



Supplement to Yanmar Kit Installation Instructions

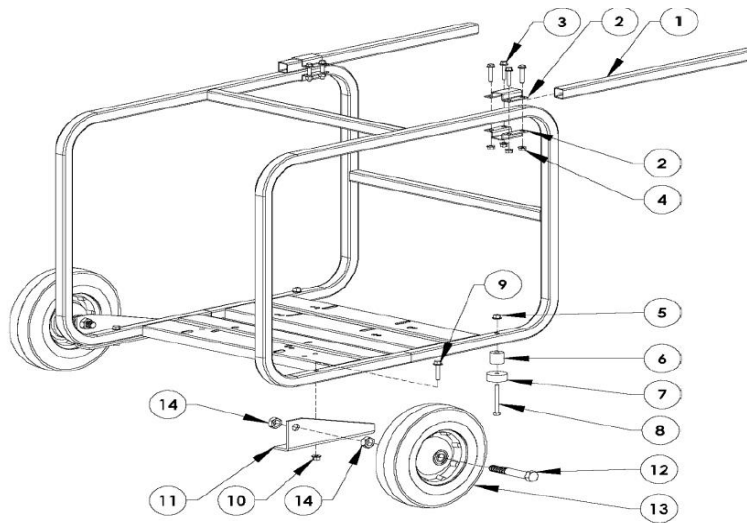
SAFETY

This product is designed and intended only for use with a YANMAR pump. All safety and warning information contained in the Yanmar Operation Manual and Service Manual is adopted and incorporated to apply to the components, accessories, and parts that are utilized with Yanmar pumps. Follow all instructions and precautions before installing this product, before operating, during operation, and during periodic maintenance procedures for your safety, the safety of others, and to protect the performance of your pump.

Kit Name: KYDPWHEEL



Item	Lev.	O	Part No.	Description	Quantity	Remarks
			YA-10048-0	Wheel Kit Assembly	1	
1			YA-10049-0	Handle	2	
	-		YA-10050-0	Clamp Kit	1	
2	--			Clamp Bracket	4	
3	--			1/4-20X1.5 Hex bolt	8	
4	--			1/4-20 Hex Flange Nut	8	
	-		YA-10051-0	Support Foot Kit	1	
5	--			5/16-18 Hex Flange Nut	2	
6	--			Rising Block	2	
7	--			Rubber Foot	2	
8	--			5/16-18X3.5 Hex Bolt	2	
	-		YA-10052-0	Axle Bracket Kit	1	
9	--			5/16-18X1.5 Hex Bolt	2	
10	--			5/16-18 Hex Flange Nut	2	
11	--			Axle Bracket (Right/Left)	2	
12	--			5/8-11X4 Hex Bolt	2	
13	--			10" Diameter Wheel	2	
14	--			5/8-11 Hex Jam Nut	4	



MODELS

- YDP20TN-E4
- YDP20TN-4
- YDP30TN-E4
- YDP30TN-4
- YDP30TNHD-E4
- YDP40TN-E4
- YDP20TW-E4
- YDP20TW-4
- YDP30TW-E4
- YDP30TW-4
- YDP30TWHD-E4
- YDP40TW-E4

Notes: Parts code is not assigned to non-servicable component parts.



Installation Instructions

Hand tighten all bolts and nuts until assembly is completed, then torque according to specifications in Table 1. The numbers in () represent the item numbers.

1. Elevate frame mounted pump to allow clearance for wheel assembly.
2. Remove rubber feet from frame rails ,if already equipped.
3. Position Axle bracket left hand (11) under frame rail towards pump end. Align hole in axle bracket closest to axle hole with rubber foot mount hole in frame rail.
4. Install one 5/16-18x1-1/2 hex bolt (9) through hole, secure with a 5/16- 18 hex nut (10).
- 5 Repeat assembly procedure steps 1-4 installing Axle bracket right hand on opposite side frame rail.
- 6 Insert a 5/8-11x4 hex bolt (12) thru hub of 10" Wheel (13)
*NOTE: Orient wheel correctly, one side of wheel hub extends past the "tire" face, this side of hub must be positioned in towards axle bracket. Head of bolt must be on the opposite short side of wheel hub.
- 7 Install a 5/8-11 hex jam nut (Ref. No. 14) on exposed thread of hex bolt. Tighten jam nut finger tight against wheel bearing.
- 8 Insert exposed threaded portion of bolt through hole in previously installed axle bracket (11).
- 9 Install a 5/8-11 hex jam nut (14) onto bolt. Finger tighten nut against axle bracket.
- 10 Hold 5/8-11 bolt head with wrench. Tighten jam nut from step 9 with second wrench to torque value shown in table. Check to make sure wheel still rotates freely, and adjust torque as necessary.
- 11 Repeat steps 6-9 to install wheel on opposite side of pump assembly
- 12 Install one Rubber feet (7) and rising block (5) on a 5/16-18x3.5" bolt (8).
- 13 Insert assembly from step 12 through hole in frame rail from the bottom up.
- 14 Fasten bolt in position with a 5/16-18 hex flange nut (5)
- 15 Repeat steps 12-14 to install riser blocks on other side
- 16 Locate Handle (Ref. No. 1) against top of frame rail (opposite end from wheel). End of handle should extend approximately 12" from vertical frame end.
- 17 Assemble two Handle Clamps (2) around handle and roll frame. Fasten with four 1/4-20x1-1/2 hex bolts (3) and four 1/4-20 hex flange nuts (4)
- 18 Position handle clamps approximately 1/2"-1" from end of handle close to bend. Torque to the values shown in table
- 19 Repeat Steps 16-18 on opposite frame rail

NOTE: Comply with torque standards in the table to avoid unexpected damage during installation or in the future.

Table 1: Standard Nut and Bolt Tightening Torque

Bolt Size	Kgf-m	Foot-lbf	N-m
1/4-20	0.87-1.0	6.3~7.3	8.5~9.9
5/16-18	2.1~2.5	15~18	20.3~24.4