



Supplement to Yanmar Kit Installation Instructions

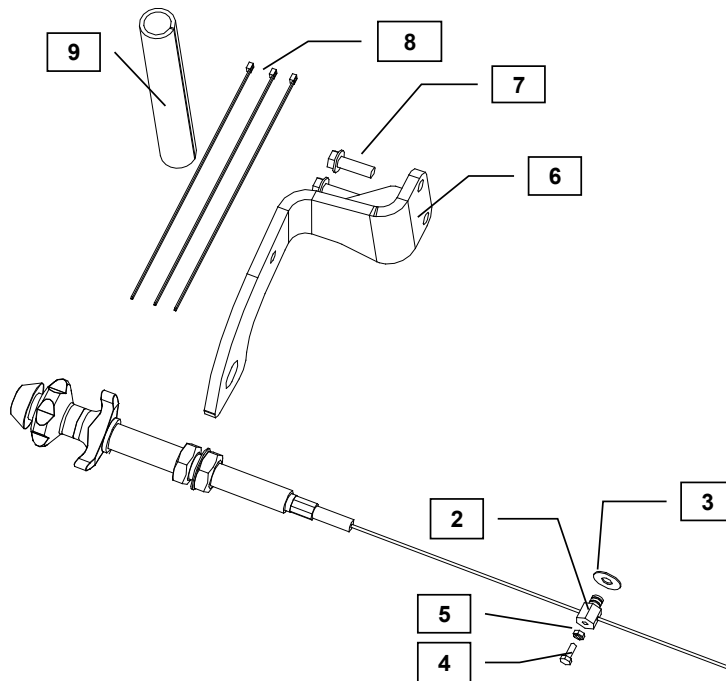
SAFETY

This product is designed and intended only for use with a YANMAR engine. All safety and warning information contained in the Yanmar Operation Manual and Service Manual is adopted and incorporated to apply to the components, accessories, and parts that are utilized with Yanmar engines. Follow all instructions and precautions before installing this product, before operating, during operation, and during periodic maintenance procedures for your safety, the safety of others, and to protect the performance of your engine.

Kit Name: KSC2



Item	Part No.	Description	Quantity	Remarks
1	129087-66061*	Cable, Throttle (Vernier)	1	
2	124756-67510*	Retainer, Throttle Cable	1	
3	22272-000070*	E-clip	1	
4	26116-040128*	Bolt, M4x0.7-12	1	
5	26716-040002*	Nut, M4x0.7	1	
6	119749-91010*	Bracket, Throttle Cable	1	
7	26106-080252*	Bolt, M8x1.25-25 (Flanged Hex Head)	2	
8	119749-91020*	Tie, Cable	3	
9	119749-91030*	Loom, Fuel Line	1	



MODELS

2TNV70 3TNV70
3TNV76

Note: Service parts are denoted by an asterisk. To replace non-service parts, the entire kit will need to be purchased.



Installation Instructions

Hand tighten all bolts and nuts until assembly is completed, then torque according to specifications in Table 1.

The numbers in () below reference the item numbers on page 1.

1. Remove two bolts from the lifitng eye assembly on flywheel housing side. Place the Throttle Cable Bracket (2) on lifitng eye and tighten them to the same location with 2 - M8x1.25-25 bolts (1).
2. Remove the nut, washer, and fitting from the end of the Speed Control Assembly (8) and insert the Speed Control Assembly through the hole in the Throttle Cable Bracket (2). Reinstall the washer and nut.
3. Remove the wire from the conduit and cut the conduit to the length per the table above and reinstall the wire in the conduit.
4. Insert the speed control Assembly wire in the Retainer (7), reinstall the fitting that was removed at Step 2, and make sure the speed control knob is all the way down.
5. Insert the Retainer (7) to lower hole of the throttle control lever and insert the #-Clip (3) into the groove closer to the Retainer body. Tighten M4x0.7-12 (4) and M4x0.7 Nut (5) enough to secure the Throttle Cable without breaking the Bolt. After tightening, make sure the Throttle Control lever is up against the idle stop adjustment screw.
6. The wire should extend at least 10 mm (0.4 inches) past the wire retainer. Cut off the excess wire.
7. Tighten all nuts and bolts per tightening torque stated in Table 1.
8. Wrap fuel line from the fuel filter to FIE with plastic loom, cut off excess, tie both its ends with cable ties, and secure it to the hole on the bracket with the cable tie.

NOTE: Comply with torque standards in the table to avoid unexpected damage during installation or in the future.

Table 1: Tightening Torque

Diameter x Pitch	Kgf-m	Foot-lbf	N-m
M8 x 1.25	1.5 ~ 2.9	10.6 ~ 20.9	14.4 ~ 28.3
M10 x 1.50	4.5 ~ 5.5	32.5 ~ 39.8	44.0 ~ 54.0
M12 x 1.75	8.0 ~ 10.0	57.8 ~ 72.3	78.4 ~ 98.0