



Supplement to Yanmar Kit Installation Instructions

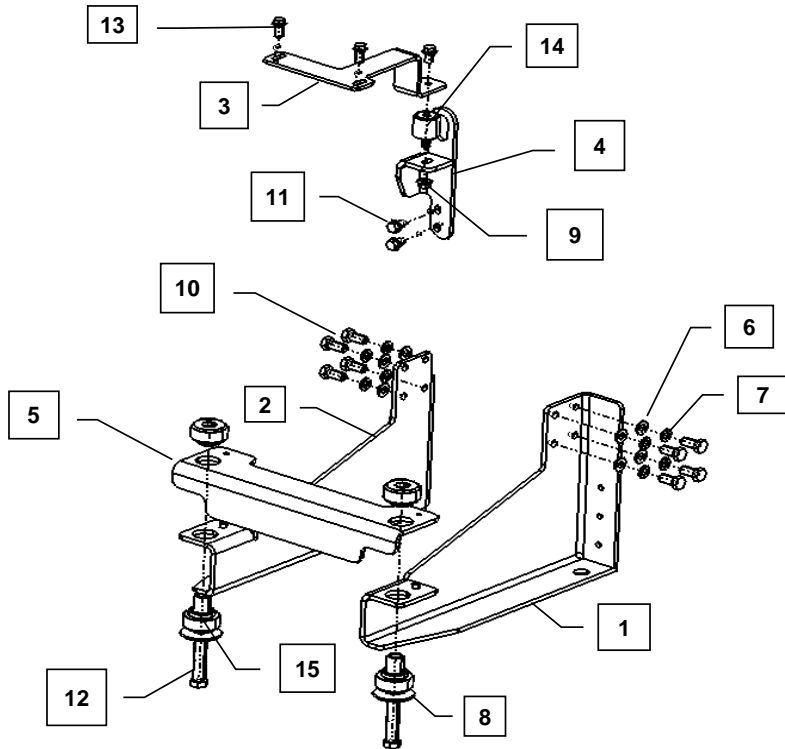
SAFETY

This product is designed and intended only for use with a YANMAR engine. All safety and warning information contained in the Yanmar Operation Manual and Service Manual is adopted and incorporated to apply to the components, accessories, and parts that are utilized with Yanmar engines. Follow all instructions and precautions before installing this product, before operating, during operation, and during periodic maintenance procedures for your safety, the safety of others, and to protect the performance of your engine.



YANMAR CO., LTD.
YANMAR AMERICA CORP.

Item	Lev.	O	Part No.	Description	Quantity	Remarks
1	-		129689-44080	Leg, Right Front	1	
2	-		129689-44090	Leg, left Front	1	
3	-		129C90-44100	Support, Top	1	
4	-		129689-44941	Mount, Upper	1	
5	-		129689-44930	Bracket, Assy, Cross	1	
6	-		129689-44310	Type A Plain Washer, M10 DIN 125	8	
7	-		129689-44320	Helical Spring Lock Washer, M10	8	
8	-		129689-44860	Large OD Plain Washer, 0.500 x 2.00 x 0.125	2	
9	-		129689-44280	Hex Serrated Flange Nut, M8-1.25	1	
10	-		129689-44330	Hex Cap Screw, M10-1.5 x 25	8	
11	-		129689-44290	Hex Serrated Flange Screw, M8-1.25 x 16	3	
12	-		129689-44960	Hex Cap Screw, 1/2-13 x 2.5	2	
13	-		26106-080202	Hex Serrated Flange Screw, M8-1.25 x 20	2	
14	-		129689-44880	Isolator, 32 x 32, M8-1.25	1	
15	-		129689-44890	Isolator, 46.4mm,51.21mm, 1/2-13	2	



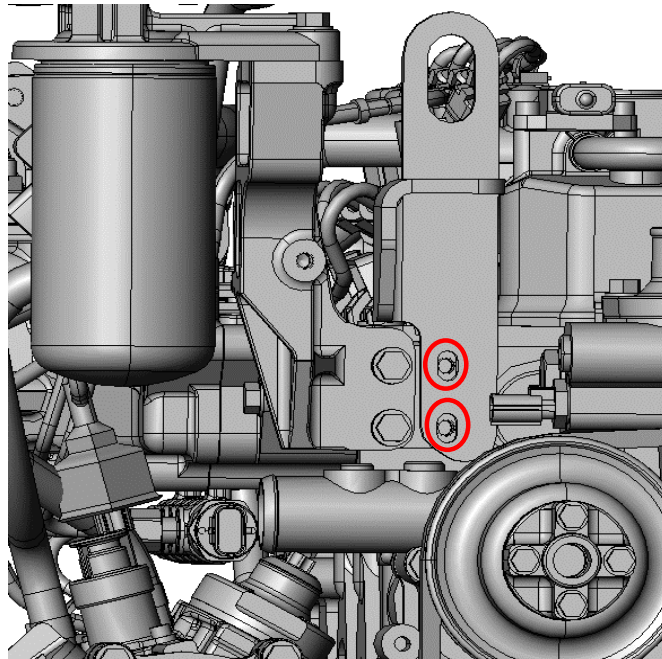
MODELS
4TNV88D-XMYAM

Remarks:

Installation Instructions

Hand tighten all bolts and nuts until assembly is completed, then torque according to specifications in Table 1. The numbers in () represent the item numbers.

1. Using M8 X 1.25 -25mm bolts (13), fasten the Upper Mount (4) to the front of the cylinder head, next to the fuel filter bracket of the engine.
2. Fasten M8 Isolator (14) and Upper Support (3) to Upper Mount (4) using M8 X 1.25 - 16mm bolt (11) and M8 X 1.25 nut (9).
3. Assemble Right Front Leg (1) and Left Front Leg (2) to engine mounting pads using Washers (6), Lock Washers (7) and M10 X 1.5 - 25mm bolts (10) provided in the kit.
4. Locate Assy Cross Bracket (5) onto Front Legs using guide pins. Assemble Isolators (15) in large openings at the sides of the Cross Bracket.
5. Install the Radiator Kit and refer to Radiator Kit instructions to complete assembly.



NOTE: Comply with torque standards in the table to avoid unexpected damage during installation or in the future.

TABLE 1: Tightening Torque

Diameter x Pitch	Kgf-m	Foot-lbf	N-m
M8 x 1.25	1.5 ~ 2.9	10.6 ~ 20.9	14.4 ~ 28.3
M10 x 1.50	4.5 ~ 5.5	32.5 ~ 39.8	44.0 ~ 54.0
M12 x 1.75	8.0 ~ 10.0	57.8 ~ 72.3	78.4 ~ 98.0