



Supplement to Yanmar Kit Installation Instructions

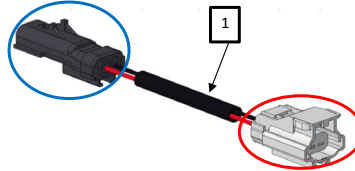
SAFETY

This product is designed and intended only for use with a YANMAR engine. All safety and warning information contained in the Yanmar Operation Manual and Service Manual is adopted and incorporated to apply to the components, accessories, and parts that are utilized with Yanmar engines. Follow all instructions and precautions before installing this product, before operating, during operation, and during periodic maintenance procedures for your safety, the safety of others, and to protect the performance of your engine.

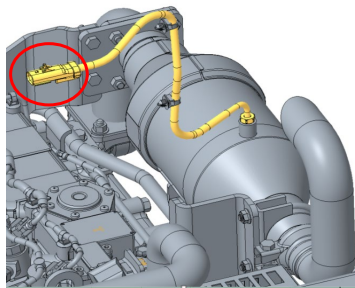


Item	Part No.	Description	Quantity	Remarks
1	129C90-91010*	HARNES, TEMP ADAPT	1	
2	129C90-91100*	CAP, VINYL 23.8MM	1	
3	129C90-91110*	CAP, VINYL 28.6MM	1	
4	129C90-91120*	CAP, THROTTLE CONN	1	

Note: Service parts are denoted by an asterisk. To replace non-service parts, the entire kit will need to be purchased.



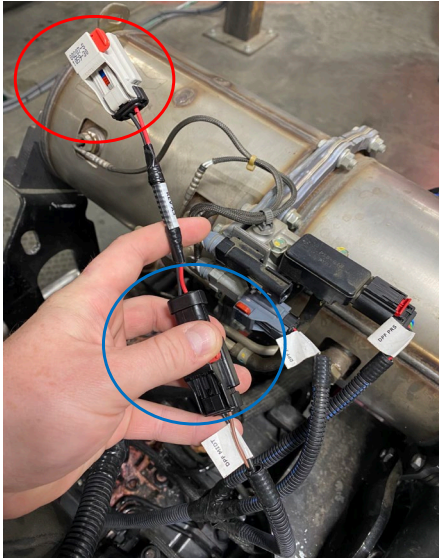
Picture 1. DOC Temperature Jumper Harness



Picture 2. DOC Temperature Connector



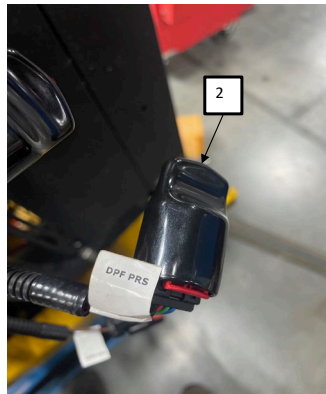
1. Connect the KPH23 jumper harness (Picture 1) connector circled in red to the DOC temperature connector (Picture 2) circled in red. Ensure the connector securely clicks into place.
2. Connect the KPH23 jumper harness (Picture 1) connector circled in blue to the KPH9 harness connector labeled "DPF Mid-Temp" Connector (Picture 3) circled in blue. Ensure the connector securely clicks into place.



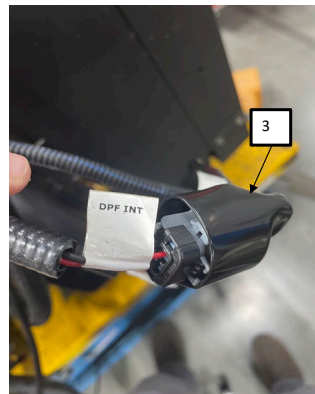
Picture 3. KPH9 "Mid Temp" Connector of KPH9 Connecting to KPH23



3. Use the 23.8mm diameter cap (2) and fully cover the DPF PRS connector shown in Picture 4 below. Ensure the connector is routed and secured upwards to prevent water collecting in the cap.
4. Use the 28.6mm diameter cap (3) and fully cover the DPF INT connector shown in Picture 5 below. Ensure the connector is routed and secured upwards to prevent water collecting in the cap.



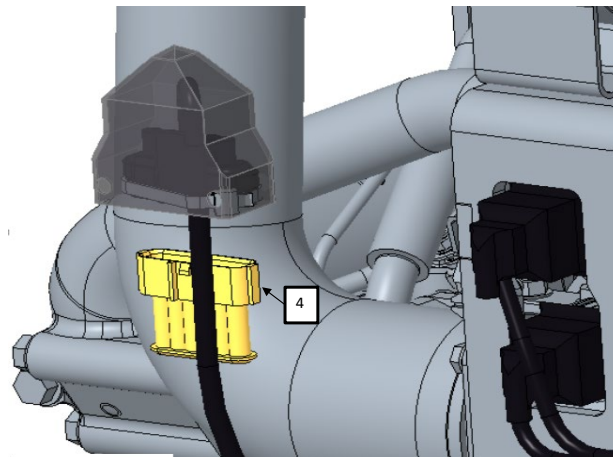
Picture 4. KPH9 DPF PRS Connector Capped



Picture 5. KPH9 DPF INT Connector Capped



5. Connect the intake throttle cap (4) into the intake throttle connector as shown in picture 6 below. Ensure the connector securely clicks into place.



Picture 6. KPH9 Intake Throttle Connector