



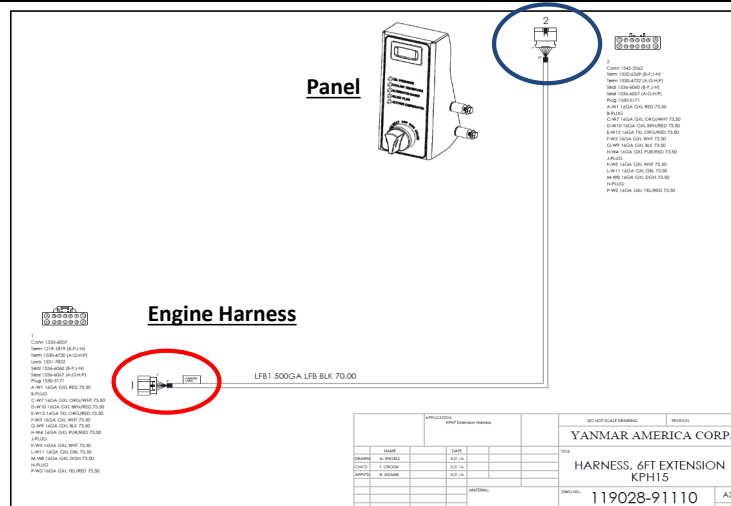
Supplement to Yanmar Kit Installation Instructions

SAFETY

This product is designed and intended only for use with a YANMAR engine. All safety and warning information contained in the Yanmar Operation Manual and Service Manual is adopted and incorporated to apply to the components, accessories, and parts that are utilized with Yanmar engines. Follow all instructions and precautions before installing this product, before operating, during operation, and during periodic maintenance procedures for your safety, the safety of others, and to protect the performance of your engine.



Item	Part No.	Description	Quantity	Remarks
1	119028-91110	Harness, 6FT Extension	1	



Picture 1. Extension Harness

Note: Insert Connector 1 (Picture 1 - Red) into the panel connector on the KPH7 engine harness. Insert Connector 2 (Picture 1 - Blue) into the connector off of the KP7 panel.



Installation Instructions

1. Connect harness terminals to appropriate locations. See engine wiring harness drawing above.
2. After connecting all terminals to appropriate locations, check the following:
 - a) Make sure the wires do not contact the exhaust manifold or muffler.
 - b) Make sure the wires do not contact any sharp or abrasive surfaces.
 - c) Use wire ties to secure the wire harness to the engine.

WARNING: Be sure battery cables are connected correctly before operation. If at any time during operation, the battery cables are removed, the harness could fail prematurely.