



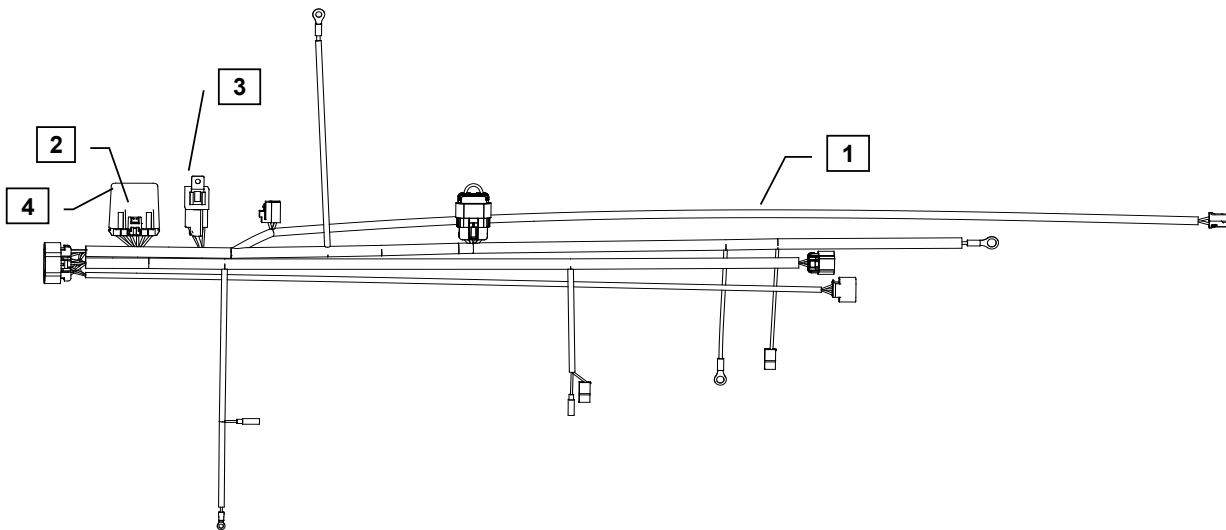
Supplement to Yanmar Kit Installation Instructions

SAFETY

This product is designed and intended only for use with a YANMAR engine. All safety and warning information contained in the Yanmar Operation Manual and Service Manual is adopted and incorporated to apply to the components, accessories, and parts that are utilized with Yanmar engines. Follow all instructions and precautions before installing this product, before operating, during operation, and during periodic maintenance procedures for your safety, the safety of others, and to protect the performance of your engine.



Item	Part No.	Description	Quantity	Remarks
1	129687-91100*	Wiring Harness (DI)3	1	(A)
2	119749-91420*	Control Module Timer	1	
3	119749-91460*	Relay 70A 12V Sealed	1	
4	119749-91440*	Control Module Housing	1	
5	1908-00*	Switch Retainer	2	
6	119749-91500*	60" Harness Extension	1	(B)



TIER 2 MODELS

- 3TNV82A
- 3TNV88
- 3TNV84T
- 4TNV88
- 4TNV84T
- 4TNV98
- 4TNV98T

TIER 3 MODELS

- 3TNV82A-GGE
- 3TNV84T
- 4TNV84T-BGGE

Remarks: (A) When utilizing the Yanmar harness to a control panel that has 10 ft. or more of wiring between them, you must install a relay, 119749-91400.
 (B) 119749-91500 is an extension used to connect harness, 129687-91100, to customer specified control panel.

Note: Service parts are denoted by an asterisk. To replace non-service parts, the entire kit will need to be purchased.



Installation Instructions

Hand tighten all bolts and nuts until assembly is completed, then torque according to specifications in Table 1. The numbers in () represent the item numbers.

1. Connect harness terminals to appropriate locations. See engine wiring harness diagram and schematics provided with panel kit.

NOTE: The spare ring terminal in the kit is for the S-Terminal on the Denso starter. The spade connector, for the Hitachi starter, will have to be replaced with the ring terminal if Denso Starter is equipped.

2. Use the Switch Retainer (5) to mount the Relay (3) to an open thread bore on the cylinder head.
3. After connecting all terminals to appropriate locations, check the following:
 - a) Make sure the wires do not contact the exhaust manifold or muffler.
 - b) Make sure the wires do not contact any sharp or abrasive surfaces.
 - c) Use wire ties to secure the wire harness to the engine.
 - d) Cover all harness terminals not used after assembly is completed

WARNING: Be sure battery cables are connected correctly before operation. If at any time during operation, the battery cables are removed, the harness could fail prematurely.

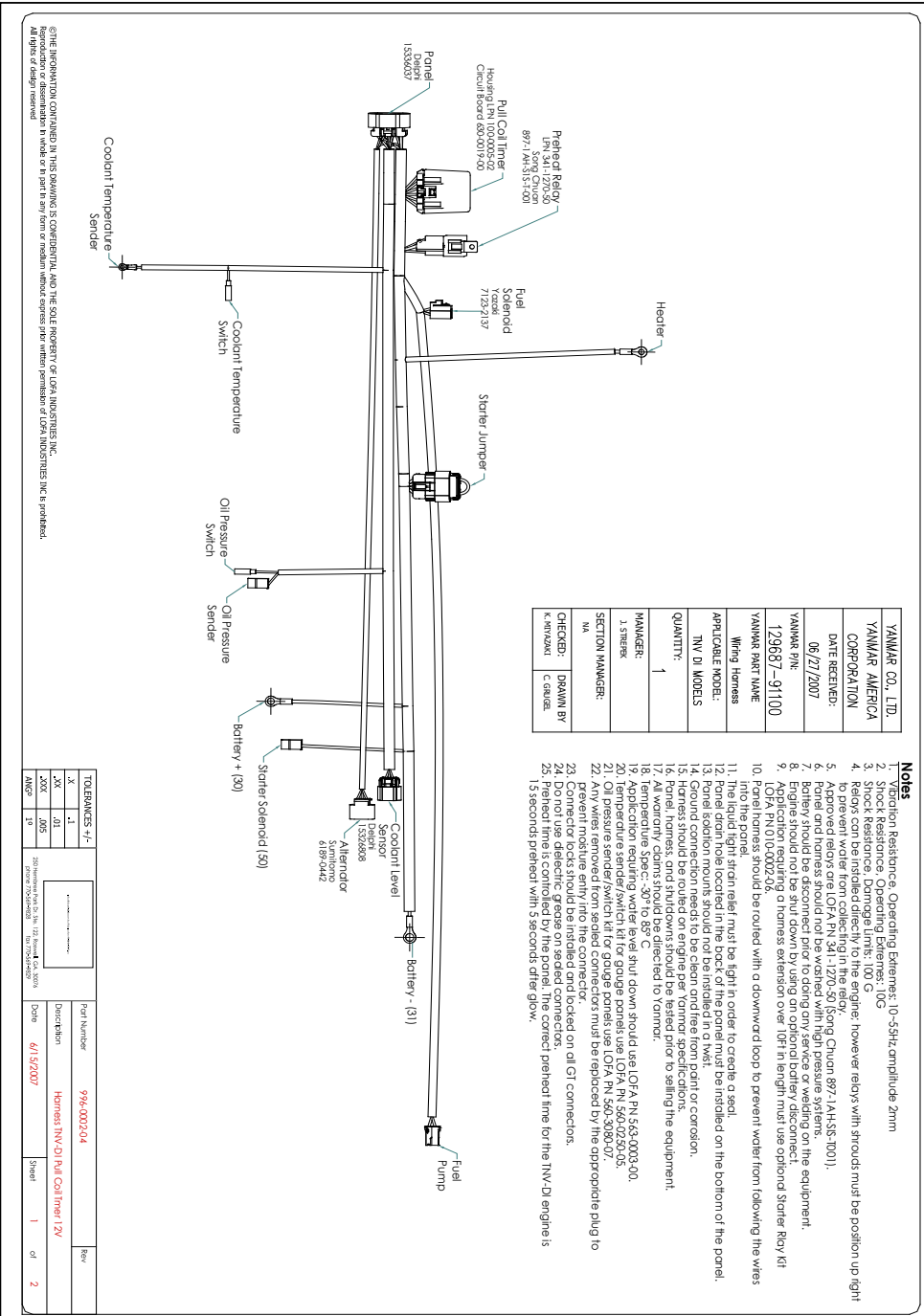
NOTE: Application requiring a harness extension to a control panel over 10Ft in length must use the starter relay at the connector labeled Starter Jumper, 119749-91400.

Refer to harness drawing for additional design requirements for consideration of application. A troubleshooting guide is available through Yanmar's Distributor Website or by contacting Yanmar America's Service Department.

NOTE: Comply with torque standards in the table to avoid unexpected damage during installation or in the future.

Diameter x Pitch	Kgf-m	Foot-lbf	N-m
M8 x 1.25	1.5 ~ 2.9	10.6 ~ 20.9	14.4 ~ 28.3
M10 x 1.50	4.5 ~ 5.5	32.5 ~ 39.8	44.0 ~ 54.0
M12 x 1.75	8.0 ~ 10.0	57.8 ~ 72.3	78.4 ~ 98.0

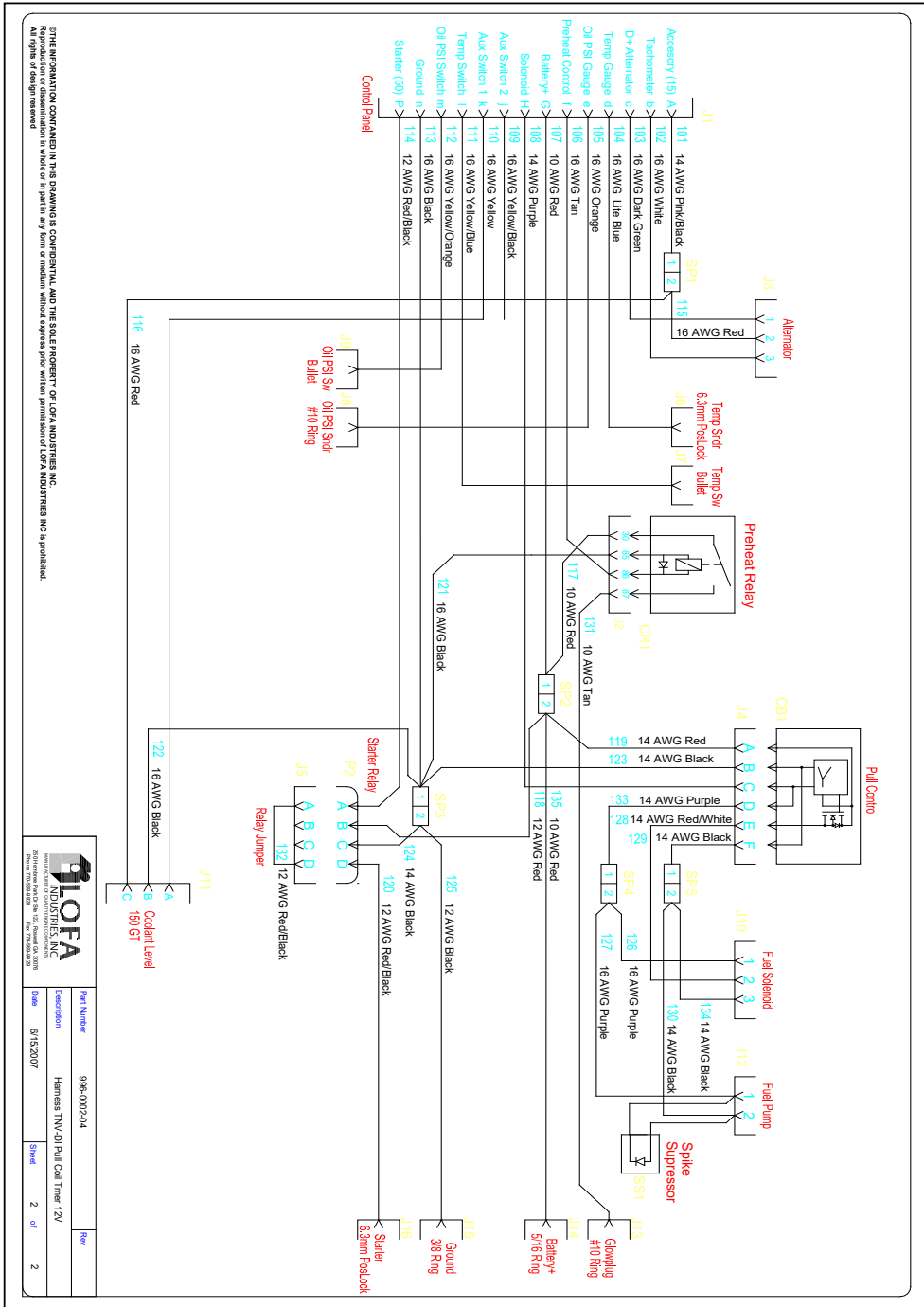
Installation Instructions



©THE INFORMATION CONTAINED IN THIS DRAWING IS CONFIDENTIAL AND THE SOLE PROPERTY OF LOFA INDUSTRIES, INC. ALL RIGHTS OF DESIGN RESERVED. No part of this drawing or any information disclosed herein may be reproduced or transmitted in any form or by any means electronic, mechanical, photocopying, recording, or by any information storage and retrieval system without the prior written permission of LOFA INDUSTRIES, INC. or its affiliates.



Installation Instructions



OTHER INFORMATION CONTAINED IN THIS DRAWING IS CONFIDENTIAL AND THE SOLE PROPERTY OF LCPA INDUSTRIES, INC.
 Reproduction or dissemination in whole or in part in any form or medium without express prior written permission of LCPA INDUSTRIES, INC. is prohibited.
 All rights of design reserved.

Part Number	998-0002304
Description	Harness TN-V-D Pull Control 12V
Size	01/02/07
Sheet	2 of 2
Rev	2