



## Supplement to Yanmar Kit Installation Instructions

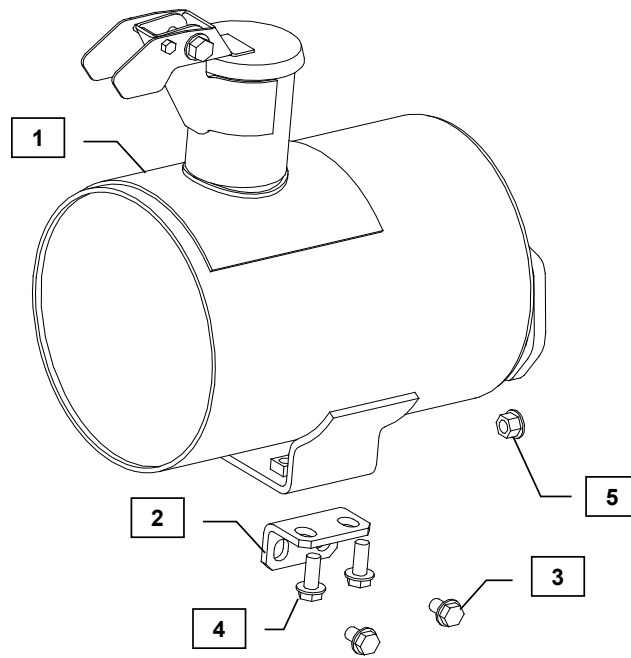
# SAFETY

---

This product is designed and intended only for use with a YANMAR engine. All safety and warning information contained in the Yanmar Operation Manual and Service Manual is adopted and incorporated to apply to the components, accessories, and parts that are utilized with Yanmar engines. Follow all instructions and precautions before installing this product, before operating, during operation, and during periodic maintenance procedures for your safety, the safety of others, and to protect the performance of your engine.



Item	Lev.	O	Part No.	Description	Quantity	Remarks
1 to 5	-		729689-13130	Muffler Kit	1	
1	--		129508-13520*	Muffler Assy	1	
2	--		129403-13540*	Support bracket, muffler	1	
3	--		26106-080122*	flange bolt, M8x12	2	
4	--		26106-080202*	flange bolt, M8x20	2	
5	--		26306-080002*	flange nut ( U B S M 8 )	5	



**MODELS**  
4TNV84T-GGE  
4TNV84T-DSA

Note: Service parts are denoted by an asterisk. To replace non-service parts, the entire kit will need to be purchased.

Remarks:



## Installation Instructions

**WARNING: DO NOT INSTALL THE KIT WHILE THE ENGINE IS STILL HOT.**

Hand tighten all bolts and nuts until assembly is completed, then torque according to specifications in Table 1. The numbers in ( ) represent the item numbers.

1. Insert the exhaust gasket, included with the engine, on turbocharger outlet stud bolts.
2. Fasten the Muffler (1) to the turbocharger outlet using M8 Flange Nuts (5).
3. Fasten the longer side of the Muffler Bracket (2) to the exhaust manifold with M8 x 12 bolts (3). Then mount the Muffler (1) to the Muffler Bracket using M8 x 20 bolts (4).
4. Readjust Muffler to avoid any tension put on the turbocharger before tightening fasteners.

NOTE: Comply with torque standards in the table to avoid unexpected damage during installation or in the future.

Diameter x Pitch	Kgf-m	Foot-lbf	N-m
M8 x 1.25	1.5 ~ 2.9	10.6 ~ 20.9	14.4 ~ 28.3
M10 x 1.50	4.5 ~ 5.5	32.5 ~ 39.8	44.0 ~ 54.0
M12 x 1.75	8.0 ~ 10.0	57.8 ~ 72.3	78.4 ~ 98.0