



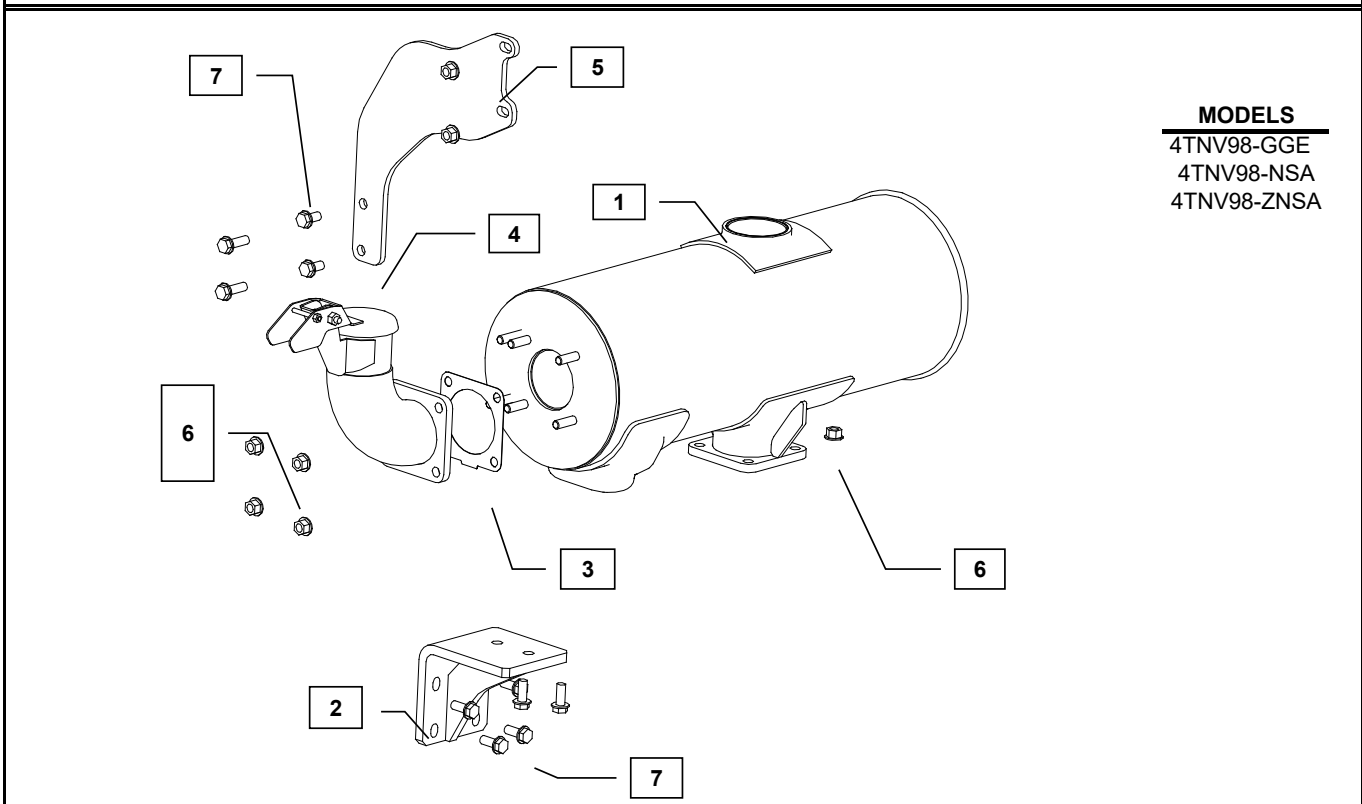
Supplement to Yanmar Kit Installation Instructions

SAFETY

This product is designed and intended only for use with a YANMAR engine. All safety and warning information contained in the Yanmar Operation Manual and Service Manual is adopted and incorporated to apply to the components, accessories, and parts that are utilized with Yanmar engines. Follow all instructions and precautions before installing this product, before operating, during operation, and during periodic maintenance procedures for your safety, the safety of others, and to protect the performance of your engine.



Item	Part No.	Description	Quantity	Remarks
	729989-13100	Muffler Kit	1	
1	129944-13520*	Muffler Kit	1	
2	129944-13660*	Stay, muffler	1	
3	129930-13201*	Gasket, Muffler	1	
4	123925-13600*	Pipe Assy, Tail	1	
5	129989-13660*	Bracket, muffler	1	
6	26306-080002*	Nut, M8x1.25 (Flanged hex head)	10	
7	26106-080202*	Bolt, M8x1.25 - 20 (Flanged hex head)	8	



MODELS
 4TNV98-GGE
 4TNV98-NSA
 4TNV98-ZNSA

Note: Service parts are denoted by an asterisk. To replace non-service parts, the entire kit will need to be purchased.

Remarks:

**KM4 - MUFFLER KIT
 INS-KM4-0013**

PAGE 1 OF 2



Installation Instructions

WARNING: DO NOT INSTALL THE KIT WHILE THE ENGINE IS STILL HOT

Hand tighten all bolts and nuts until the assembly is completed, then torque to the specifications in Table 1 below.

1. Place the exhaust gasket included with the engine on the exhaust manifold flange studs.
2. Mount the Muffler (1) on the exhaust manifold flange studs so that the outlet faces the radiator, secure using the M8x1.25 flange nuts (6).

NOTE: For Step 3, if the Yanmar radiator kit is already installed on the engine it will be necessary to remove the upper mounting bracket from the cylinder head to install the Muffler Bracket (5) for the Muffler.

3. Fasten the Muffler Bracket (5) and the upper radiator mount to the cylinder head using the provided M8x1.25 - 20 bolts (7).
4. Mount the Bracket Stay (2) to the cylinder head and Muffler (1) using the M8x1.25 - 20 bolts (7).
5. Place Muffler Gasket (3) on the studs of the Muffler outlet.
6. Mount the Elbow Pipe (4) to the studs on the Muffler outlet and fasten with M8x1.25 flange nuts (6)
7. Torque all bolts to proper torque specifications.

Table 1: Proper torque specifications for bolts and nuts.

Diameter x Pitch	Kgf-m	Foot-lbf	N-m
M8 x 1.25	1.5 ~ 2.9	10.6 ~ 20.9	14.4 ~ 28.3
M10 x 1.50	4.5 ~ 5.5	32.5 ~ 39.8	44.0 ~ 54.0
M12 x 1.75	8.0 ~ 10.0	57.8 ~ 72.3	78.4 ~ 98.0