



Supplement to Yanmar Kit Installation Instructions

SAFETY

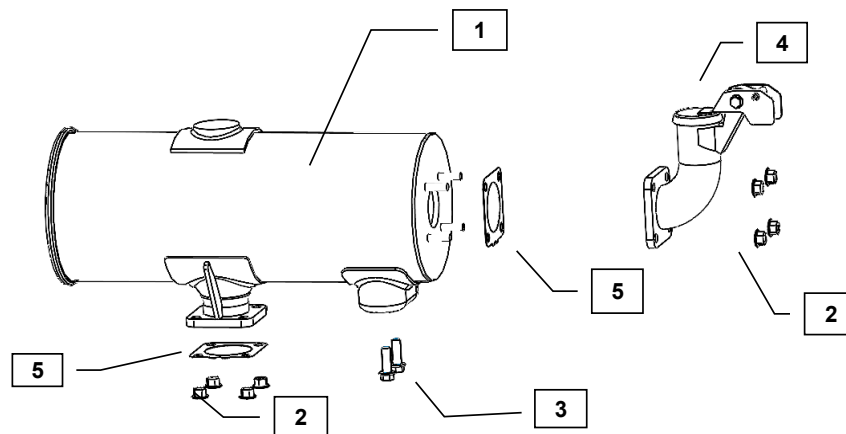
This product is designed and intended only for use with a YANMAR engine. All safety and warning information contained in the Yanmar Operation Manual and Service Manual is adopted and incorporated to apply to the components, accessories, and parts that are utilized with Yanmar engines. Follow all instructions and precautions before installing this product, before operating, during operation, and during periodic maintenance procedures for your safety, the safety of others, and to protect the performance of your engine.



Item	Part No.	Description	Quantity	Remarks
	KM2J	Muffler Kit	1	
1	129004-13500*	Muffler	1	
2	26306-080002*	Nut, M8 x 1.25 (Flanged hex head)	8	
3	26106-080252*	Bolt, M8 x 1.25 - 25 (Flanged hex head)	2	
4	129005-13600*	Tail pipe elbow with flapper	1	
5	129004-13200*	Muffler Gasket	2	

MODELS

3TNV82A
3TNV88



Note: Service parts are denoted by an asterisk. To replace non-service parts, the entire kit will need to be purchased.

Remarks: This is not a direct replacement for the KM2 muffler. Exhaust back pressure will need to be verified with this muffler to ensure compliance if replacing a KM2



Installation Instructions

WARNING: DO NOT INSTALL THE KIT WHILE THE ENGINE IS STILL HOT

Hand tighten all bolts and nuts until the assembly is completed, then torque to the specifications in Table 1 below.

1. Place the exhaust gasket (5) on the exhaust manifold flange studs.
2. Mount the muffler (1) on the exhaust manifold flange studs, secure using the M8x1.25 flange nuts (2).
3. Install the exhaust gasket (5) and tailpipe elbow (4) onto the muffler outlet and secure with M8X1.25 nuts(2)
4. Install the M8X1.25-25 bolts through the manifold mounting points into the muffler

Table 1: Proper torque specifications for bolts and nuts.

Diameter x Pitch	Kgf-m	Foot-lbf	N-m
M8 x 1.25	1.5 ~ 2.9	10.6 ~ 20.9	14.4 ~ 28.3