



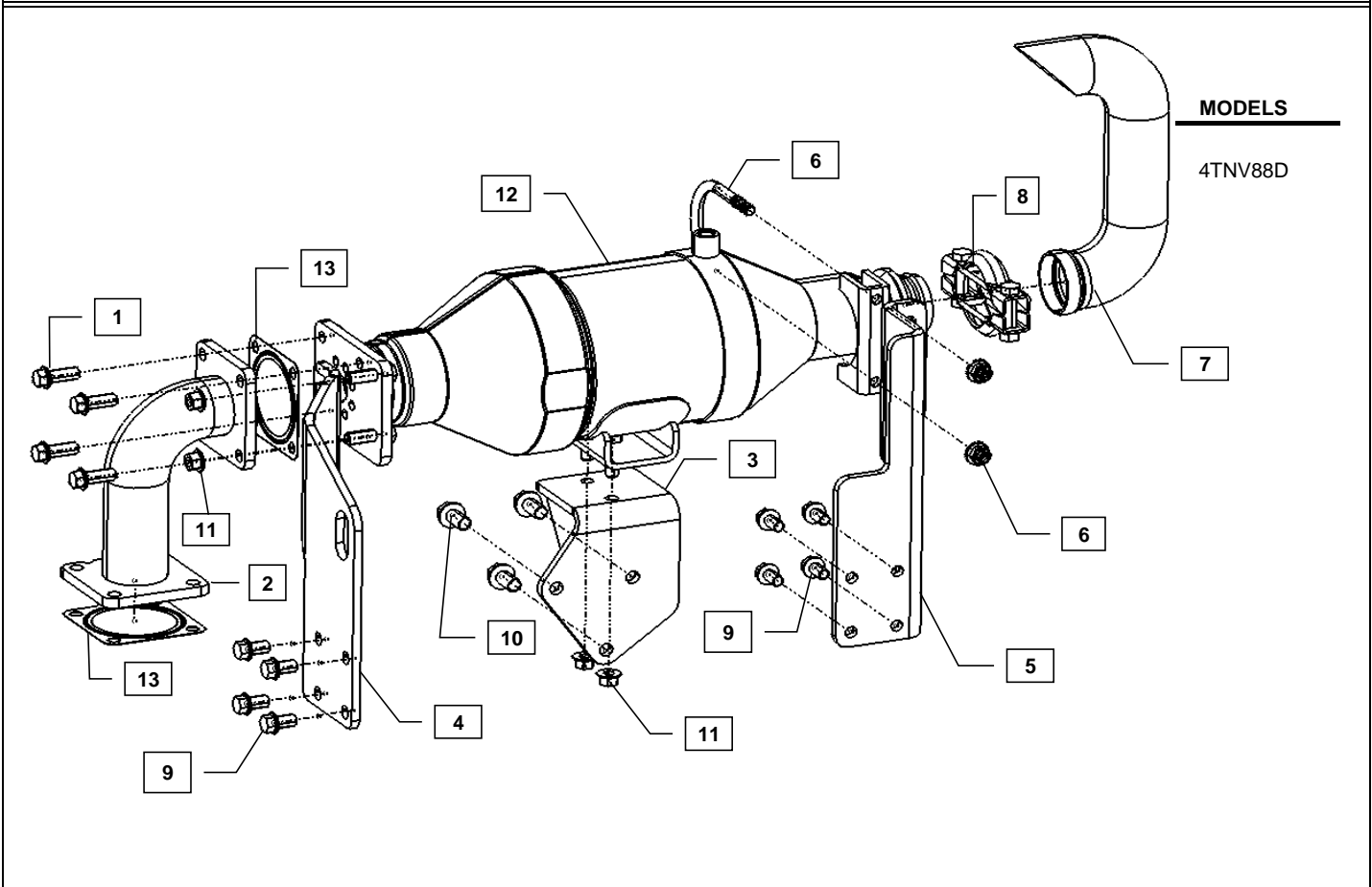
Supplement to Yanmar Kit Installation Instructions

SAFETY

This product is designed and intended only for use with a YANMAR engine. All safety and warning information contained in the Yanmar Operation Manual and Service Manual is adopted and incorporated to apply to the components, accessories, and parts that are utilized with Yanmar engines. Follow all instructions and precautions before installing this product, before operating, during operation, and during periodic maintenance procedures for your safety, the safety of others, and to protect the performance of your engine.



Item	Lev.	O	Part No.	Description	Quantity	Remarks
1	--		119802-13790	BOLT, M8X25 10.9T	4	
2	--		129C90-13370	PIPE, EXHAUST	1	
3	--		129C90-17700	BRACKET, DOC	1	
4	--		129C90-17710	BRACKET, DOC	1	
5	--		129C90-17720	BRACKET, DOC	1	
6	--		129C90-17800	U-BOLT ASSY, 57MM	1	
7	--		129C90-17900	PIPE, EXHAUST TAIL	1	
8	--		129C90-17910	CLAMP, V-TYPE 58MM	1	
9	--		26106-080162	BOLT, 8 X 16	8	
10	--		26106-100202	BOLT, 10 X 20	3	
11	--		26306-080002	NUT, 8	4	
12	--		129C28-17250	DOC	1	
13	--		129930-13201	GASKET, DOC	2	Included in loose parts box or on the engine



Note: Service parts are denoted by an asterisk. To replace non-service parts, the entire kit will need to be purchased.



Installation Instructions

Hand tighten all bolts and nuts until assembly is completed, then torque according to specifications in Table 1. The numbers in () represent the item numbers.

1. If it is possible to get to the rear engine lift eye and mount rear DOC mount bracket (4) as shown in Figure 2 & 3, then go to step 4. If it is not possible, then follow from step 2.
2. Temporarily remove EGR cooler and associated components as shown in the Figure 1 on the next page. It is necessary to retain all hose clamps and hardware to install again after assembling DOC mounting brackets. The gaskets cannot be reused and needs to be ordered - P/N: 129928-13410
3. Remove the rear engine lift eye as shown in the Figure 2 on the next page. This will not be reused.
4. Install rear DOC mount bracket (4) on cylinder head location as shown in the Figure 3 using M8X1.25 - 16mm bolts (9).
5. Install middle DOC mount bracket (3) on exhaust manifold as shown in the Figure 4 using M10X1.5 - 20mm bolts (10).
6. Install front DOC mount bracket (5) on the front cylinder head near cooling water pump as shown in the Figure 5 using M8X1.25 - 16mm bolts (9).
7. Install DOC (12) onto the middle and rear DOC brackets (3 & 4) with the bolts in the DOC using M8 Nuts (11).
8. Clamp the rear end of the DOC (12) to the front DOC mount bracket (5) using U-bolt assembly (6).
9. Reinstall the EGR cooler and associated components back to original location.
10. Install one end of the Pipe Exhaust (2) to the front end of the DOC (12) using M8X25 Bolts (1) and Gasket (13). Install the other end of the Pipe Exhaust (2) to the exhaust manifold outlet using M8 Nuts provided along with the engine and Gasket (13).

NOTE: Comply with torque standards in the table to avoid unexpected damage during installation or in the future.

Table 1: Tightening Torque

Diameter x Pitch	Kgf-m	Foot-lbf	N-m
M8 x 1.25	1.5 ~ 2.9	10.6 ~ 20.9	14.4 ~ 28.3
M10 x 1.50	4.5 ~ 5.5	32.5 ~ 39.8	44.0 ~ 54.0
Band Clamp	1.5 ~ 2.9	10.6 ~ 20.9	14.4 ~ 28.3
U-Bolt	1.8 ~ 2.2	13.3 ~ 16.2	18 ~ 22
Nut, M8 X 1.25	1.5 ~ 2.9	10.6 ~ 20.9	14.4 ~ 28.3

Installation Instructions

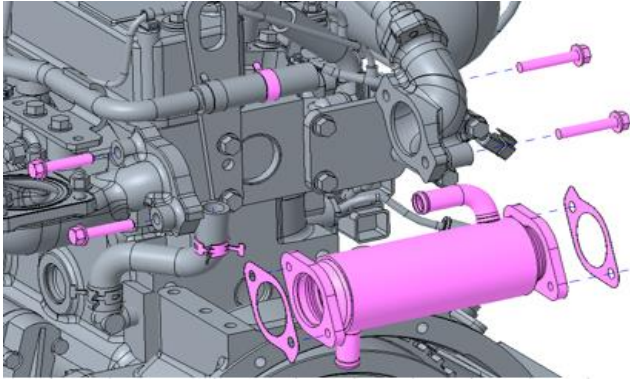


Figure 1

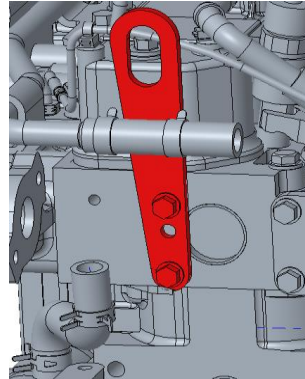


Figure 2

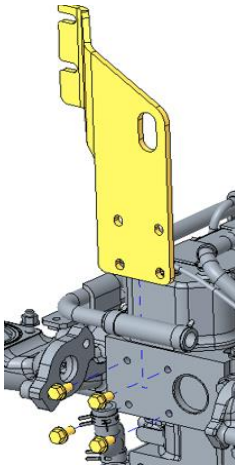


Figure 3

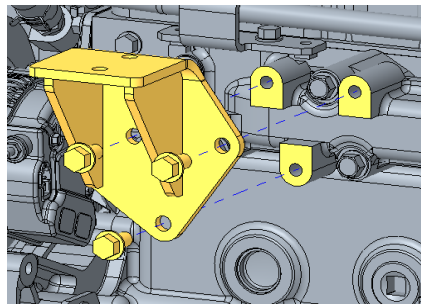


Figure 4

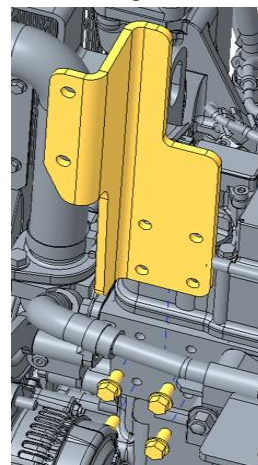


Figure 5

NOTE: Comply with torque standards in the table to avoid unexpected damage during installation or in the future.

Table 1: Tightening Torque

Diameter x Pitch	Kgf-m	Foot-lbf	N-m
M8 x 1.25	1.5 ~ 2.9	10.6 ~ 20.9	14.4 ~ 28.3
M10 x 1.50	4.5 ~ 5.5	32.5 ~ 39.8	44.0 ~ 54.0
Band Clamp	1.5 ~ 2.9	10.6 ~ 20.9	14.4 ~ 28.3
U-Bolt	1.8 ~ 2.2	13.3 ~ 16.2	18 ~ 22
Nut, M8 X 1.25	1.5 ~ 2.9	10.6 ~ 20.9	14.4 ~ 28.3