



Supplement to Yanmar Kit Installation Instructions

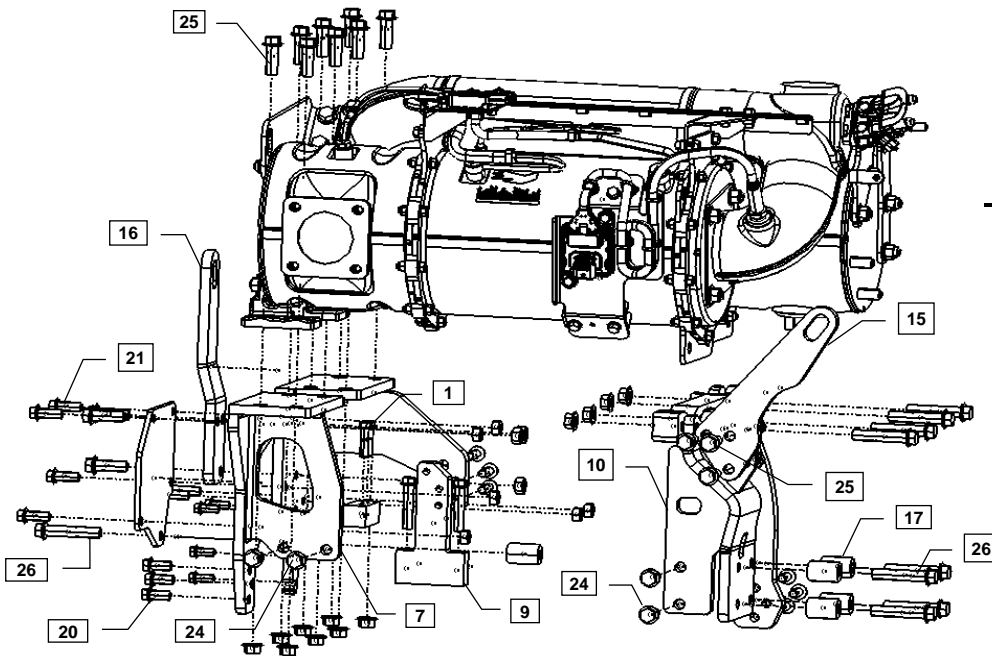
## SAFETY

---

This product is designed and intended only for use with a YANMAR engine. All safety and warning information contained in the Yanmar Operation Manual and Service Manual is adopted and incorporated to apply to the components, accessories, and parts that are utilized with Yanmar engines. Follow all instructions and precautions before installing this product, before operating, during operation, and during periodic maintenance procedures for your safety, the safety of others, and to protect the performance of your engine.



Item	Lev.	O	Part No.	Description	Quantity	Remarks
0	-		129G90-17300	MOUNT KIT, ATD	1	
1	--		129E00-13620*	BOLT, M8X40 10.9T	2	
2	--		129G90-17440*	BRACKET KIT, KATD2	1	
3	---		129G88-17460*	BRACKET, MISC.	1	
4	---		129F88-19410*	ISOLATOR	4	
5	---		129F88-19420	NUT	4	
6	--		129G90-17450*	BRACKET, DM BRACE	1	
7	--		129G90-17500*	BRACKET, ATD	1	
8	--		129G90-17510*	BRACKET, ATD	1	
9	--		129G88-17520*	BRACKET, ATD	1	
10	--		129G90-17530*	BRACKET, ATD	1	
11	--		129G90-17540*	BRACKET, ATD	1	
12	--		129G90-17550*	BRACKET, ATD	1	
13	--		129G90-17560*	BRACKET, ATD	1	
14	--		129G90-17570*	BRACKET, ATD	1	
15	--		129G88-17600*	BRACKET, ENG LIFTING	1	
16	--		129G90-17610*	BRACKET, ENG LIFTING	1	
17	--		129G88-17830*	SPACER	4	
18	--		26106-060352*	BOLT, 6 X 35	3	
19	--		26106-080222*	BOLT, 8 X 22	4	
20	--		26106-100252*	BOLT, 10 X 25	3	
21	--		26106-100302*	BOLT, 10 X 30	7	
22	--		26106-100402*	BOLT, 10 X 40	5	
23	--		26106-100602*	BOLT, 10 X 60	2	
24	--		26106-120302*	BOLT, 12 X 30	4	
25	--		26106-120402*	BOLT, 12 X 40	14	
26	--		26106-120702*	BOLT, 12 X 70	9	
27	--		26366-060002*	NUT, 6	4	
28	--		26366-120002*	NUT, 12	12	
30	-		129G88-17001*	ATD UNIT	1	



**MODELS**

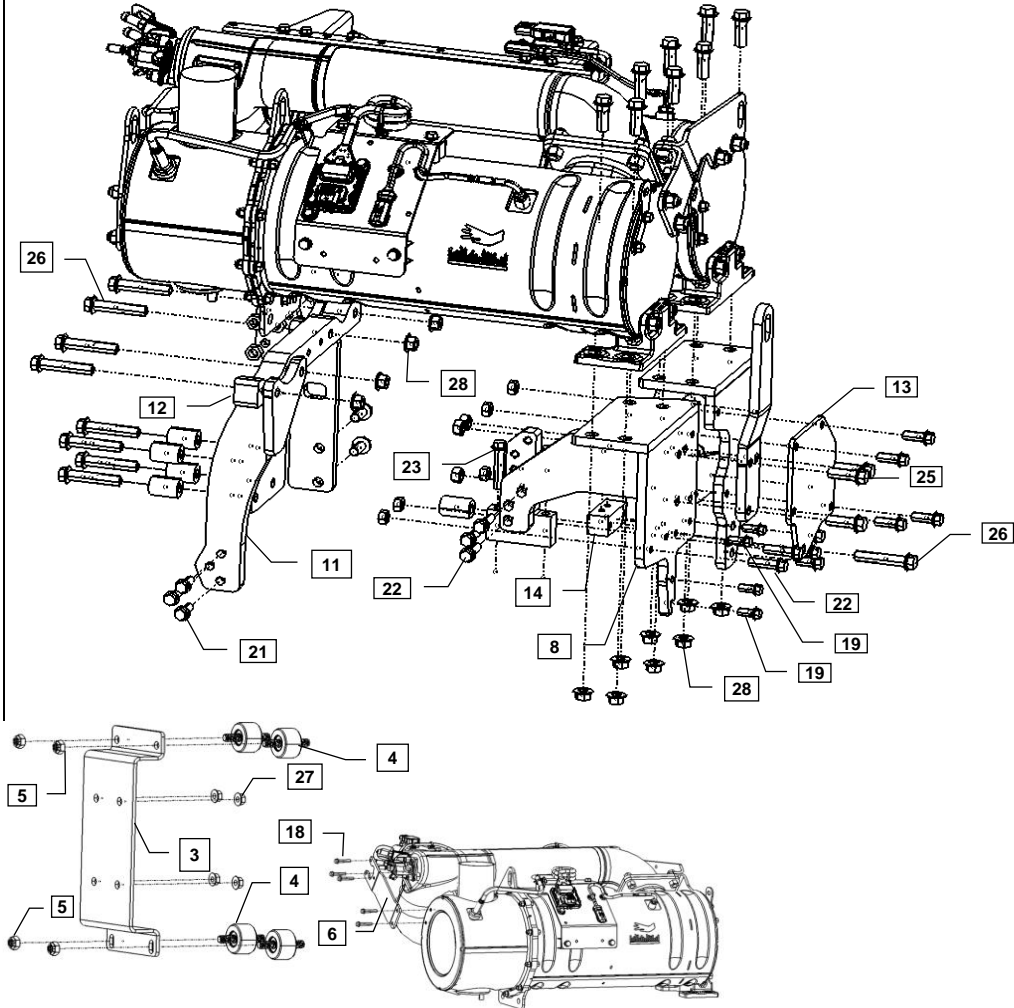
4TN107FHT

Note: Service parts are denoted by an asterisk. To replace non-service parts, the entire kit will need to be purchased.



**Installation Instructions**

Hand tighten all bolts and nuts until assembly is completed, then torque according to specifications in Table 1. The numbers in ( ) represent the item numbers.



NOTE: Comply with torque standards in the table to avoid unexpected damage during installation or in the future.

Table 1: Tightening Torque			
Diameter x Pitch	Kgf-m	Foot-lbf	N-m
M8 x 1.25	1.5 ~ 2.9	10.6 ~ 20.9	14.4 ~ 28.3
M10 x 1.50	4.5 ~ 5.5	32.5 ~ 39.8	44.0 ~ 54.0
Band Clamp	1.5 ~ 2.9	10.6 ~ 20.9	14.4 ~ 28.3
U-Bolt	1.8 ~ 2.2	13.3 ~ 16.2	18 ~ 22
Nut, M8 X 1.25	1.5 ~ 2.9	10.6 ~ 20.9	14.4 ~ 28.3



### Installation Instructions

Hand tighten all bolts and nuts until assembly is completed, then torque according to specifications in Table 1. The numbers in () represent the item numbers.

1. Remove the lift eye and associated bolts on flywheel and fan side that are supplied with the engine as shown in figure 1 on the next page.
2. Unplug exhaust temperature sensor and unbolt sensor harness mounting bracket to mount ATD mount bracket (7) as shown in figure 2. Align the ATD mount bracket (7) and assemble onto the exhaust flywheel side using M12X30 (24) and M10X25 (20) bolts as shown in the figure 3. Reinstall the bracket and reconnect the harness.
3. Install the ATD mount bracket support (9) on the intake flywheel side using M10X60 (23) bolts as shown in the figure 4.
4. Install the ATD mount bracket (14) on the flywheel side using M8X40 (1) bolts as shown in the figure 5.
5. Assemble the ATD mount bracket (8) on the intake flywheel side and to the support bracket (9) using M10X40 (22), and M8X22 (19) bolts as shown in the figure 6.
6. Install the ATD brace bracket (13) on the ATD mount bracket (8) using M10X30 (21) and M12X70 (26) bolts as shown in the figure 7.
7. Install the engine lifting eye, flywheel side (16) on the ATD mount bracket (8) using M12X40 bolts (25) as shown in the figure 8.
8. Loosely assemble the ATD mount bracket (11) near intake fan side as shown in the figure 9 using M10X25 bolts (21).
9. Loosely assemble the ATD mount bracket (10) on exhaust fan side as shown in the figure 10 using M12X30 (24), M12 spacers (17) and M12X70 bolts (26).
10. Install the engine lighting eye, fan side (15) on the ATD mount bracket (10) as shown in the figure 11 using M12X40 (25) bolts.
11. Uninstall the ATD unit (30) from the pre-installed bracket by removing the M12X30 and M12X70 bolts as shown in the figure 12.
12. Align the ATD unit (30) to assemble onto the front and rear ATD mounting brackets using sliding ATD mounting bracket, fan side brace (12). Slide the ATD mount bracket (12) after the ATD unit is lined up such that the bracket aligns with the holes to fit onto the ATD unit as shown in the figure 13.
13. After alignment, loosely assemble M12X70 bolts (26) and M12 nuts (28) onto the ATD mount brackets around fan side and use M12X40 bolts (25) and M12 nuts (28) on the flywheel side as shown in the figure 14.
14. Loosen one of the horizontal bolt pair of either DPF or SCR that is already at the base of the ATD unit before tightening the vertical ATD nut for proper alignment.
15. Tighten the M12X70 bolts (26) and M12 (28) nuts loosely installed on step 13 in a sequence from left to right as shown in the figure 15 and 16.
16. Tighten all the of the bolts that were loosely assembled at step 8 and 9.
17. Uninstall the harness bracket on the ATD unit. Install a new bracket (6) using M6X35 (18) bolts and reuse the M8X18 bolts that were removed as shown in the figure 18.
18. Install the bracket (3) onto the intake side of the radiator as shown in the figure 12 using Isolators (4) and hex nut (5).

**Table 1: Tightening Torque**

Diameter x Pitch	Kgf-m	Foot-lbf	N-m
M8 x 1.25	1.5 ~ 2.9	10.6 ~ 20.9	14.4 ~ 28.3
M10 x 1.50	4.5 ~ 5.5	32.5 ~ 39.8	44.0 ~ 54.0
Band Clamp	1.5 ~ 2.9	10.6 ~ 20.9	14.4 ~ 28.3
U-Bolt	1.8 ~ 2.2	13.3 ~ 16.2	18 ~ 22
Nut, M8 X 1.25	1.5 ~ 2.9	10.6 ~ 20.9	14.4 ~ 28.3

## Installation Instructions

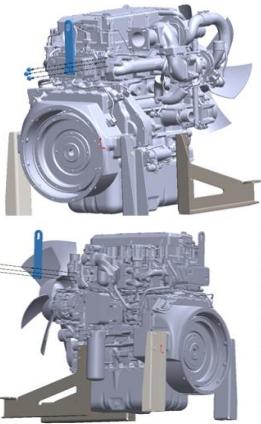


Figure 1

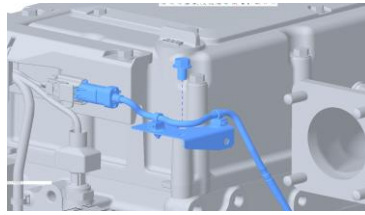


Figure 2

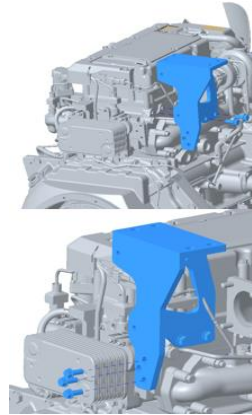


Figure 3

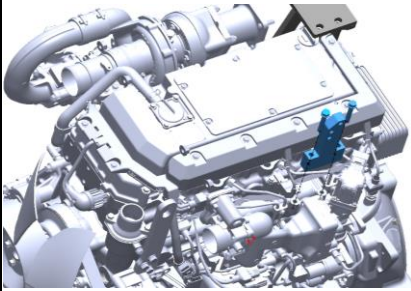


Figure 4

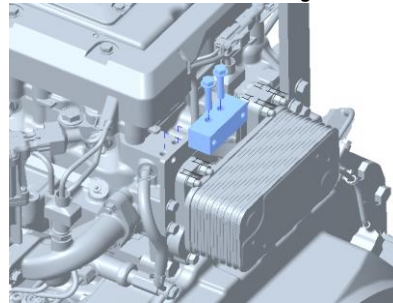


Figure 5

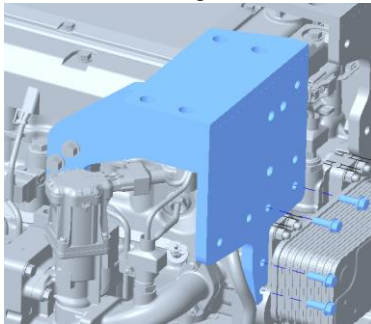


Figure 6

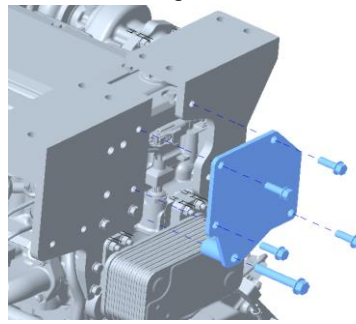


Figure 7

NOTE: Comply with torque standards in the table to avoid unexpected damage during installation or in the future.

**Table 1: Tightening Torque**

Diameter x Pitch	Kgf-m	Foot-lbf	N-m
M8 x 1.25	1.5 ~ 2.9	10.6 ~ 20.9	14.4 ~ 28.3
M10 x 1.50	4.5 ~ 5.5	32.5 ~ 39.8	44.0 ~ 54.0
Band Clamp	1.5 ~ 2.9	10.6 ~ 20.9	14.4 ~ 28.3
U-Bolt	1.8 ~ 2.2	13.3 ~ 16.2	18 ~ 22
Nut, M8 X 1.25	1.5 ~ 2.9	10.6 ~ 20.9	14.4 ~ 28.3

## Installation Instructions

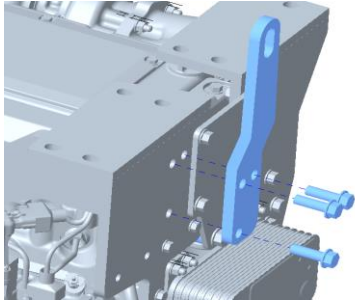


Figure 8

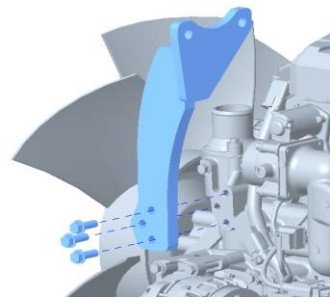


Figure 9

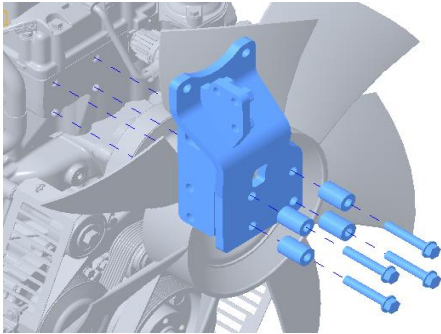


Figure 10

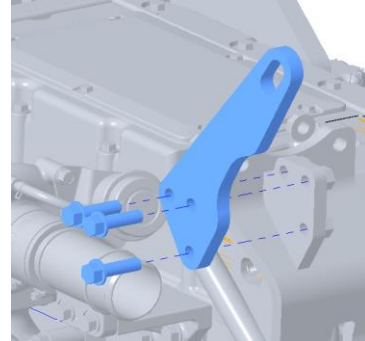


Figure 11

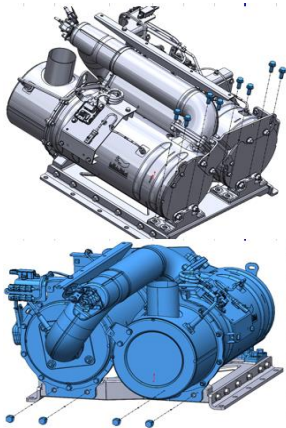


Figure 12

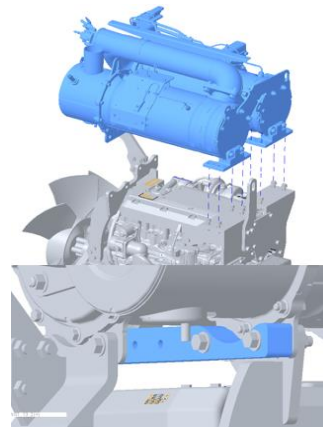


Figure 13

NOTE: Comply with torque standards in the table to avoid unexpected damage during installation or in the future.

Table 1: Tightening Torque

Diameter x Pitch	Kgf-m	Foot-lbf	N-m
M8 x 1.25	1.5 ~ 2.9	10.6 ~ 20.9	14.4 ~ 28.3
M10 x 1.50	4.5 ~ 5.5	32.5 ~ 39.8	44.0 ~ 54.0
Band Clamp	1.5 ~ 2.9	10.6 ~ 20.9	14.4 ~ 28.3
U-Bolt	1.8 ~ 2.2	13.3 ~ 16.2	18 ~ 22
Nut, M8 X 1.25	1.5 ~ 2.9	10.6 ~ 20.9	14.4 ~ 28.3

## Installation Instructions

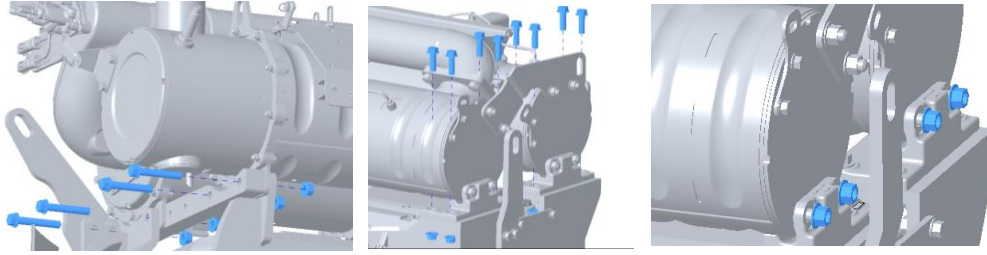


Figure 14

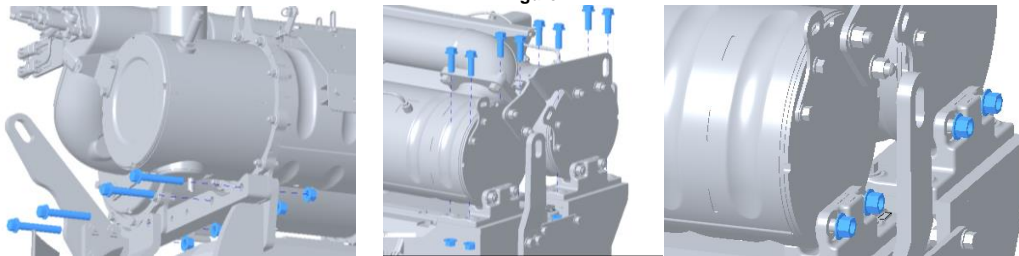


Figure 15

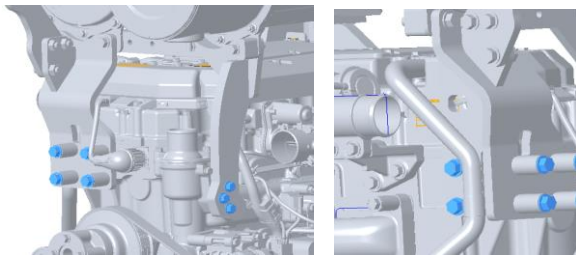


Figure 16

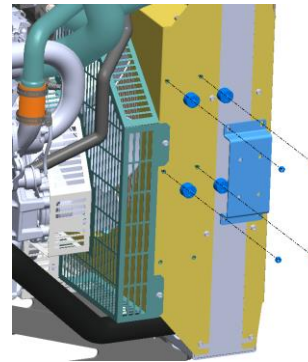


Figure 17

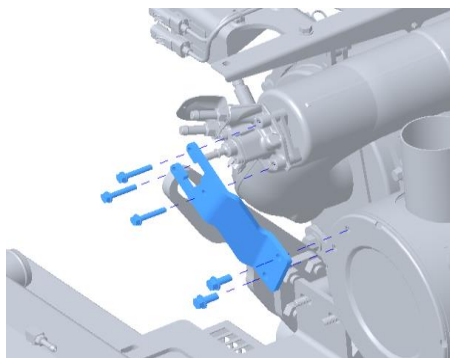


Figure 18

NOTE: Comply with torque standards in the table to avoid unexpected damage during installation or in the future.

Table 1: Tightening Torque

Diameter x Pitch	Kgf-m	Foot-lbf	N-m
M8 x 1.25	1.5 ~ 2.9	10.6 ~ 20.9	14.4 ~ 28.3
M10 x 1.50	4.5 ~ 5.5	32.5 ~ 39.8	44.0 ~ 54.0
Band Clamp	1.5 ~ 2.9	10.6 ~ 20.9	14.4 ~ 28.3
U-Bolt	1.8 ~ 2.2	13.3 ~ 16.2	18 ~ 22
Nut, M8 X 1.25	1.5 ~ 2.9	10.6 ~ 20.9	14.4 ~ 28.3