



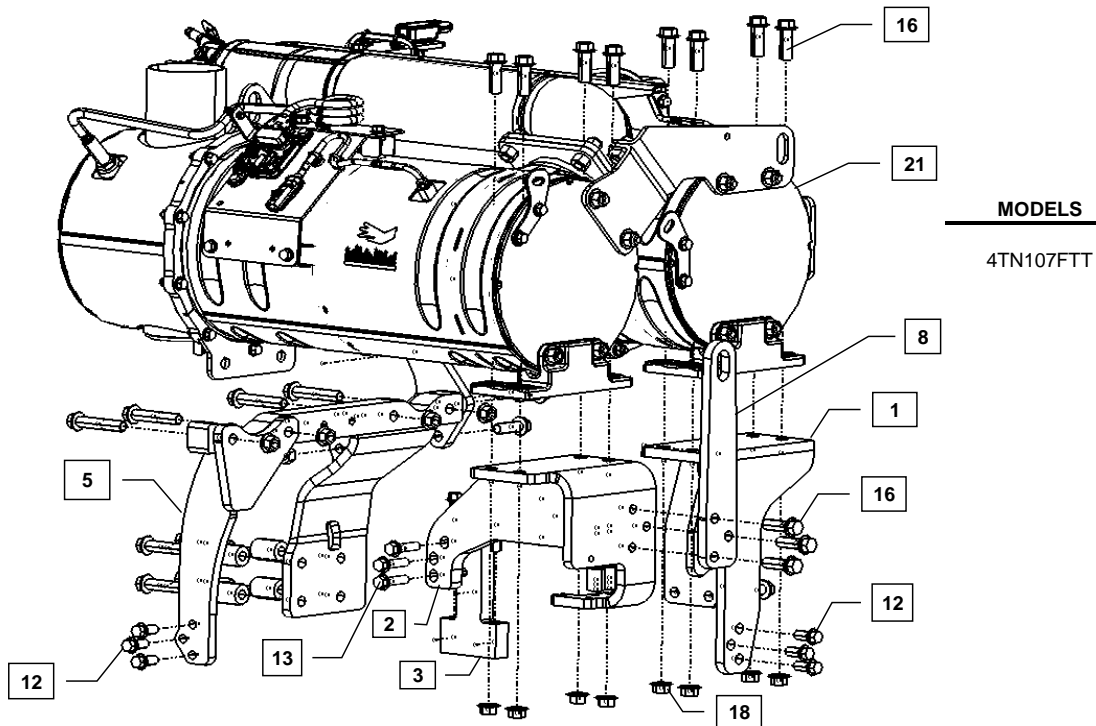
Supplement to Yanmar Kit Installation Instructions

SAFETY

This product is designed and intended only for use with a YANMAR engine. All safety and warning information contained in the Yanmar Operation Manual and Service Manual is adopted and incorporated to apply to the components, accessories, and parts that are utilized with Yanmar engines. Follow all instructions and precautions before installing this product, before operating, during operation, and during periodic maintenance procedures for your safety, the safety of others, and to protect the performance of your engine.



Item	Lev.	O	Part No.	Description	Quantity	Remarks
1	-		129G88-17500	ATD Mounting Bracket, Exhaust Flywheel Side	1	
2	-		129G88-17510	ATD Mounting Bracket, Intake Flywheel Side	1	
3	-		129G88-17520	ATD Mounting Bracket, Intake Flywheel side Support	1	
4	-		129G88-17530	ATD Mounting Bracket, Exhaust Fan Side	1	
5	-		129G88-17540	ATD Mounting Bracket, Intake Fan Side	1	
6	-		129G88-17550	ATD Mounting Bracket, Fan side Brace	1	
7	-		129G88-17600	Engine Lifting Bracket, Fan Side	1	
8	-		129G88-17620	Engine Lifting Bracket, Flywheel Side	1	
9	-		26106-060352	BOLT (7T PLATING) M6X35	3	
10	-		26106-080182	BOLT M8X18	2	Included with the engine
11	-		129E00-13610	BOLT (10.9T PLATING) M8X50	2	
12	-		26106-100252	BOLT (7T PLATING) M10X25	6	
13	-		26106-100402	BOLT (7T PLATING) M10X40	3	
14	-		26106-100602	BOLT (7T PLATING) M10X60	2	
15	-		26106-120302	BOLT (7T PLATING) M12X30	2	
16	-		26106-120402	BOLT (7T PLATING) M12X40	14	
17	-		26106-120702	BOLT (7T PLATING) M12X70	8	
18	-		26366-120002	FLANGE NUT (7T PLATING) M12	12	
19	-		129G88-17830	SPACER, M12 BOLT	4	
20	-		129G88-17840	SPACER, M8 BOLT	2	
21	-		129G01-17030	ATD	1	
22	-		129G88-17450	BRACKET, MISC	1	
23	-		129G88-17460	BRACKET, MISC	1	
24	-		129F88-19410	Isolator, 31.75 x 19.05, 5/16-18 X 5/8", Double Stud	4	
25	-		129F88-19420	5/16-18, Hex Nut, Nylon Insert Locknut	4	

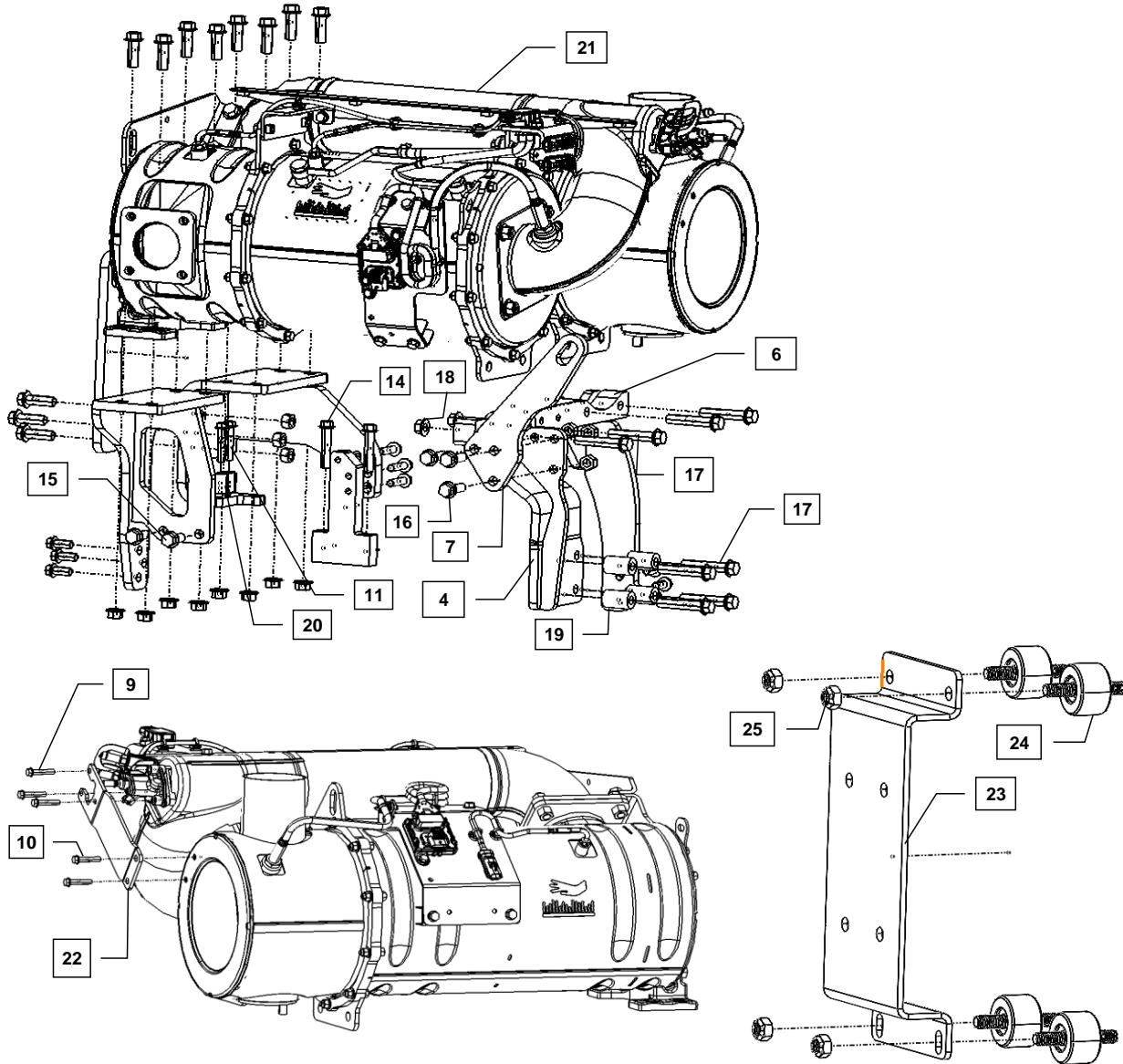


Note: Service parts are denoted by an asterisk. To replace non-service parts, the entire kit will need to be purchased.



Installation Instructions

Hand tighten all bolts and nuts until assembly is completed, then torque according to specifications in Table 1. The numbers in () represent the item numbers.



NOTE: Comply with torque standards in the table to avoid unexpected damage during installation or in the future.

Table 1: Tightening Torque			
Diameter x Pitch	Kgf-m	Foot-lbf	N-m
M8 x 1.25	1.5 ~ 2.9	10.6 ~ 20.9	14.4 ~ 28.3
M10 x 1.50	4.5 ~ 5.5	32.5 ~ 39.8	44.0 ~ 54.0
Band Clamp	1.5 ~ 2.9	10.6 ~ 20.9	14.4 ~ 28.3
U-Bolt	1.8 ~ 2.2	13.3 ~ 16.2	18 ~ 22
Nut, M8 X 1.25	1.5 ~ 2.9	10.6 ~ 20.9	14.4 ~ 28.3



Installation Instructions

Hand tighten all bolts and nuts until assembly is completed, then torque according to specifications in Table 1. The numbers in () represent the item numbers.

1. Remove the lift eye and associated bolts on flywheel and fan side that are supplied with the engine as shown in figure 1 on the last page.
2. Unplug exhaust temperature sensor and unbolt sensor harness mounting bracket to mount ATD mount bracket (1) as shown in figure 2. Align the ATD mount bracket (1) and assemble onto the exhaust flywheel side using M12X30 (15) and M10X25 (12) bolts as shown in the figure 2. Reinstall the barcket and reconnect the harness.
3. Install the ATD mount bracket support (3) on the intake flywheel side using M10X60 (14) bolts as shown in the figure 3.
4. Assemble the ATD mount bracket (2) on the instake flywheel side and to the support bracket (3) using M10X40 (13), spacers (20) and M8X50 (11) bolts as shown in the figure 4.
5. Install the engine lifting eye, flywheel side (8) on the ATD mount bracket (2) using M12X25 bolts (12) as shown in the figure 5.
6. Loosely assemble the ATD mount bracket (5) near intake fan side as shown in the figure 6 using M10X25 bolts (12).
7. Loosely assemble the ATD mount bracket (4) on exhaust fan side as shown in the figure 7 using M12 spacers (19) and M12X70 bolts (17).
8. Install the engine lighting eye, fan side (7) on the ATD mount bracket (4) as shown in the figure 8 using M12X40 (16) bolts.
9. Uninstall the ATD unit (21) from the pre-installed bracket by removing the M12X30 and M12X70 bolts as shown in the figure 9.
10. Align the ATD unit (21) to assemble onto the front and rear ATD mounting brackets using sliding ATD mounting bracket, fan side brace (6). Slide the ATD mount bracket (6) after the ATD unit is lined up such that the bracket aligns with the holes to fit onto the ATD unit as shown in the figure 10.
11. After alignment, loosely assemble M12X70 bolts (17) and M12 nuts (18) onto the ATD mount brackets around fan side and use M12X40 bolts (16) and M12 nuts (18) on the flywheel side.
12. Disassemble one of the horizontal bolt pair of either DPF or SCR that is already at the base of the ATD unit before tightening the vertical ATD nut for proper alignment.
13. At first tighten the M12nuts (18) that was installed at step 11 and then tighten the M12 nuts (18) that was loosened at step 11. Now tighten the M12 nuts that were loosened at step 12.
14. Tighten all the M10X25 (12) and M12X70 (17) bolts for secure mounting of ATD unit on the mounting brackets.
15. Uninstall the harness bracket on the ATD unit as shown in the figure 11 and hold on to the bolts that were removed. Install a new bracket (22) using M6X35 (9) bolts and reuse the M8X18 (10) bolts that were removed.
16. Install the bracket (23) onto the intake side of the radiator as shown in the figure 12 using Isolators (24) and hex nut (25).

Table 1: Tightening Torque

Diameter x Pitch	Kgf-m	Foot-lbf	N-m
M8 x 1.25	1.5 ~ 2.9	10.6 ~ 20.9	14.4 ~ 28.3
M10 x 1.50	4.5 ~ 5.5	32.5 ~ 39.8	44.0 ~ 54.0
Band Clamp	1.5 ~ 2.9	10.6 ~ 20.9	14.4 ~ 28.3
U-Bolt	1.8 ~ 2.2	13.3 ~ 16.2	18 ~ 22
Nut, M8 X 1.25	1.5 ~ 2.9	10.6 ~ 20.9	14.4 ~ 28.3



Installation Instructions

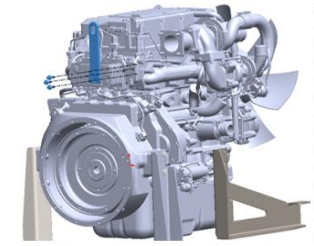


Figure 1

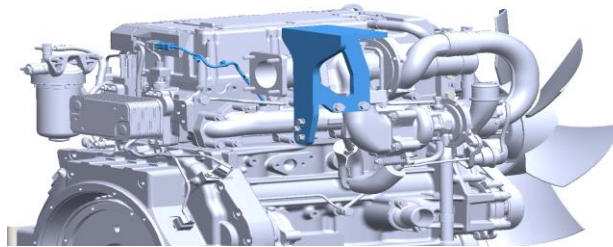


Figure 2

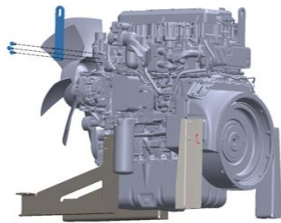


Figure 3

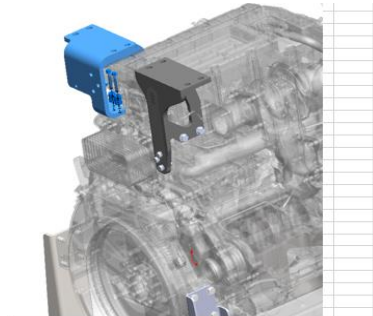


Figure 4

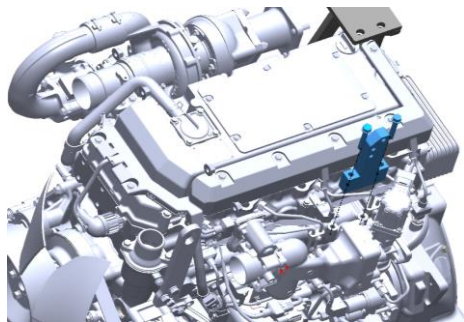


Figure 5

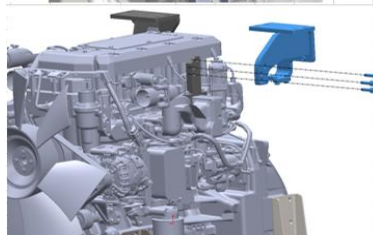


Figure 6

NOTE: Comply with torque standards in the table to avoid unexpected damage during installation or in the future.

Table 1: Tightening Torque

Diameter x Pitch	Kgf-m	Foot-lbf	N-m
M8 x 1.25	1.5 ~ 2.9	10.6 ~ 20.9	14.4 ~ 28.3
M10 x 1.50	4.5 ~ 5.5	32.5 ~ 39.8	44.0 ~ 54.0
Band Clamp	1.5 ~ 2.9	10.6 ~ 20.9	14.4 ~ 28.3
U-Bolt	1.8 ~ 2.2	13.3 ~ 16.2	18 ~ 22
Nut, M8 X 1.25	1.5 ~ 2.9	10.6 ~ 20.9	14.4 ~ 28.3

Installation Instructions

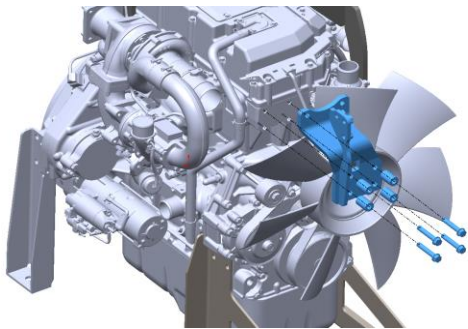


Figure 7

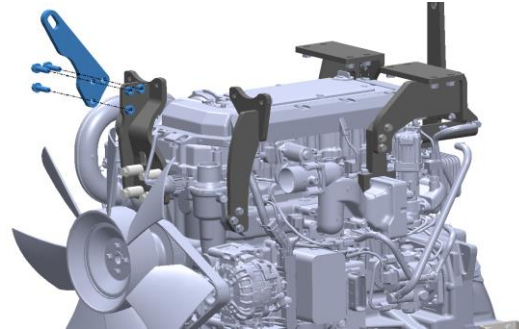


Figure 8

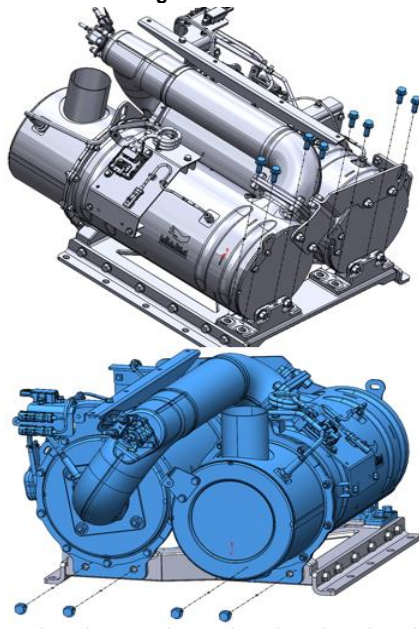


Figure 9

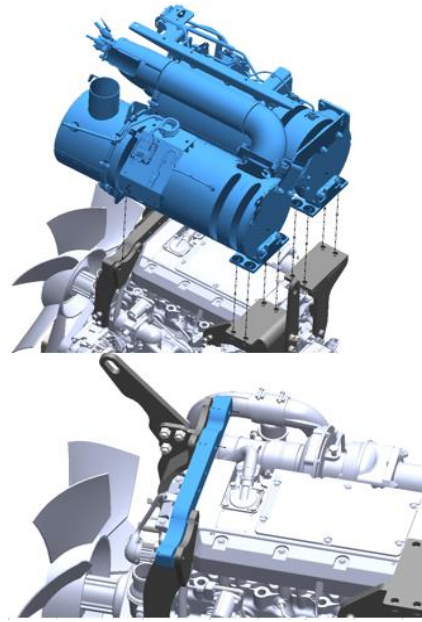


Figure 10

NOTE: Comply with torque standards in the table to avoid unexpected damage during installation or in the future.

Table 1: Tightening Torque			
Diameter x Pitch	Kgf-m	Foot-lbf	N-m
M8 x 1.25	1.5 ~ 2.9	10.6 ~ 20.9	14.4 ~ 28.3
M10 x 1.50	4.5 ~ 5.5	32.5 ~ 39.8	44.0 ~ 54.0
Band Clamp	1.5 ~ 2.9	10.6 ~ 20.9	14.4 ~ 28.3
U-Bolt	1.8 ~ 2.2	13.3 ~ 16.2	18 ~ 22
Nut, M8 X 1.25	1.5 ~ 2.9	10.6 ~ 20.9	14.4 ~ 28.3



Installation Instructions

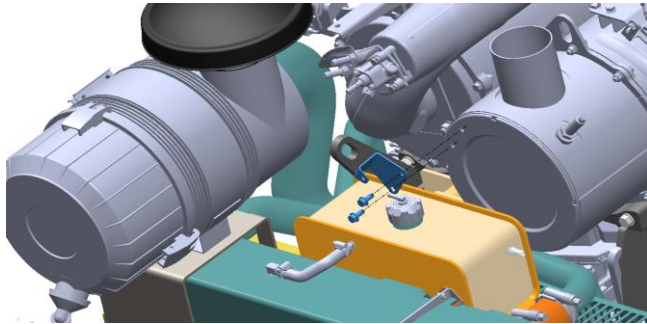


Figure 11

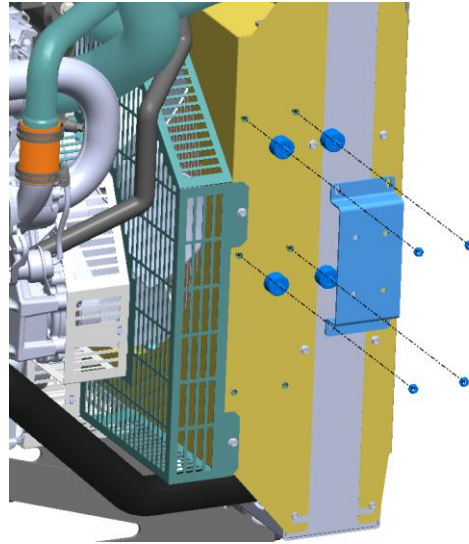


Figure 12

NOTE: Comply with torque standards in the table to avoid unexpected damage during installation or in the future.

Table 1: Tightening Torque			
Diameter x Pitch	Kgf-m	Foot-lbf	N-m
M8 x 1.25	1.5 ~ 2.9	10.6 ~ 20.9	14.4 ~ 28.3
M10 x 1.50	4.5 ~ 5.5	32.5 ~ 39.8	44.0 ~ 54.0
Band Clamp	1.5 ~ 2.9	10.6 ~ 20.9	14.4 ~ 28.3
U-Bolt	1.8 ~ 2.2	13.3 ~ 16.2	18 ~ 22
Nut, M8 X 1.25	1.5 ~ 2.9	10.6 ~ 20.9	14.4 ~ 28.3