



Supplement to Yanmar Kit Installation Instructions

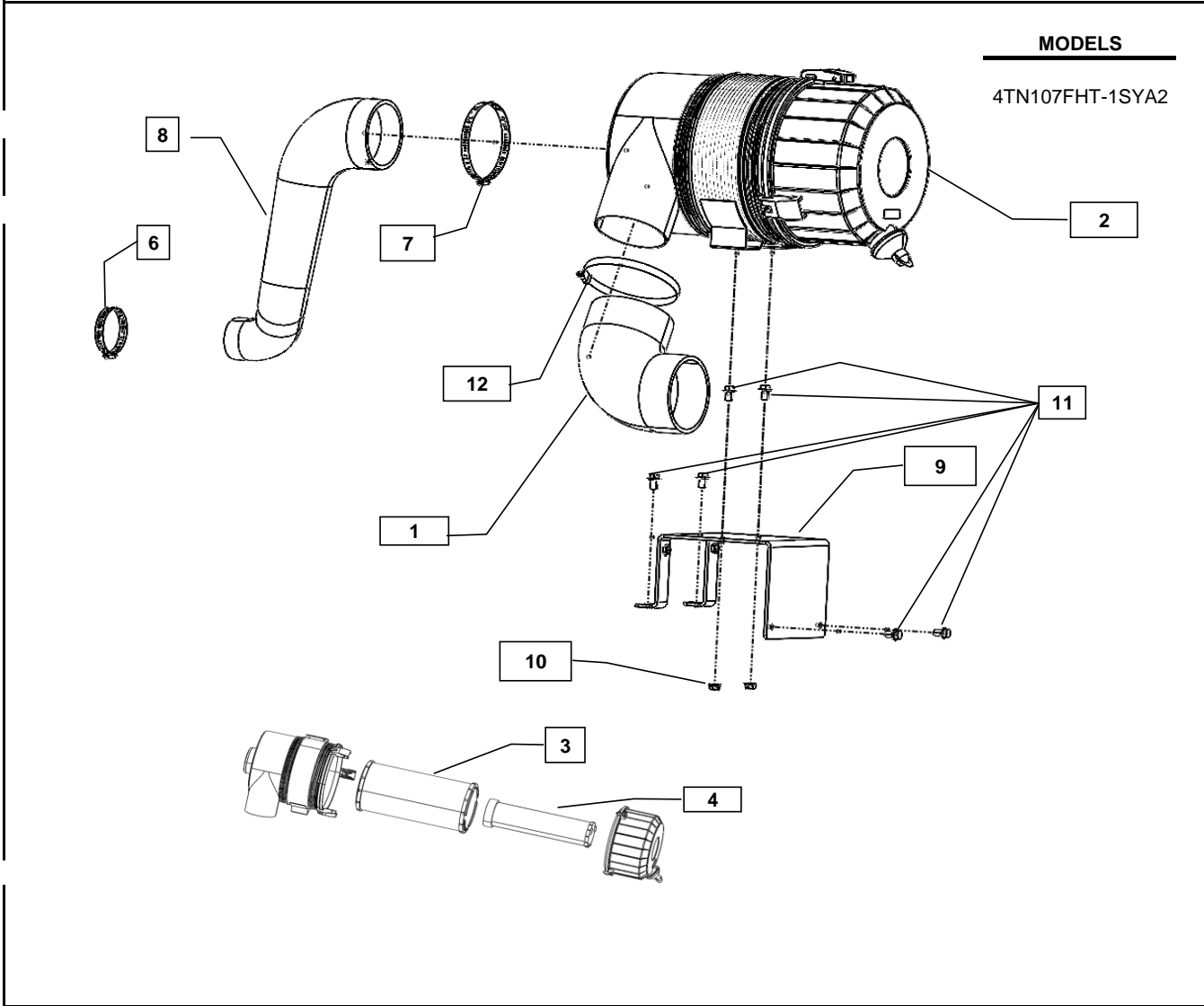
## SAFETY

---

This product is designed and intended only for use with a YANMAR engine. All safety and warning information contained in the Yanmar Operation Manual and Service Manual is adopted and incorporated to apply to the components, accessories, and parts that are utilized with Yanmar engines. Follow all instructions and precautions before installing this product, before operating, during operation, and during periodic maintenance procedures for your safety, the safety of others, and to protect the performance of your engine.



Item	Lev.	O	Part No.	Description	Quantity	Remarks
1	--		129G90-12250*	HOSE,AIR INT ELBOW	1	
2	--		129G88-12500*	AIR CLEANER ASSY	1	
3	---		129G90-12520*	ELEMENT ASSY, PRECLEAN	1	
4	---		129G90-12510*	ELEMENT ASSY, OUTER	1	
5	--		129G90-12660*	BRACKET SET, KAC26	1	
6	---		129F88-12010	CLAMP, HOSE	1	
7	---		129F88-12020*	CLAMP, HOSE	1	
8	---		129G90-12210*	HOSE,AIR INTAKE	1	
9	---		129G90-12600	BRACKET, AIR CLEANER	1	
10	---		129689-44280*	NUT, M8	2	
11	---		129689-44290*	BOLT, M8X16	6	
12	--		23000-146000*	CLAMP, HOSE 146	1	



Note: 1. Part codes are not assigned to non-servicable component parts.  
 2. Service parts are denoted by an asterisk. To replace non-service parts, the entire kit will need to be purchased.



## Installation Instructions

Hand tighten all bolts and nuts until assembly is completed, then torque according to specifications in Table 1. The numbers in () represent the item numbers.

1. Fasten the Air Cleaner Bracket (9) onto the Air Cleaner Assembly (2) using two M8x1.25-16 bolts (11) and M8 Nuts (10) as shown in figure 1.
2. Assemble Air Cleaner Assembly (2) and Air Cleaner Bracket (9) on the radiator using four M8x1.25-16 bolts (11) as shown in figure 2 & 3.
3. Fasten the small diameter of the Air Cleaner Hose (8) to the turbo inlet using Hose Clamp (6). Fasten the large diameter end of the Hose to the Air Cleaner (2) using Hose Clamp (7) as shown in figure 4.
4. Fasten the Intake Hose (1) to the inlet of Air Cleaner Assembly (2) using the Hose Clamp (12) as shown in figure 4.

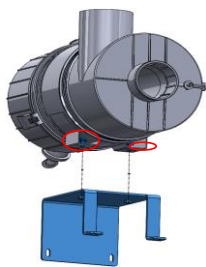


fig. 1

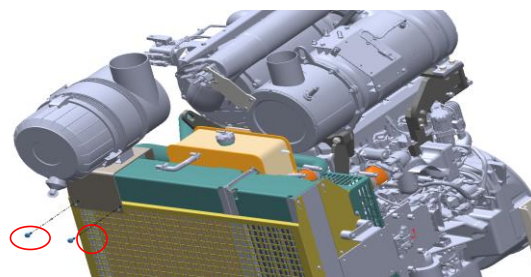


fig. 2

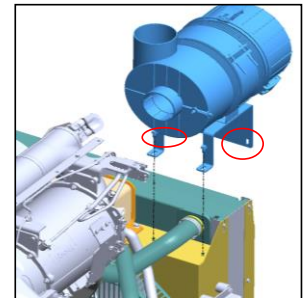


fig. 3

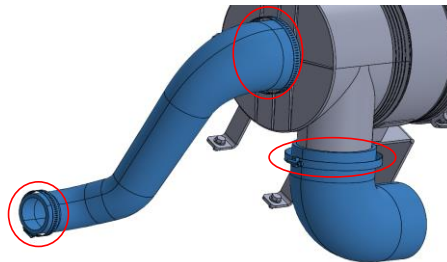


fig. 4

NOTE: Comply with torque standards in the table to avoid unexpected damage during installation or in the future.

**Table 1: Tightening Torque**

Diameter x Pitch	Kgf-m	Foot-lbf	N-m
M8 x 1.25	1.5 ~ 2.9	10.6 ~ 20.9	14.4 ~ 28.3
Hose Clamps	0.25 ~ 0.35	1.84 ~ 2.51	2.5 ~ 3.4