



## Supplement to Yanmar Kit Installation Instructions

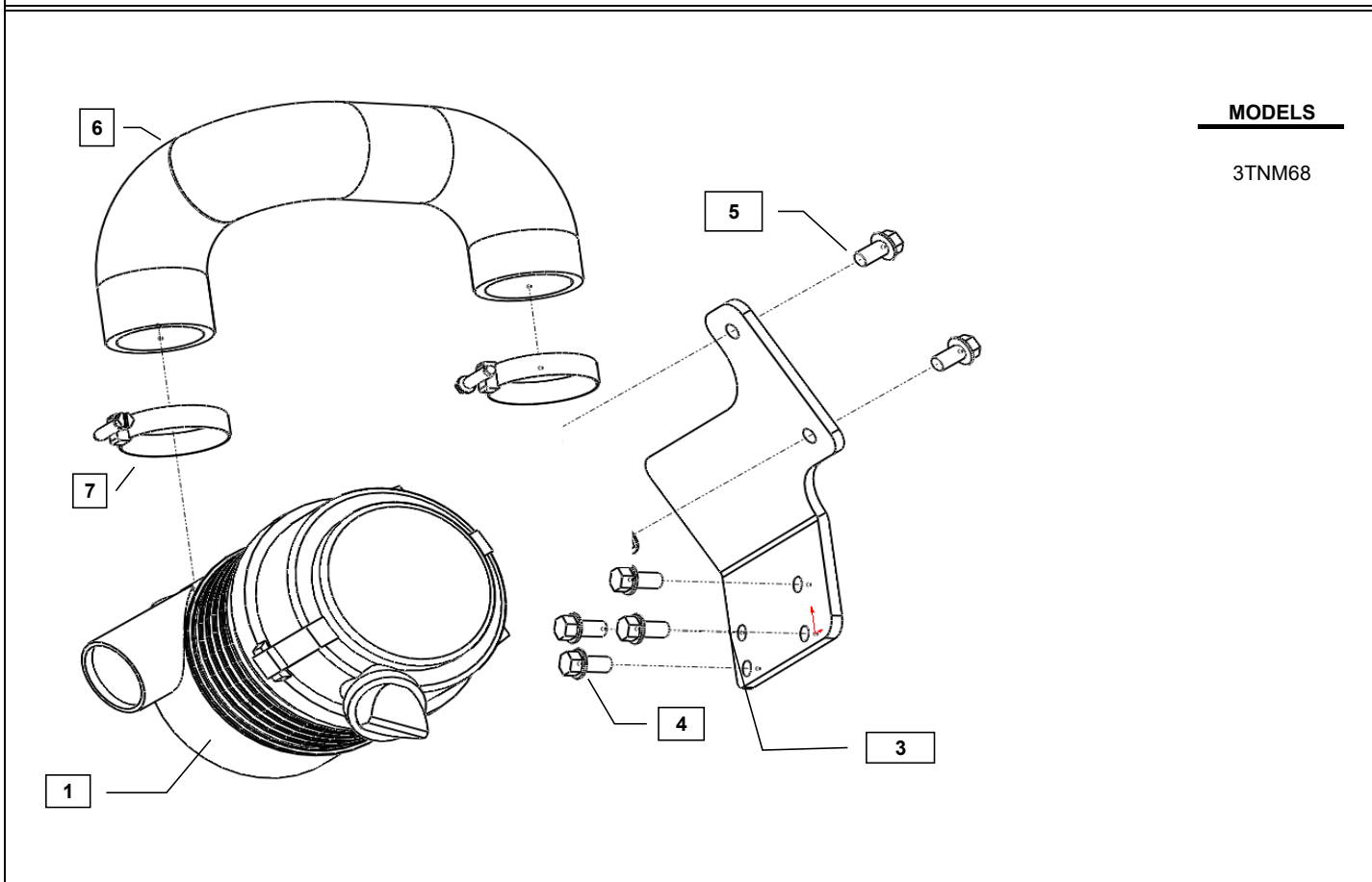
# SAFETY

---

This product is designed and intended only for use with a YANMAR engine. All safety and warning information contained in the Yanmar Operation Manual and Service Manual is adopted and incorporated to apply to the components, accessories, and parts that are utilized with Yanmar engines. Follow all instructions and precautions before installing this product, before operating, during operation, and during periodic maintenance procedures for your safety, the safety of others, and to protect the performance of your engine.



Item	Lev.	O	Part No.	Description	Quantity	Remarks
1	-		119128-12500*	Air Cleaner Assy	1	
5	---		119128-12561*	Bracket, Air Cleaner	1	
6	--		119128-12600*	Hose, Air Intake	1	
7	--		26106-080162*	Bolt, M8 X 1.25 - 16, (Flanged hex head)	4	
8	--		26013-080162*	Bolt, M8 x 1.25 - 16, (Flanged hex head, captive spring lock washer)	2	
9	-		23000-054000*	Clamp, Hose	2	
10	-		119128-55651*	Fuel Filter Bracket	1	



Note: Service parts are denoted by an asterisk. To replace non-service parts, the entire kit will need to be purchased.



## Installation Instructions

Hand tighten all bolts and nuts until assembly is completed, then torque according to specifications in Table 1. The numbers in ( ) represent the item numbers.

- 1 Remove the existing fuel filter and bracket.
- 2 Fasten the Air Cleaner Bracket (3) on to the rear face of the cylinder head using M8 x 1.25 - 16 bolts (4).
- 3 Assemble the Air Cleaner Assembly (1) to the Bracket (3) with M8 x 1.25 - 16 bolts (5).
- 4 Fasten one end of the Air Cleaner Hose (6) to the Intake manifold using Hose Clamp (7). Fasten the other end of the Hose to the Air Cleaner Assembly (1) using the other identical Hose Clamp (7).
- 5 Install the Fuel Filter Bracket (12) onto the rear fuel injection side of the cylinder head.

NOTE: Comply with torque standards in the table to avoid unexpected damage during installation or in the future.

**Table 1: Tightening Torque**

Diameter x Pitch	Kgf-m	Foot-lbf	N-m
M8 x 1.25	1.5 ~ 2.9	10.6 ~ 20.9	14.4 ~ 28.3