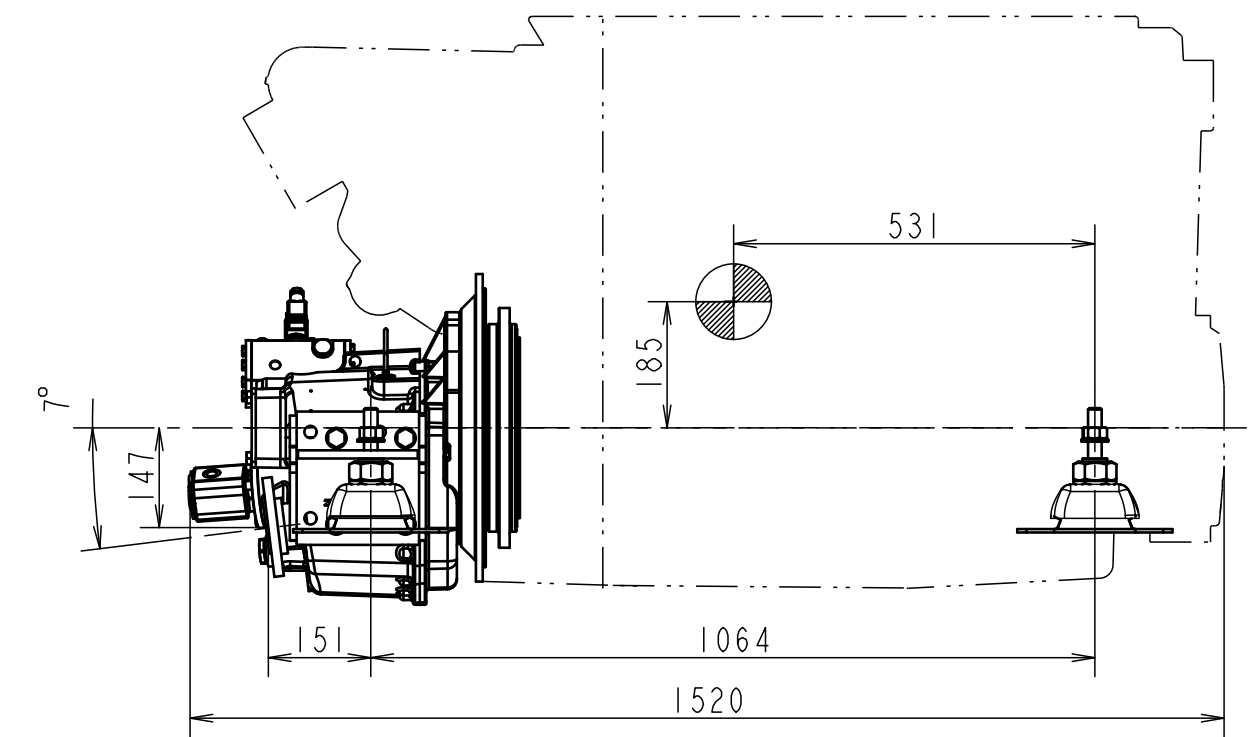
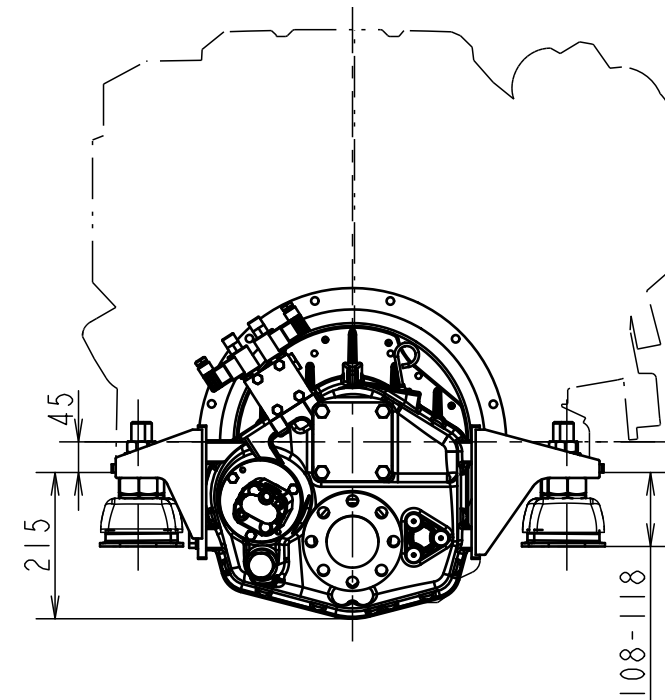
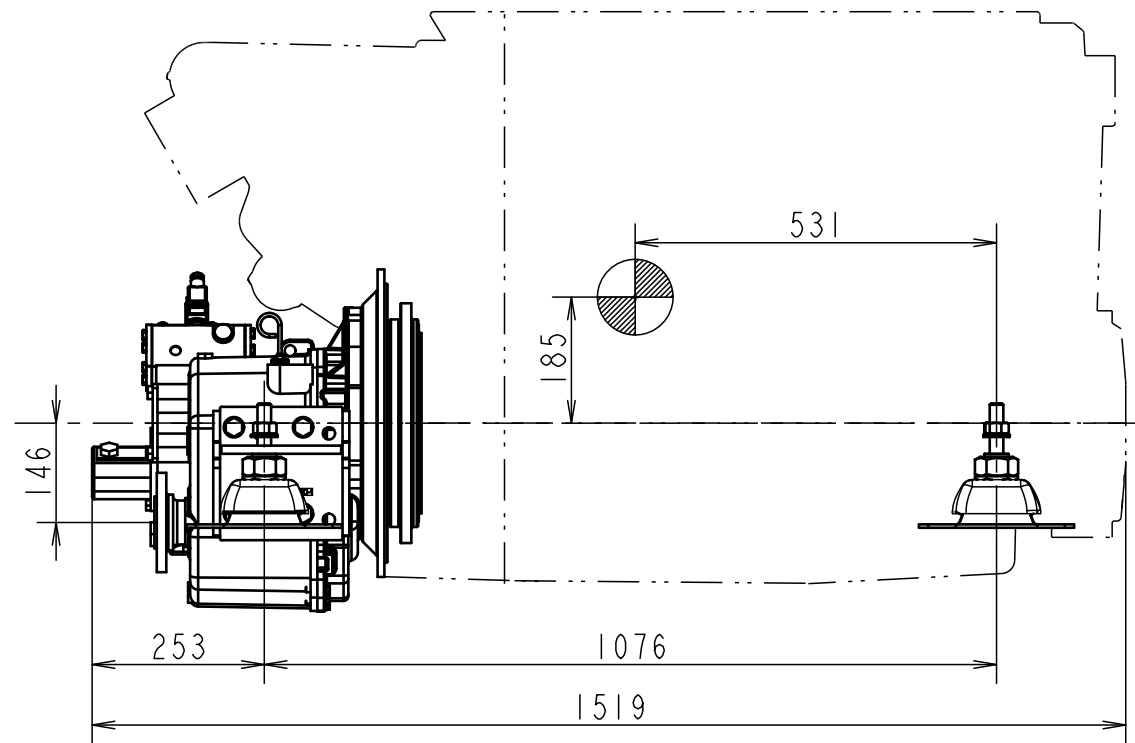
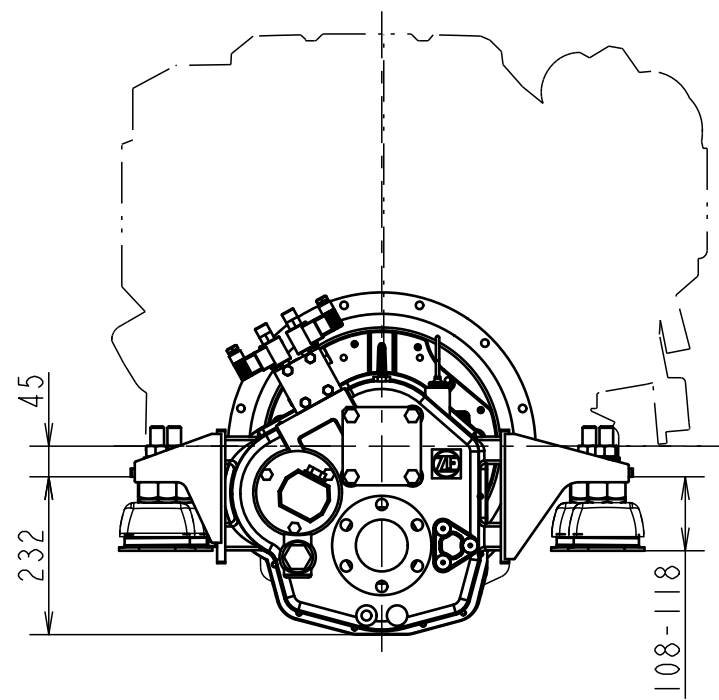
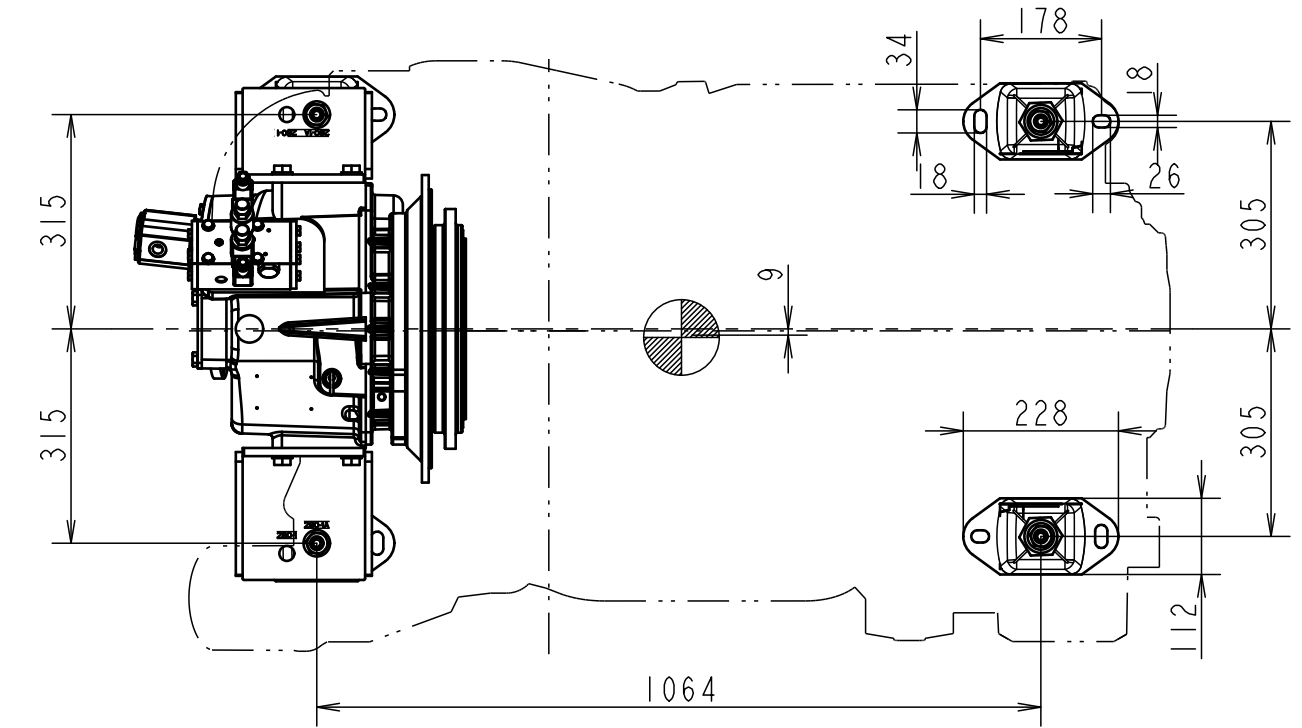
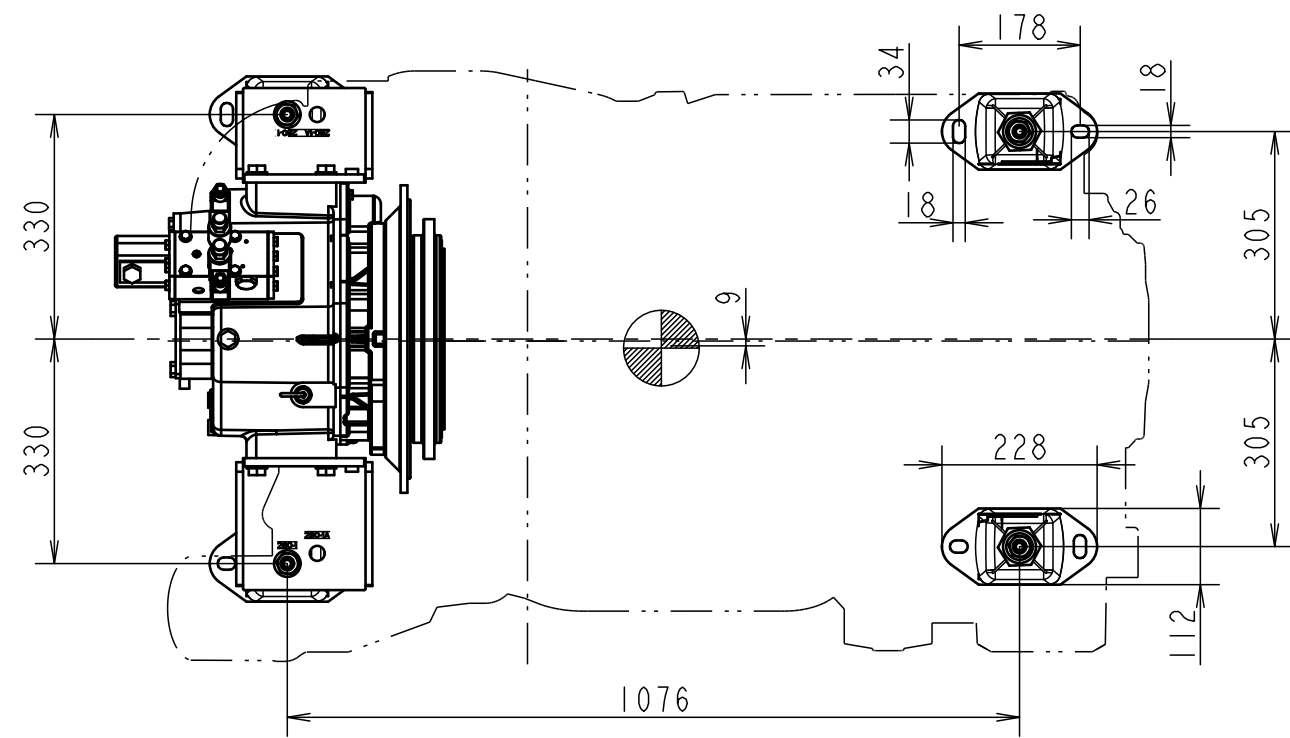


CAREER

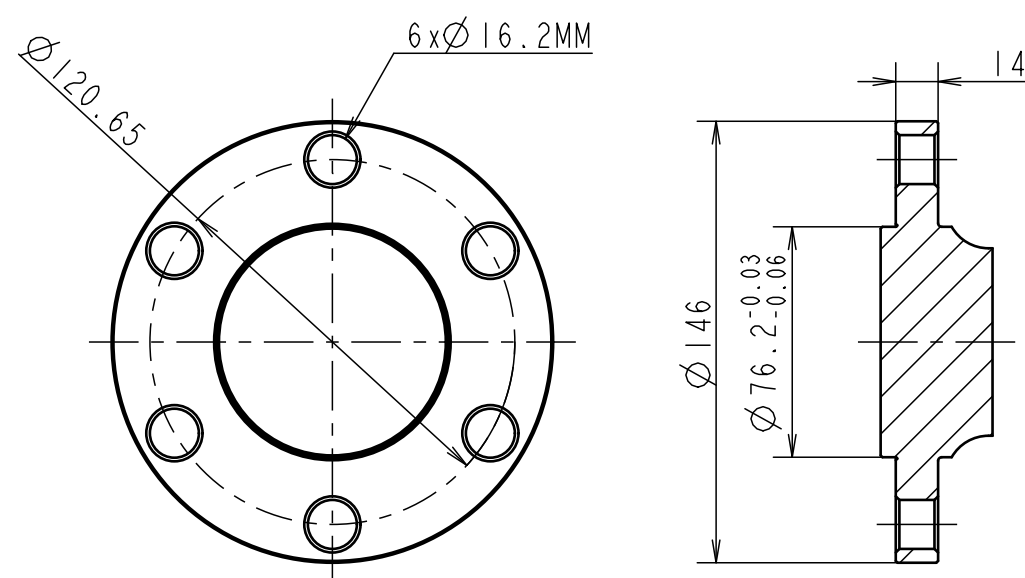


ZF280-1 MARINE GEAR

ZF280-1A MARINE GEAR

SHOWS CENTER OF GRAVITY

NOTE:
1. REFER TO B2-63100-0010 DRAWING FOR DETAIL OF ENGINE.
* SPECIAL ORDER RATIO



SCALE 2:5 DETAIL OF COUPLING ZF280-1(A)

GEAR MODEL	REDUCTION				DRY ENGINE WEIGHT	DIRECTION OF ROTATION (AT OUTPUT COUPLING)
	0.814*	1.000	1.056*	1.139*		
ZF 280-1	1.214*	1.300	1.514*	2.000	853 kg	BOTH
	2.478				853 kg	
	1.118*	1.483	1.769	2.000	853 kg	
ZF280-1A	2.227*	2.476			853 kg	

量産用 FOR MASS PRODUCTION

MANAGER

SEC. MANAGER	MODEL	6LF 485	6LF 530	6LF 550	SCALE	1:10
CHECKED	SPECIALIST	QTY	1	1	MATERIAL	
DESIGNED	DRAWN	DATE: Y.M.D	6LF APPLICATION			
		2021.01.27				
YANMAR			CODE	B2-63100-0020		
YANMAR MARINE INTERNATIONAL B.V.			DRAW SIZE	A2		

3D-CAD

NOTICE

GEOMETRICAL TOLERANCE

KIND OF TOLERANCE

SYMBOL

FORM

PARALLELISM TOLERANCE

PERPENDICULARITY TOLERANCE

ANGULARITY TOLERANCE

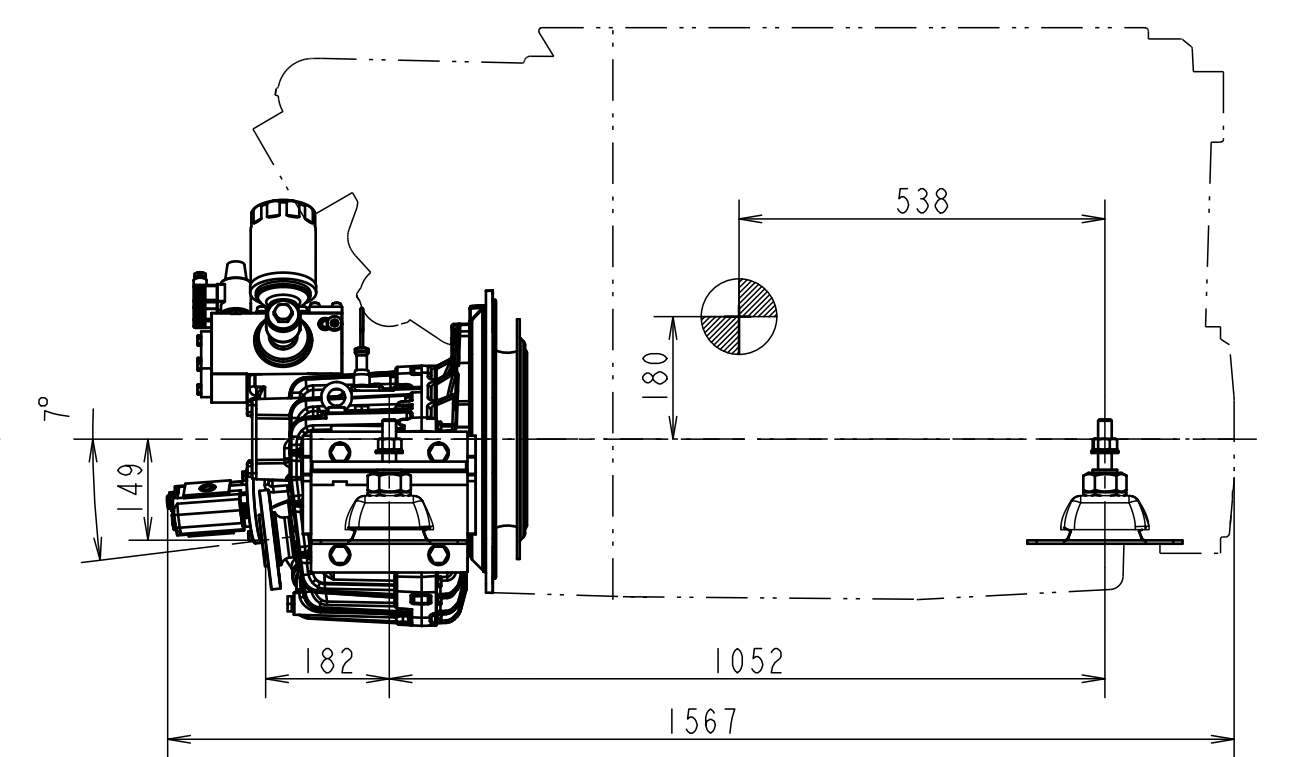
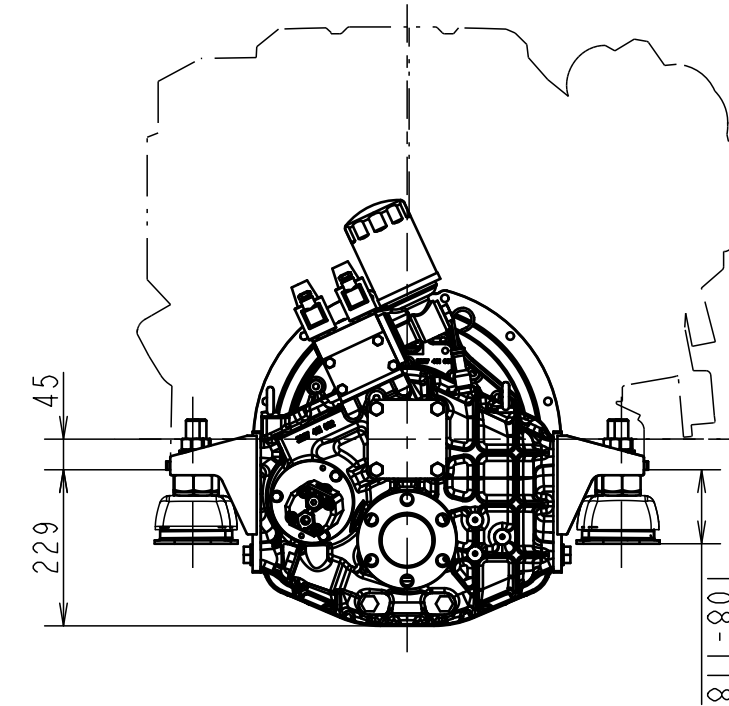
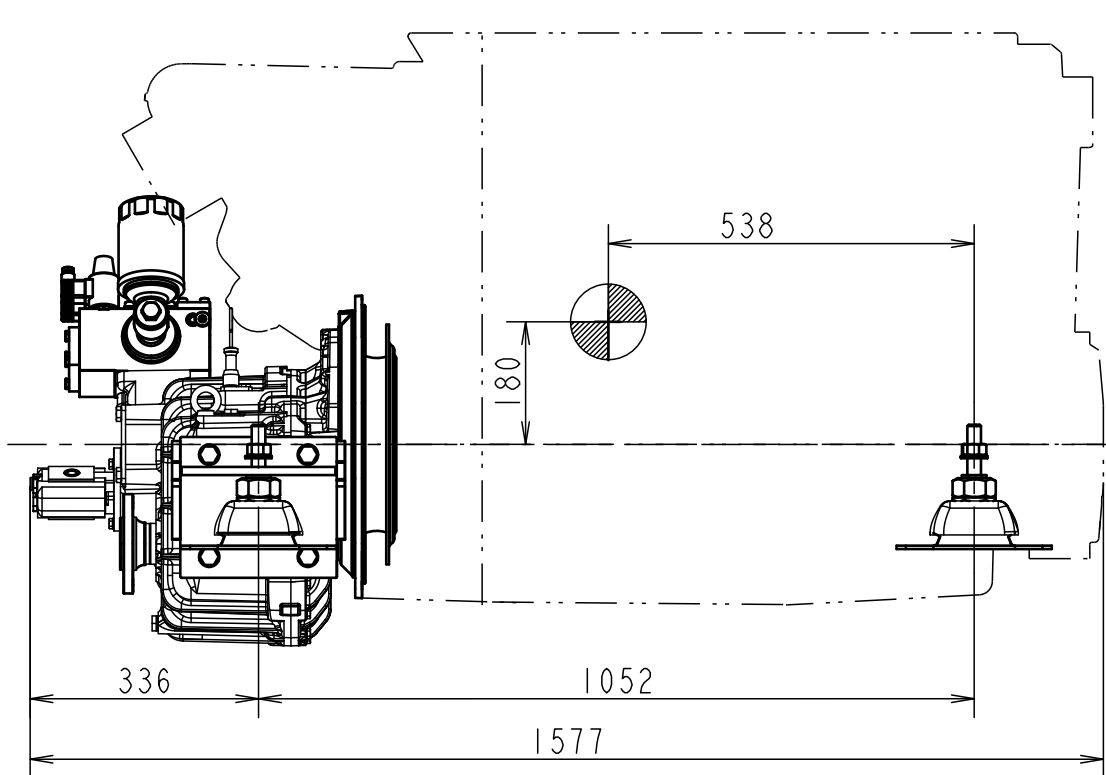
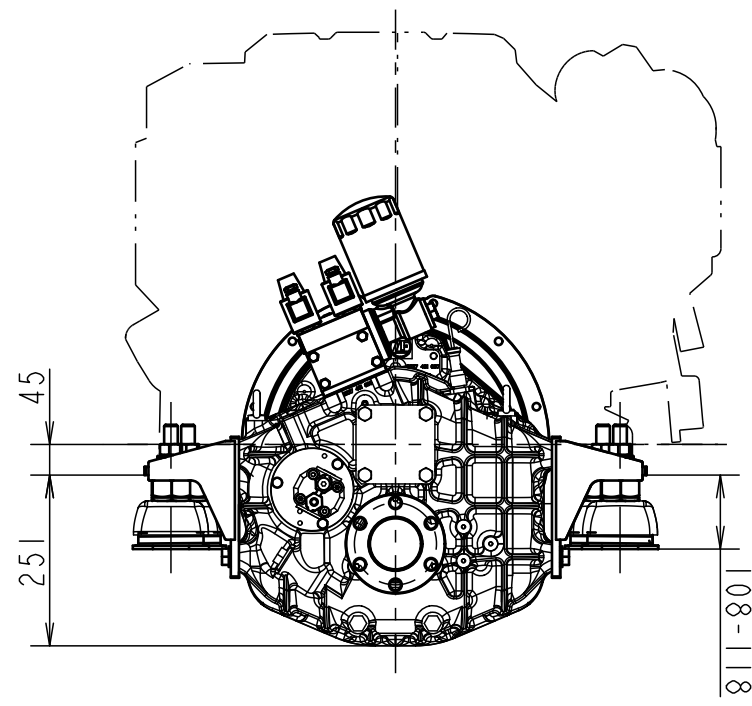
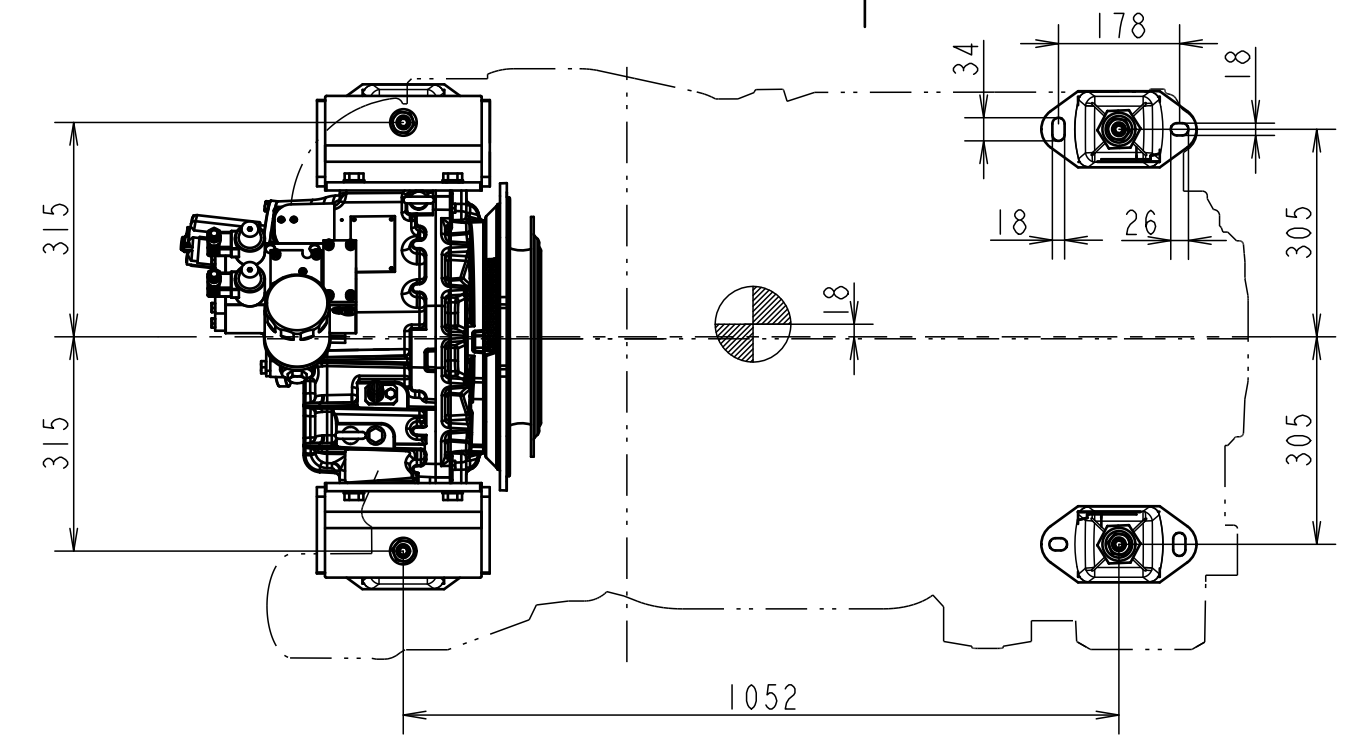
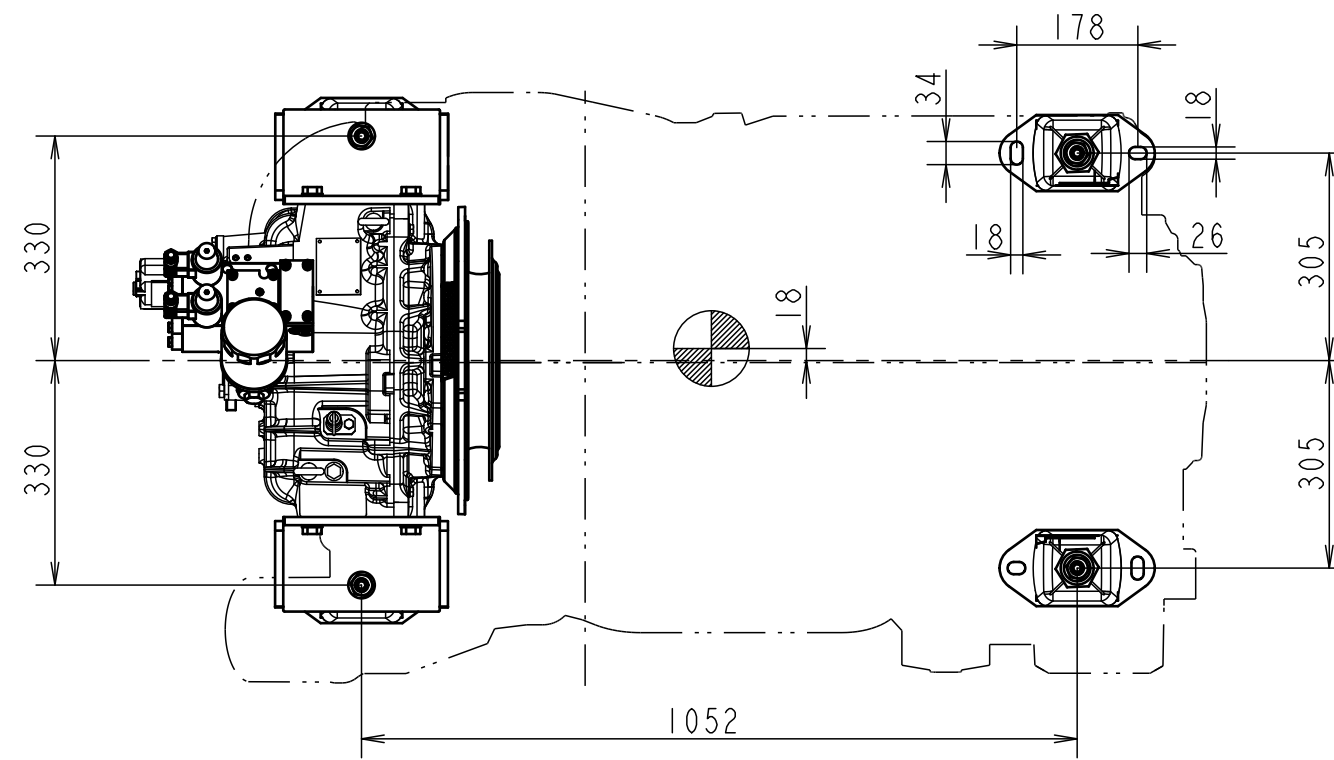
POSITIONAL TOLERANCE

CONCENTRICITY TOLERANCE

SYMMETRY TOLERANCE

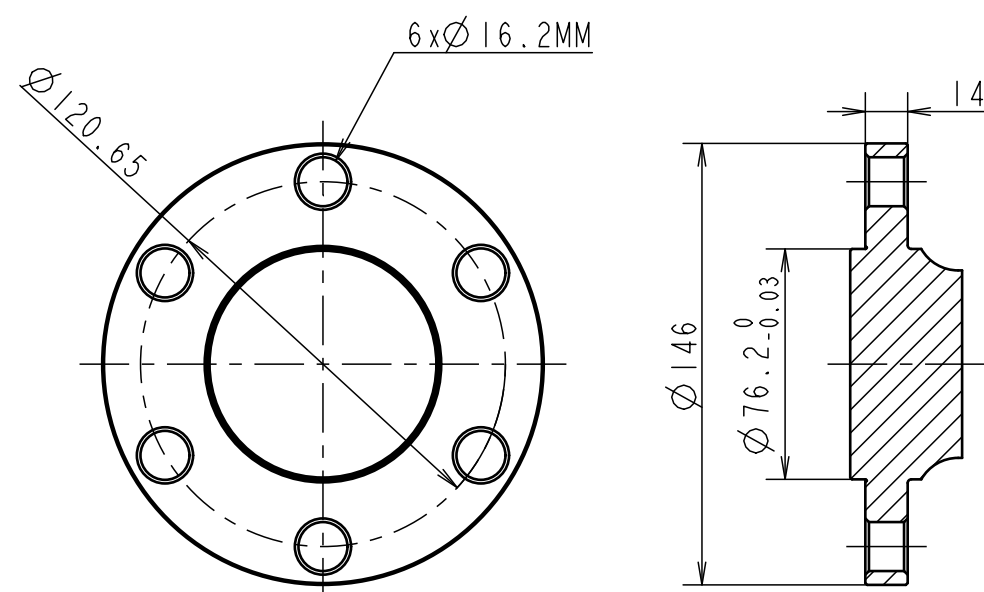
TOTAL RUN-OUT TOLERANCE

CAREER



ZF286-1 MARINE GEAR

ZF286-1A MARINE GEAR



SCALE 2:5 DETAIL OF COUPLING ZF286(A)

SHOWS CENTER OF GRAVITY

NOTE:
1. REFER TO B2-63100-0010 DRAWING FOR DETAIL OF ENGINE.
* SPECIAL ORDER RATIO

GEAR MODEL	REDUCTION				DRY ENGINE WEIGHT	DIRECTION OF ROTATION (AT OUTPUT COUPLING)
	0.923*	1.000*	1.237*	1.400*		
ZF 286	1.500	1.966	2.269	2.481*	866 kg	BOTH
	2.971				866 kg	
ZF286A	1.200*	1.484*	1.750	1.962	866 kg	
	2.208	2.391	2.500		866 kg	

量産用 FOR MASS PRODUCTION

MANAGER

SEC. MANAGER	MODEL	6LF 485	6LF 530	6LF 550	SCALE	1:10
CHECKED	SPECIALIST	QTY	1	1	MATERIAL	
DESIGNED	DRAWN	DATE: Y.M.D	2021.01.27			
		NAME	6LF APPLICATION			
		YANMAR		CODE	B2-63100-0020	DRAW SIZE A2
		YANMAR MARINE INTERNATIONAL B.V.				

3D-CAD

NOTICE

GEOMETRICAL TOLERANCE

KIND OF TOLERANCE

SYMBOL

FORM

PARALLELISM TOLERANCE

PERPENDICULARITY TOLERANCE

ANGULARITY TOLERANCE

POSITIONAL TOLERANCE

CONCENTRICITY TOLERANCE

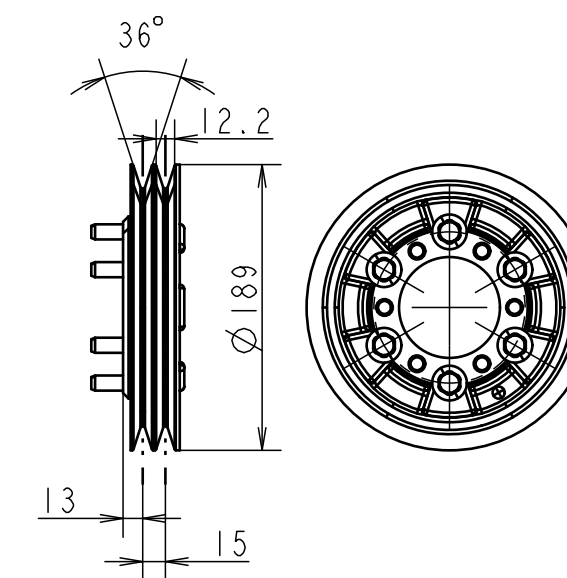
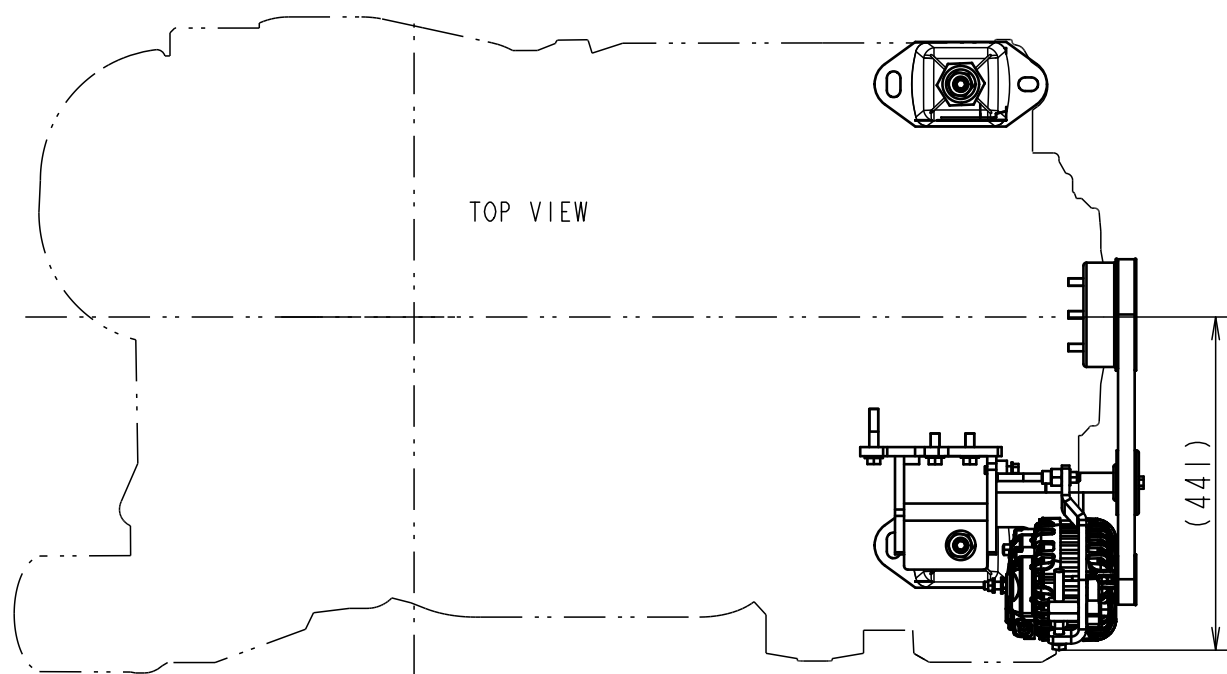
SURFACE TOLERANCE

SYMMETRY TOLERANCE

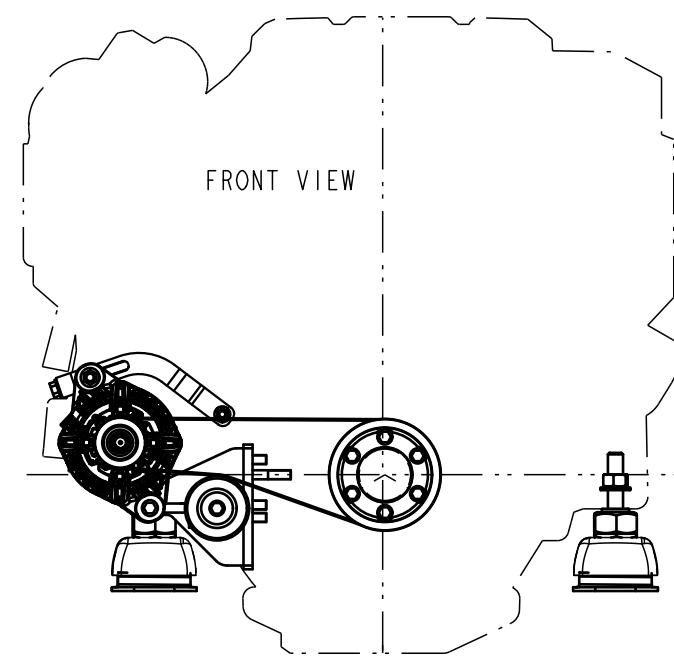
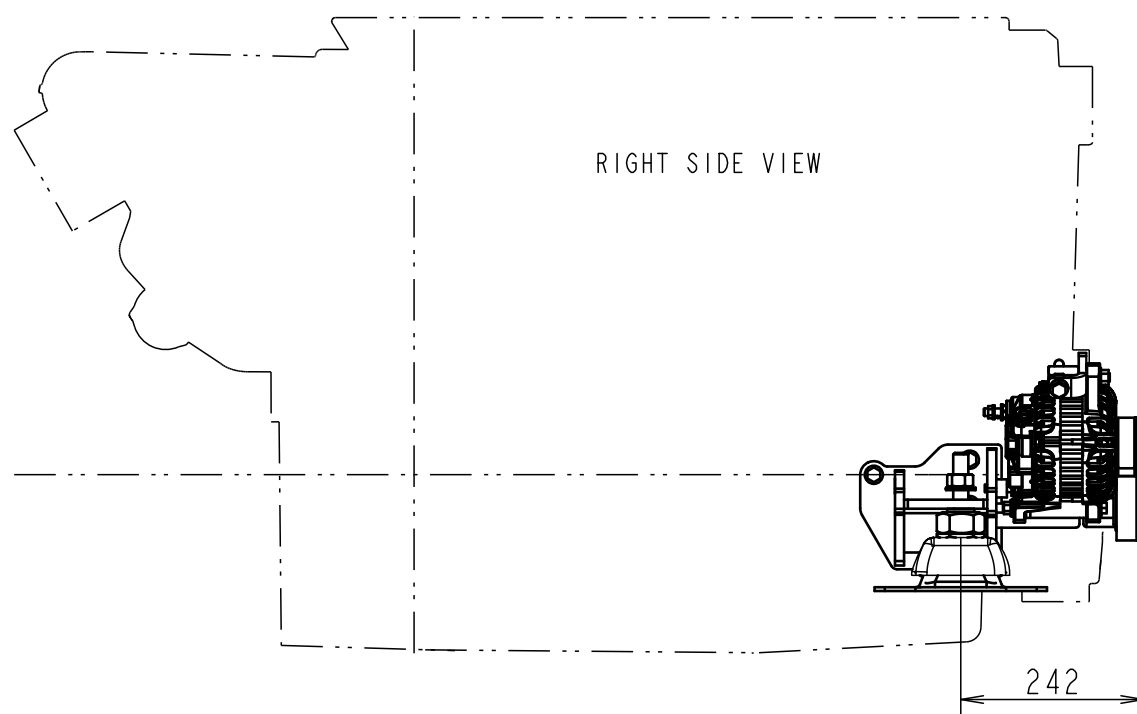
ENCLOSURE

TOTAL TOLERANCE

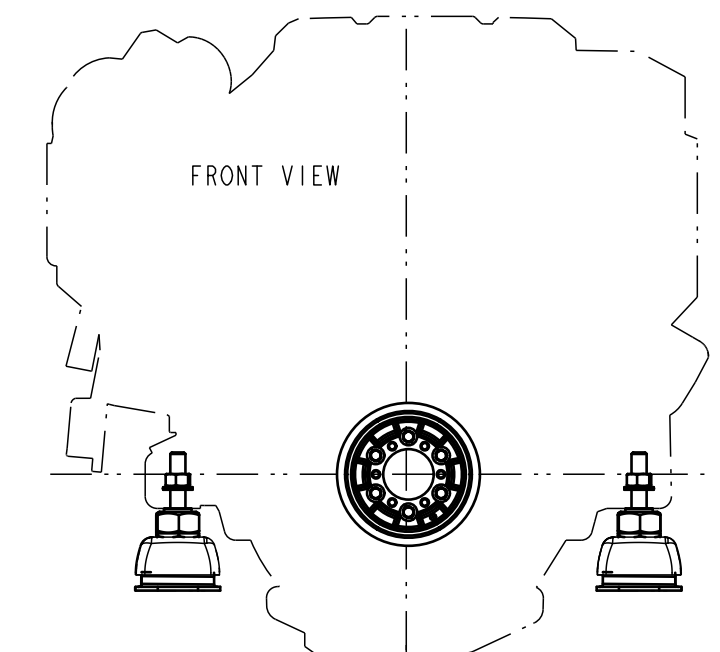
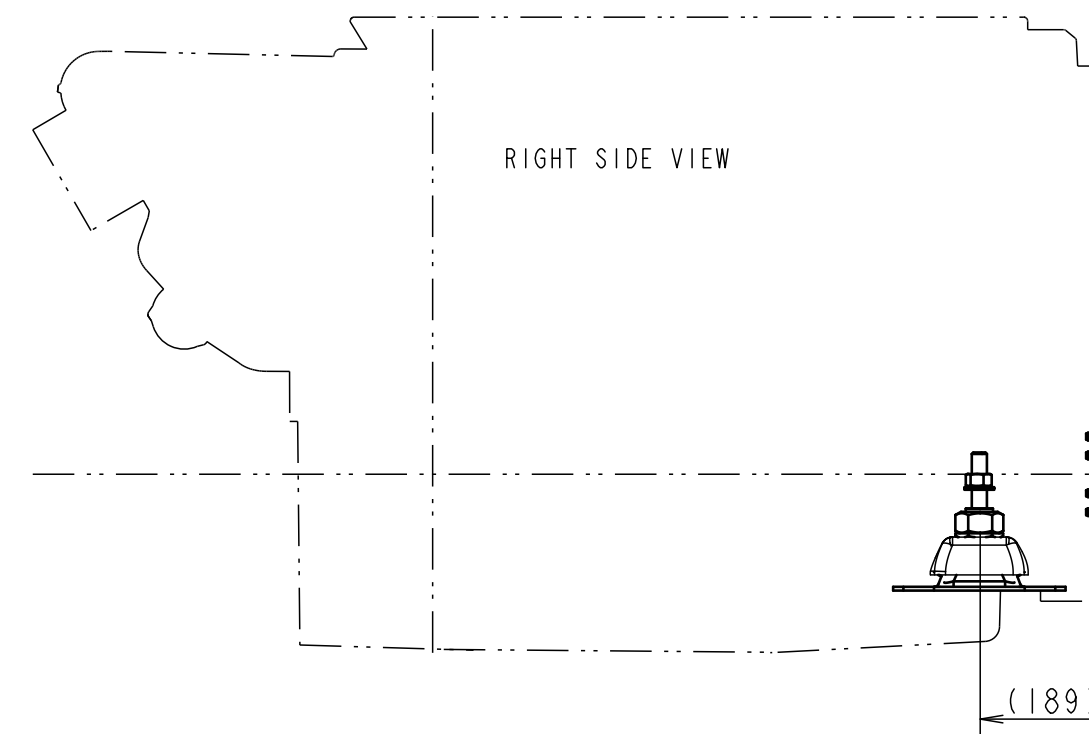
C A R E E R



SCALE 1:5 DETAIL OF PTO PULLEY



SECONDARY ALTERNATOR



PTO PULLEY

NOTE:
1. REFER TO B2-63100-0010 DRAWING FOR DETAIL OF ENGINE.

量産用
FOR MASS PRODUCTION

MANAGER

SEC. MANAGER		MODEL	6LF 485	6LF 530	6LF 550			SCALE	1:10	
CHECKED	SPECIALIST	QTY	1	1	1			MATERIAL		
DESIGNED	DRAWN	DATE: Y.M.D	NAME							
		2021.01.27	6LF APPLICATION							
YANMAR		CODE	B2-63100-0020						DRAW SIZE	A2
YANMAR MARINE INTERNATIONAL B.V.										

3D-CAD

NOTICE

GEOMETRICAL TOLERANCE	
KIND OF TOLERANCE	SYMBOL
STRAIGHTNESS TOLERANCE	—
CIRCULARITY TOLERANCE	○
PROFILE OF LINE TOLERANCE	⌒
FLATNESS TOLERANCE	∥
CYLINDRICITY TOLERANCE	∅
PERPENDICULARITY TOLERANCE	⊥
PARALLELISM TOLERANCE	∥
PERPENDICULARITY TOLERANCE	⊥
ANGULARITY TOLERANCE	∠
POSITIONAL TOLERANCE	⊕
COINCIDENCE TOLERANCE	◎
SYMMETRY TOLERANCE	≡
STRAIGHT RUN-OUT TOLERANCE	↗
TOTAL RUN-OUT TOLERANCE	↘