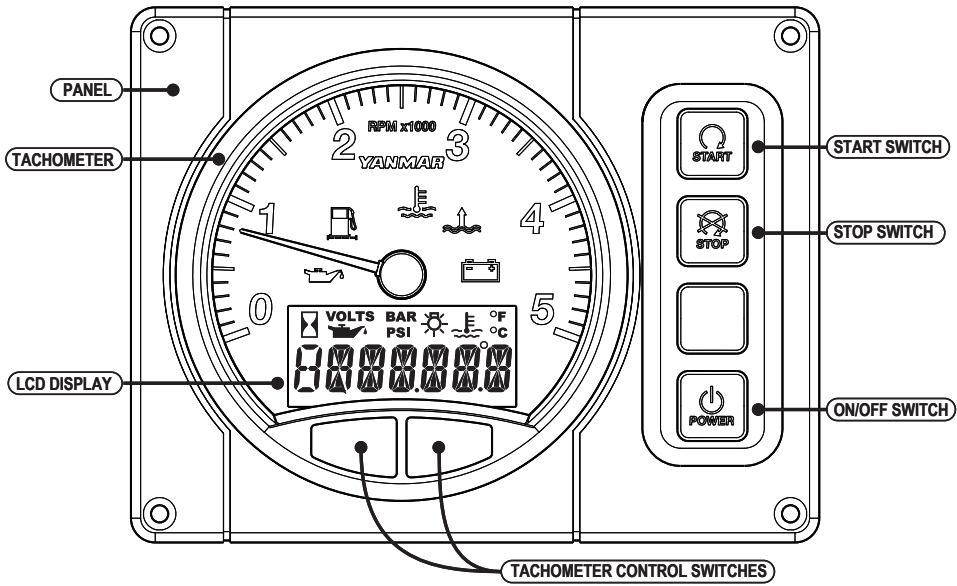







PANEL ASSEMBLY
B25 & C35

PANEL ASSEMBLY B25 164100-30112
PANEL ASSEMBLY C35 164100-30312



SWITCH FUNCTION		ACTION	BATTERY	ACCESSORY	STARTER RELAY	STOP RELAY
   	START ENGINE	MOMENTARY ON	●—————●			
	STOP ENGINE	MOMENTARY ON	●—————●			
NO FUNCTION						
	PANEL POWER	ON	●—————●			
	ON-OFF	OFF	●			

WIRE HARNESS

1

1	BLACK	BOAT GROUND
2	RED	BATTERY
3	PURPLE / WHITE	IGNITION
4	YELLOW	CAN HIGH
5	GREEN	CAN LOW
6	BLUE / WHITE	FUEL SENDER
7	DARK / BLUE	BACKLIGHTING OUT
16	TAN / BLUE	BUZZER OUTPUT

2

1	RED	BATTERY
2	DARK / BLUE	BACKLIGHTING
3	PURPLE	FUSE IGNITION
4	WHITE	START
5	WHITE / BROWN	STOP
8	BLACK	BOAT GROUND

3 & 4

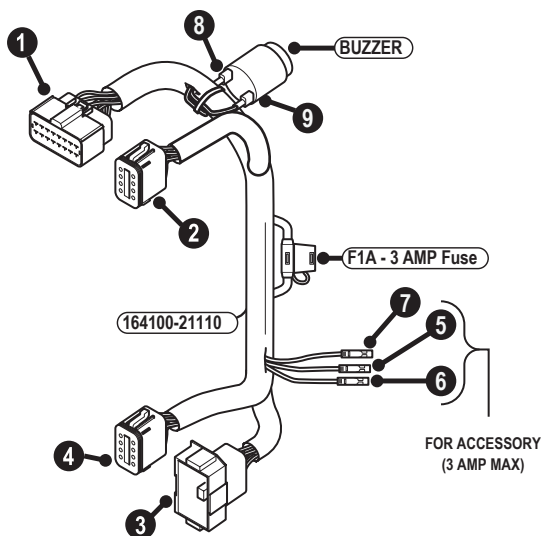
1	RED	BATTERY
2	DARK / PURPLE	E STOP
4	PURPLE	PANEL POWER DIODE
5	WHITE / BROWN	STOP
6	BLACK	CAN GROUND
7	WHITE	START
8	BLACK	BOAT GROUND
9	RED	CAN POWER
10	YELLOW	CAN HIGH
11	GREEN	CAN LOW
12	BLACK	ENGINE EARTH

5

PURPLE	ACCESSORY
--------	-----------

6

BLACK	BOAT GROUND
-------	-------------



BUZZER

F1A - 3 AMP Fuse

164100-21110

FOR ACCESSORY
(3 AMP MAX)

7

BLUE / WHITE	FUEL TANK
--------------	-----------

8

1 TAN / BLUE	BUZZER OUTPUT
--------------	---------------

9

2 PURPLE / WHITE	PANEL POWER
------------------	-------------

F1A - 3 AMP FUSE

A PURPLE / WHITE	PANEL POWER
B PURPLE	ACCESSORY

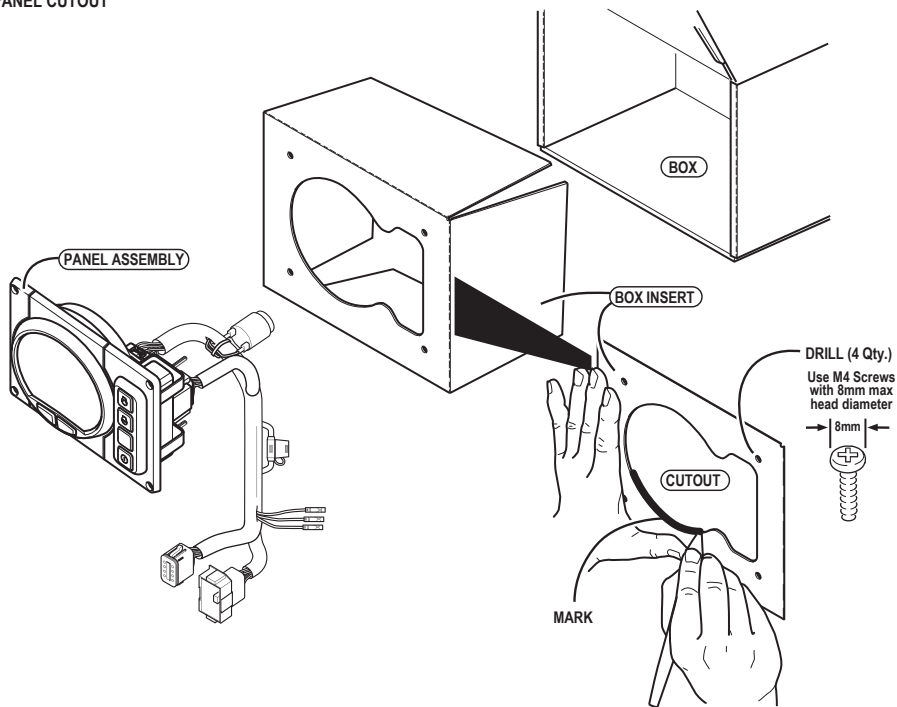
INDICATOR FUNCTION

When a sensor detects a problem during operation, the indicator inside the tachometer will light and an alarm will sound. Under normal operating conditions, the indicators are off.

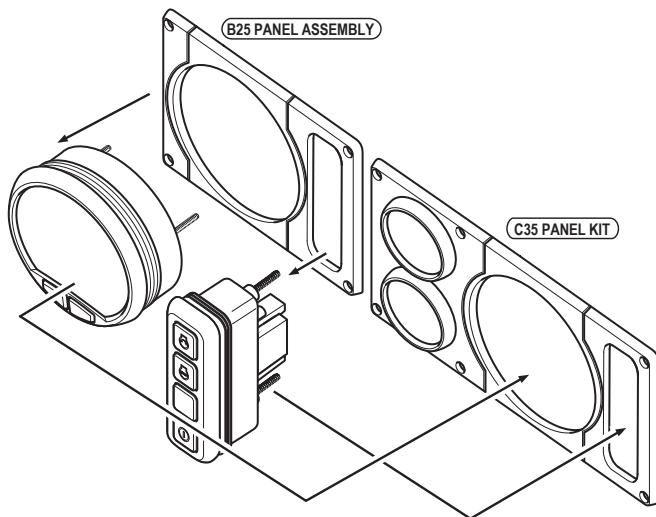
	<p>Engine Oil Low Pressure Indicator and Alarm</p> <p>When the engine oil pressure falls below normal, the oil pressure sensor will send a signal to the indicator, causing it to light and the alarm to sound. Stop operation immediately to avoid damage to the engine. Check the oil level and troubleshoot the lubrication system.</p>
	<p>Water in Fuel Filter Indicator and Alarm.</p> <p>When the water level in the fuel filter/water separator becomes too high, the indicator will light and the alarm will sound. Drain the water from the fuel filter/water separator.</p>
	<p>Coolant High Temperature Indicator and Alarm</p> <p>When coolant temperature reaches the maximum allowable temperature (95°C [203°F] or higher), the indicator will light and the alarm will sound. Continuing operation at temperatures exceeding the maximum limit will result in damage and seizure. Check the load and troubleshoot the cooling system.</p>
	<p>Water in Sail Drive Seal Indicator and Alarm</p> <p>When water is detected between the seals of the sail drive, the indicator will light and the alarm will sound.</p>
	<p>Battery Low Charge Indicator</p> <p>When the alternator output is too low, the indicator will light. When charging begins, the indicator will turn off.</p>

PANEL ASSEMBLY

PANEL CUTOUT

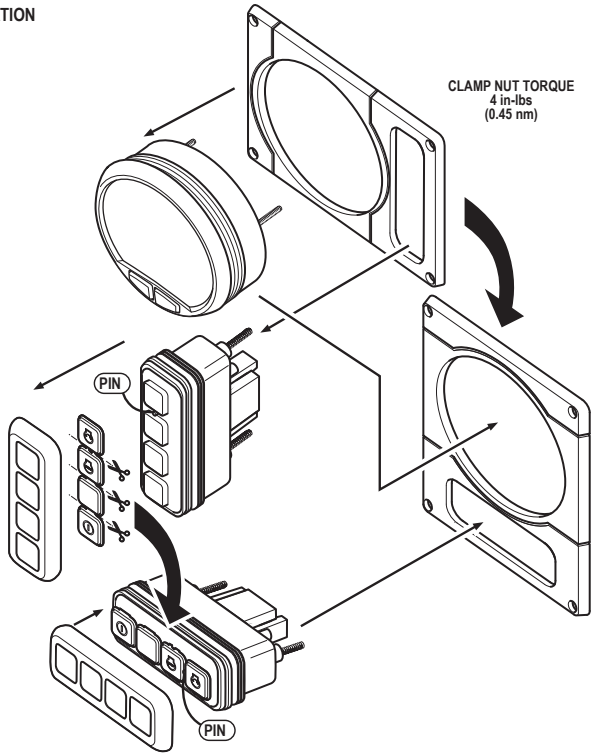
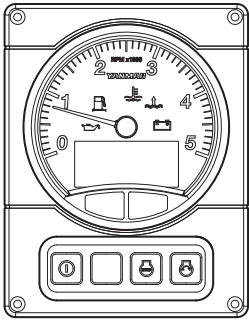


OPTIONAL - B25 TO C35 PANEL CONVERSION



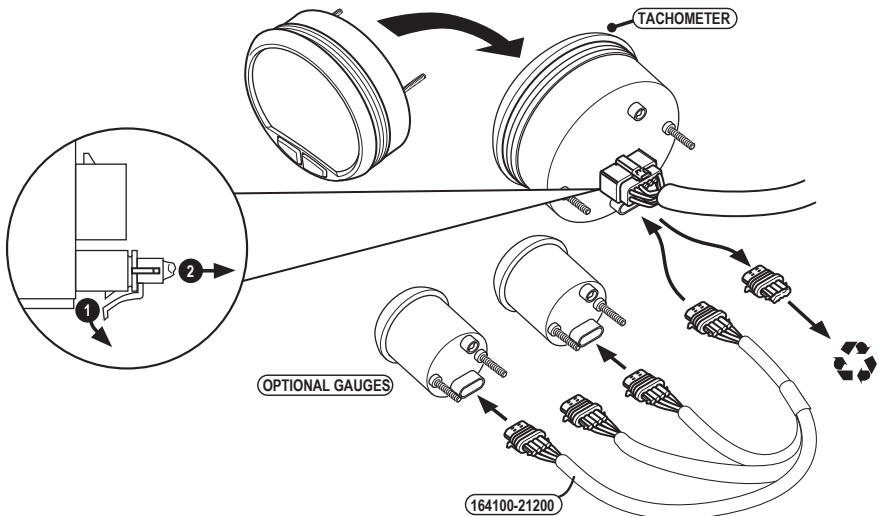
PANEL ASSEMBLY

OPTIONAL - VERTICAL PANEL INSTALLATION



CLAMP NUT TORQUE
4 in-lbs
(0.45 nm)

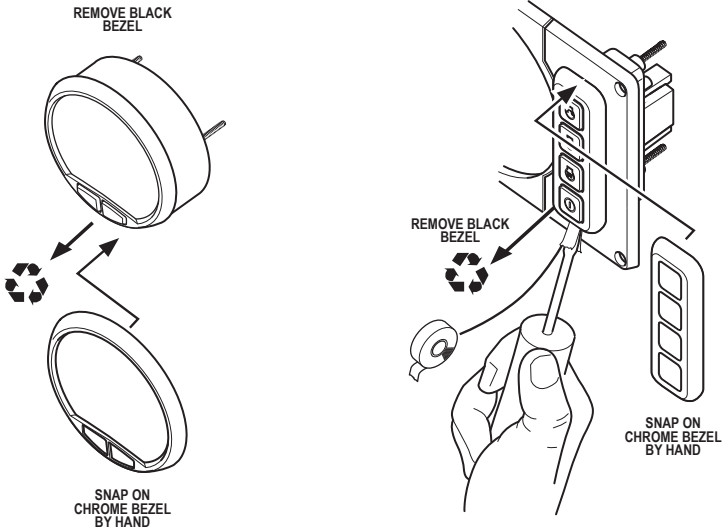
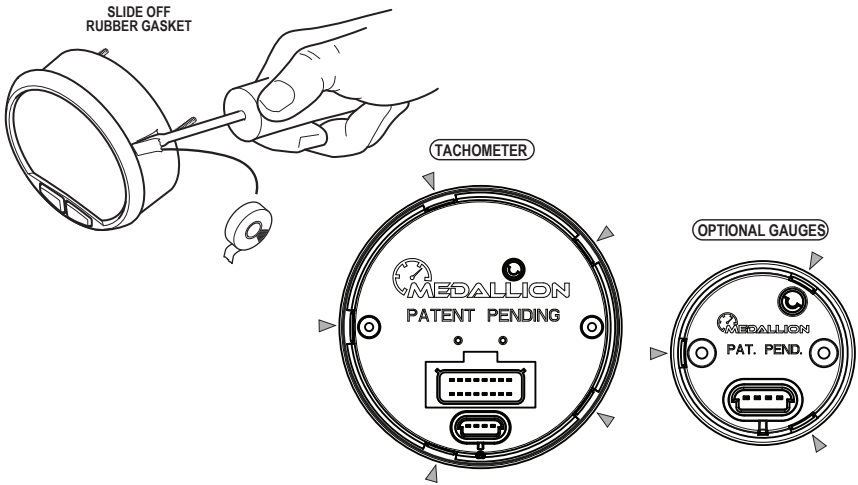
OPTIONAL - GAUGE INSTALLATION

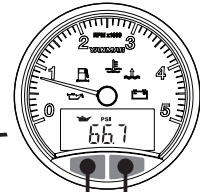


OPTIONAL GAUGES
Fuel Gauge - 164100-53220
Oil Pressure Gauge - 164100-53210
Water Temperature Gauge - 164100-53200

164100-21200

OPTIONAL - CHROME BEZEL INSTALLATION





Scroll

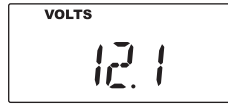
ENGINE HOUR



ALARMS



BATTERY VOLTAGE



Press and hold
("WAIT" will display in the LCD
while DTC is processed)

OR

Number of DTC

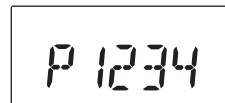


Scroll



Scroll

DTC CODE LIST

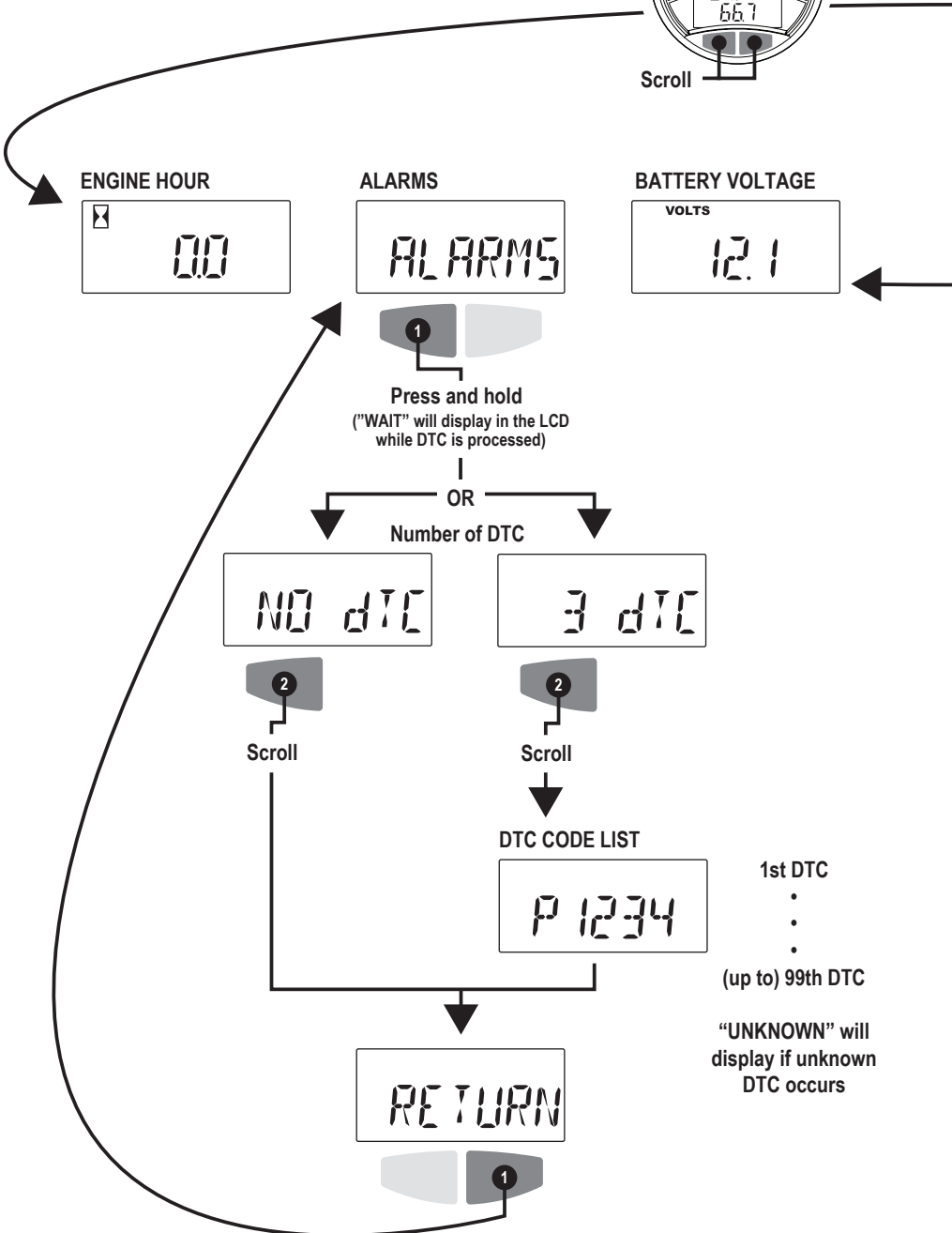


1st DTC

⋮

(up to) 99th DTC

"UNKNOWN" will
display if unknown
DTC occurs



OIL PRESSURE



Metric



English

BACKLIGHTING
BRIGHTNESS



Press and hold
(display will blink when ready)

(blinking)

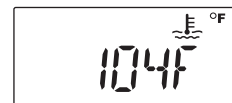


Scroll
100, 80, 60, 40, 20, 0
(after 3 second delay
value will be set)

COOLANT
TEMPERATURE

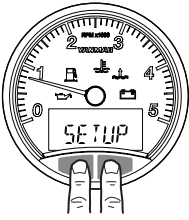


Metric

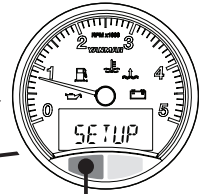


English

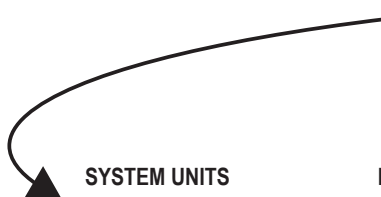
SETUP SCREEN ACCESS AND CONTROL



Press and hold
BOTH buttons
until setup appears



Scroll



SYSTEM UNITS



Select

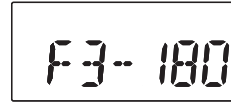


Scroll
Metric
English

FUEL

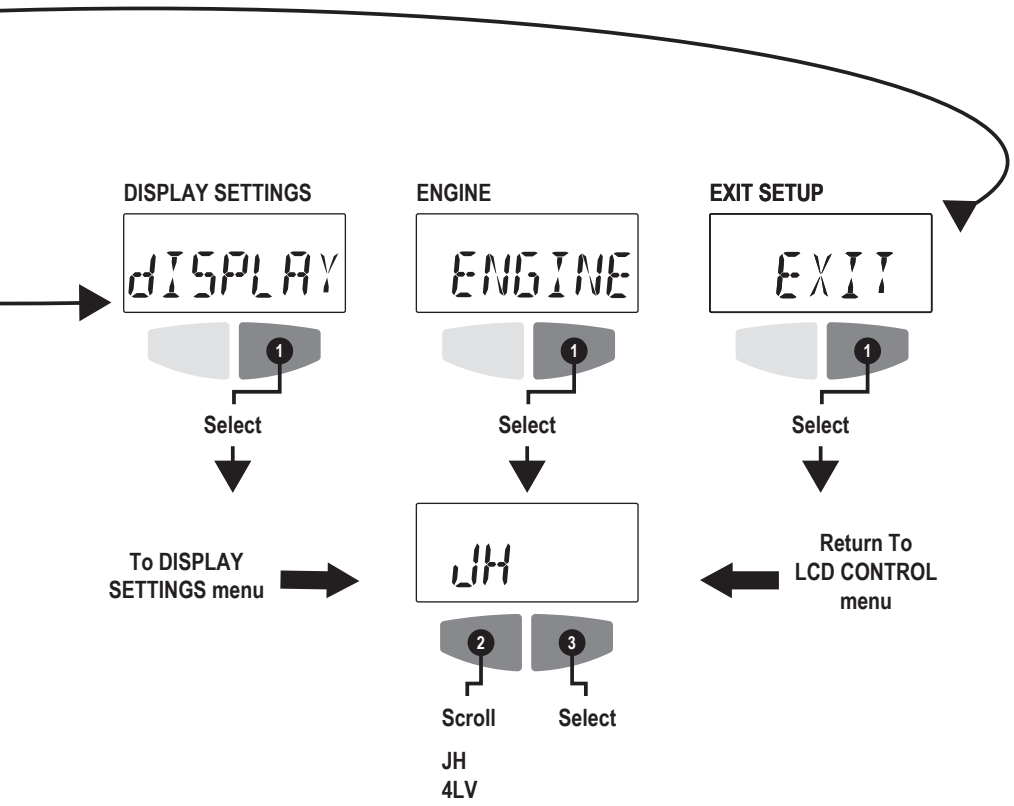


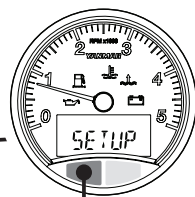
Select



Scroll
F3-180
F240-3
F70-3
CAN

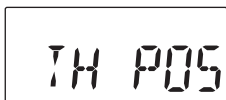




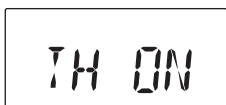


Scroll

THROTTLE POSITION



Select



On/Off

Select

ENGINE LOAD



Select



On/Off

Select

FUEL RATE



Select



On/Off

Select

RETURN TO
PREVIOUS MENU

RETURN

Return To SETUP SCREEN
ACCESS AND CONTROL menu

AIR PRESSURE

AIR PRS



Select

AP ON



On/Off Select

FUEL TEMPERATURE

FL TMP



Select

FT ON



On/Off Select

AIR TEMPERATURE

AIR TMP



Select

AT ON



On/Off Select

Air Temperature is available
ONLY with the 4LV engine

With the JH engine,
the value displayed will be "--"

YANMAR[®]