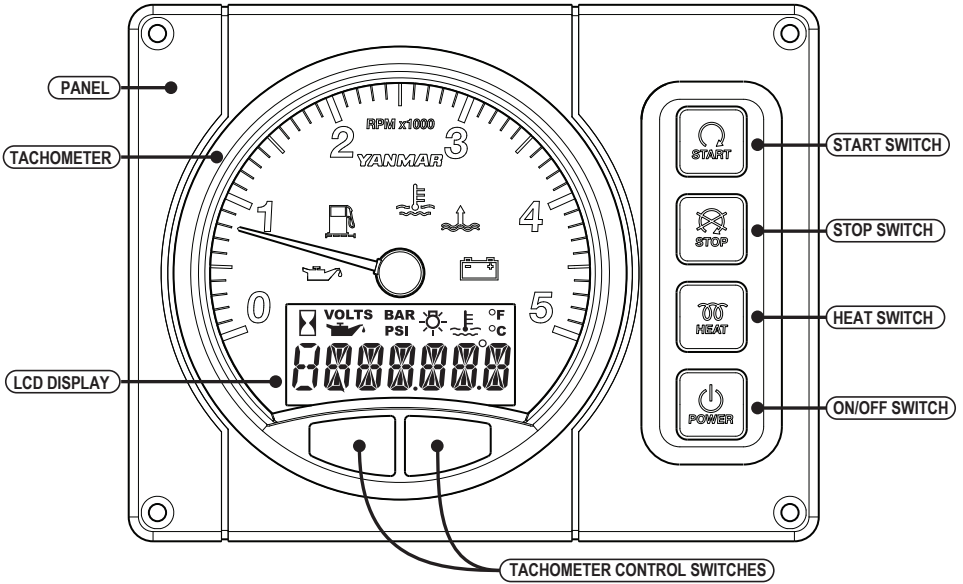






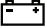
PANEL ASSEMBLY



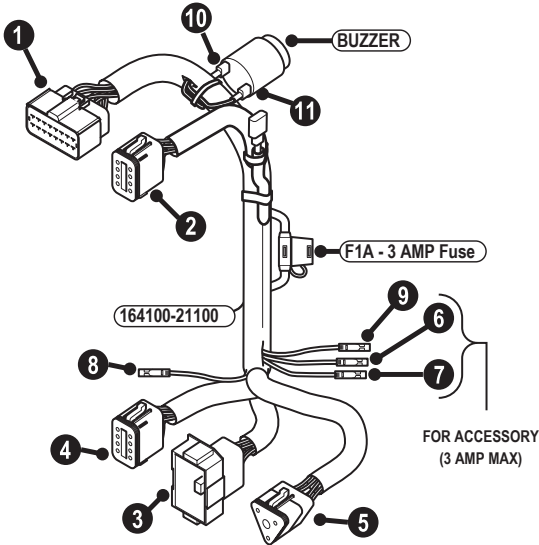
SWITCH FUNCTION	ACTION	BATTERY	ACCESSORY	GLOW RELAY	STARTER RELAY	STOP RELAY
START ENGINE	MOMENTARY ON	●—————		●—————	●—————	
STOP ENGINE	MOMENTARY ON	●—————				●—————
HEAT ON-OFF	MOMENTARY ON	●—————		●—————		
PANEL POWER ON-OFF	ON	●—————	●—————			
	OFF	●				

INDICATOR FUNCTION

When a sensor detects a problem during operation, the indicator inside the tachometer will light and an alarm will sound. Under normal operating conditions, the indicators are off.

	<p>Engine Oil Low Pressure Indicator and Alarm</p> <p>When the engine oil pressure falls below normal, the oil pressure sensor will send a signal to the indicator, causing it to light and the alarm to sound. Stop operation immediately to avoid damage to the engine. Check the oil level and troubleshoot the lubrication system.</p>
	<p>Water in Fuel Filter Indicator and Alarm (not on all engine models).</p> <p>When the water level in the fuel filter/water separator becomes too high, the indicator will light and the alarm will sound. Drain the water from the fuel filter/water separator.</p>
	<p>Coolant High Temperature Indicator and Alarm</p> <p>When coolant temperature reaches the maximum allowable temperature (95°C [203°F] or higher), the indicator will light and the alarm will sound. Continuing operation at temperatures exceeding the maximum limit will result in damage and seizure. Check the load and troubleshoot the cooling system.</p>
	<p>Water in Sail Drive Seal Indicator and Alarm</p> <p>When water is detected between the seals of the sail drive, the indicator will light and the alarm will sound.</p>
	<p>Battery Low Charge Indicator</p> <p>When the alternator output is too low, the indicator will light. When charging begins, the indicator will turn off.</p>

WIRE HARNESS



1	
1	BLACK BOAT GROUND
2	RED BATTERY
3	PURPLE ACCESSORY
6	BLUE WHITE FUEL TANK
7	DARK BLUE BACKLIGHTING IN
8	WHITE / BLACK WATER TEMP SENSOR
9	YELLOW / BLACK OIL PSI SENSOR
10	GREEN WATER IN FUEL
11	YELLOW / WHITE LOW PSI SWITCH
12	WHITE / BLUE HIGH TEMP SWITCH
13	YELLOW / GREEN SAIL DRIVE SEAL
14	BLUE / BLACK CHARGE
15	ORANGE TACH INPUT
16	TAN / BLUE BUZZER OUTPUT

2	
1	RED BATTERY
2	DARK BLUE BACKLIGHTING IN
3	PURPLE / WHITE PANEL POWER
4	WHITE START
5	WHITE / BROWN STOP
6	LIGHT BLUE GLOW
8	BLACK BOAT GROUND

3	
4	WHITE / BLACK WATER TEMP SENSOR
5	YELLOW / BLACK OIL PSI SENSOR
8	GREEN WATER IN FUEL

4	
1	YELLOW / WHITE LOW PSI SWITCH
2	WHITE / BLUE HIGH TEMP SWITCH
4	BLACK BOAT GROUND
5	YELLOW / GREEN SAIL DRIVE SEAL
6	ORANGE TACH INPUT
7	BLUE / BLACK CHARGE
8	PURPLE / WHITE PANEL POWER

5	
A	WHITE START
B	RED BATTERY
C	LIGHT BLUE GLOW

6	
PURPLE	ACCESSORY

7	
BLACK	BOAT GROUND

8	
WHITE / BROWN	STOP

9	
BLUE / WHITE	FUEL TANK

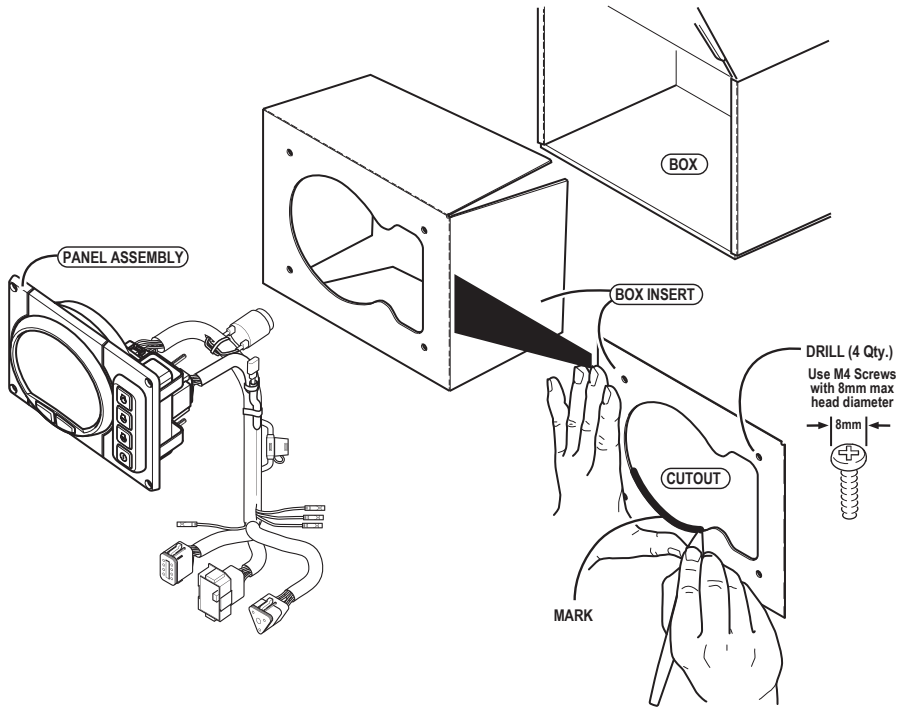
10	
1	TAN / BLUE BUZZER OUTPUT

11	
2	PURPLE / WHITE PANEL POWER

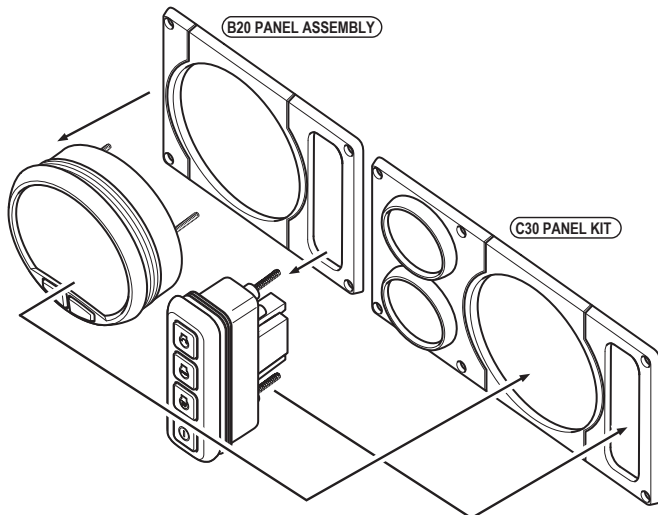
F1A - 3 AMP FUSE	
A	PURPLE / WHITE PANEL POWER
B	PURPLE ACCESSORY

PANEL ASSEMBLY

PANEL CUTOUT

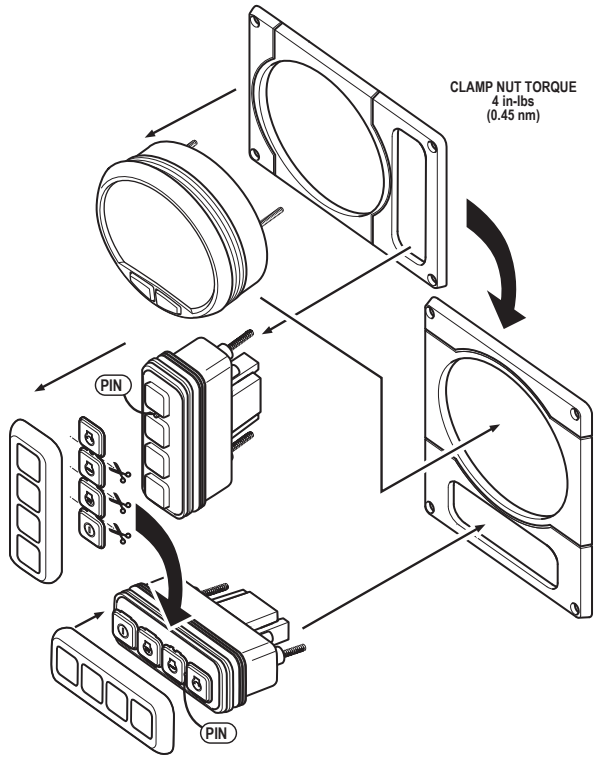
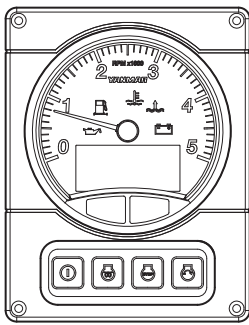


OPTIONAL - B20 TO C30 PANEL CONVERSION

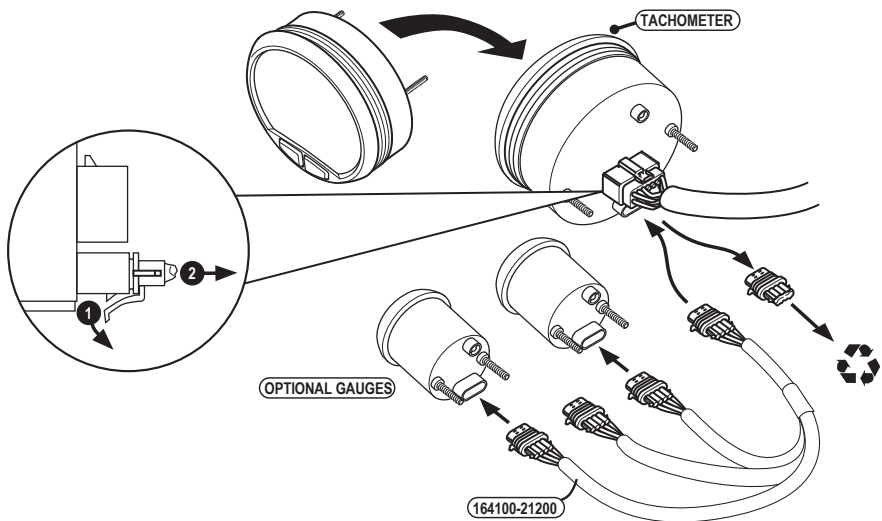


PANEL ASSEMBLY

OPTIONAL - VERTICAL PANEL INSTALLATION

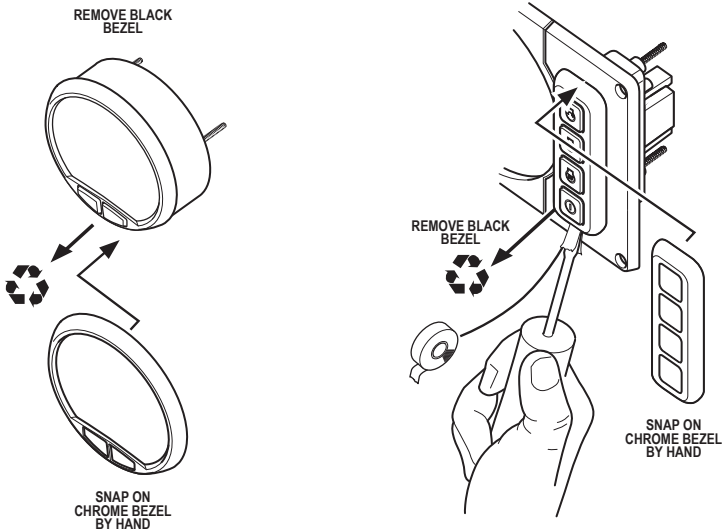
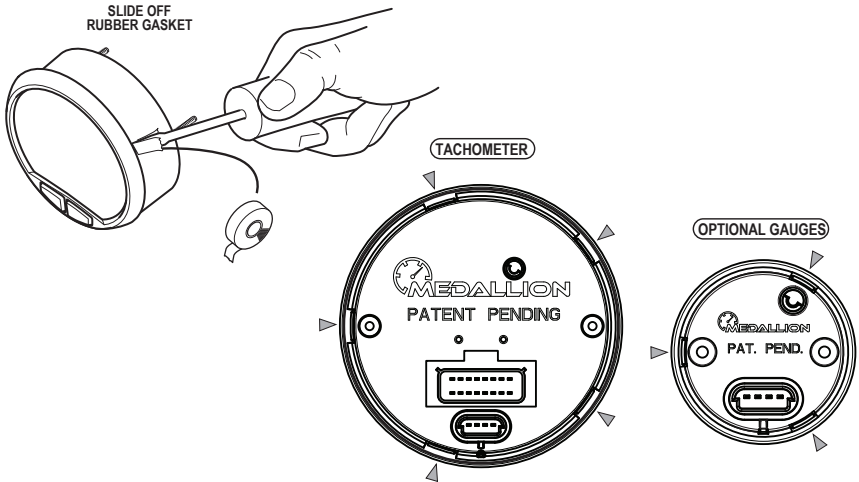


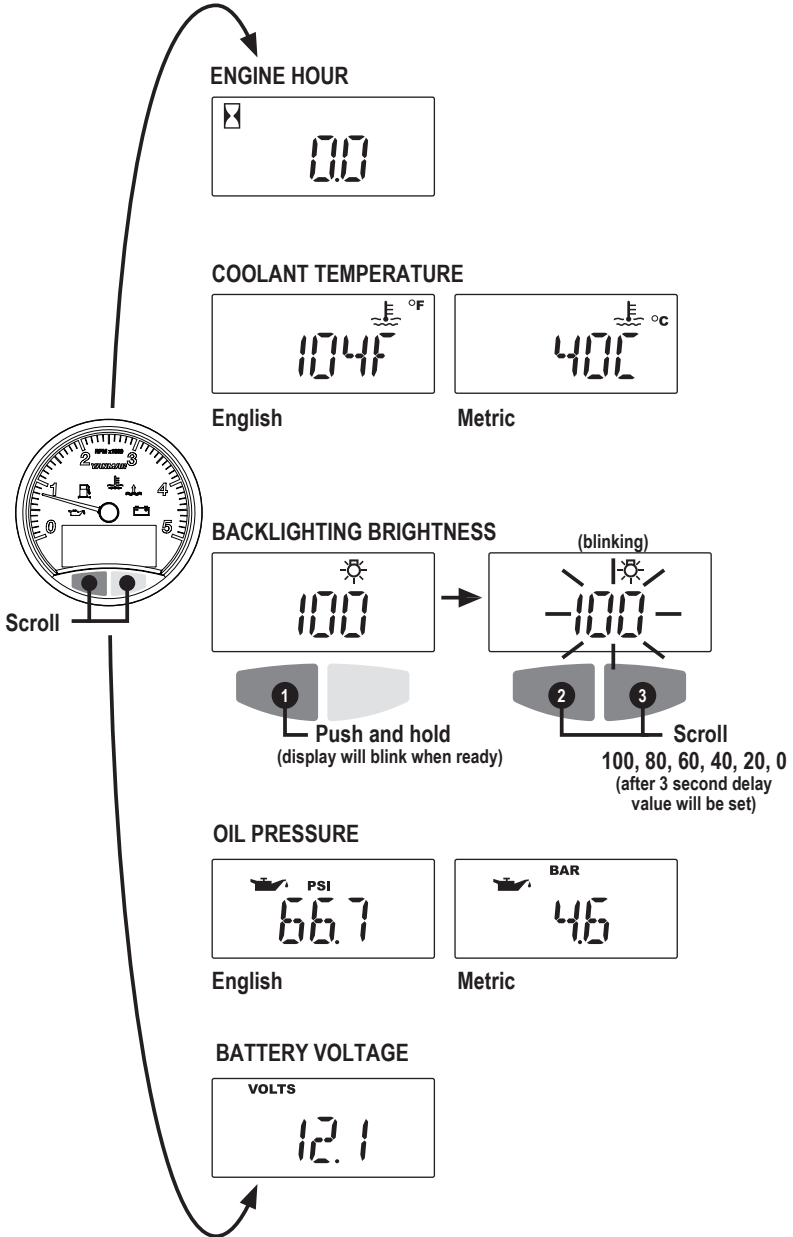
OPTIONAL - GAUGE INSTALLATION



PANEL ASSEMBLY

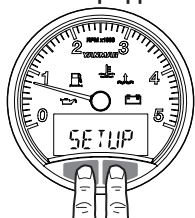
OPTIONAL - CHROME BEZEL INSTALLATION



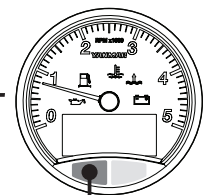
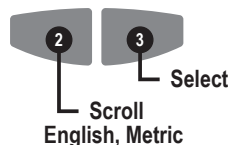
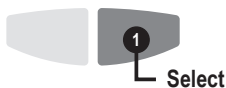


SETUP SCREEN ACCESS AND CONTROL

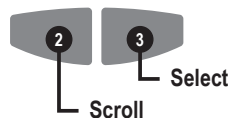
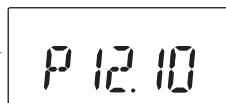
Press and hold BOTH buttons until setup appears



SYSTEM UNITS



ENGINE TYPE SELECT



EXIT SETUP



Return To Previous Page
LCD Control

P 9.2, P 10.29, P 11.08, P 12.10,
P 97, P 127

ENGINE MODEL	FACTORY DEFAULT	PULSE SETTING
2YM15 with 100mm Crank Pulley		9.2
2YM15 with 100mm Crank Pulley		10.29
3YM27A		11.08
YM/JH5/JH4 with 134mm Crank Pulley	0	12.10
1GM10		97
4JH3-DTE		127

*164100-30100 & 164100-30101
Factory Default P10.29