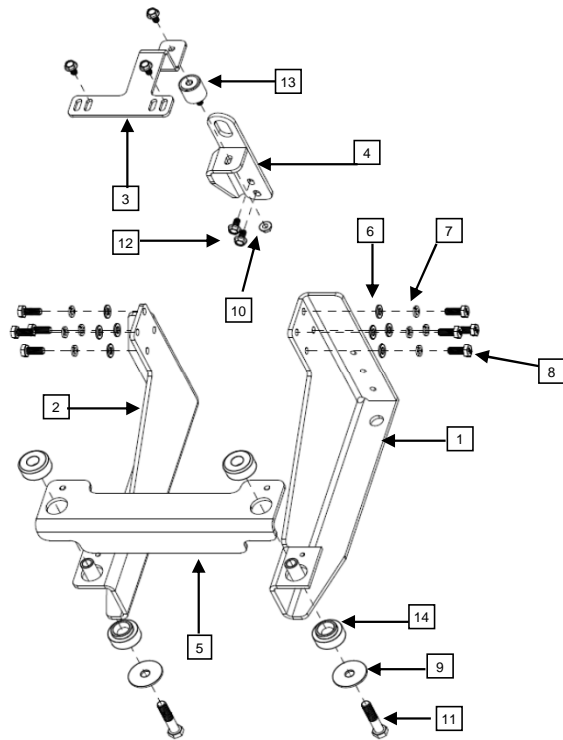




YANMAR CO., LTD.
YANMAR AMERICA CORP.

| Item | Lev. | O | Part No. | Description | Quantity | Remarks |
|------|------|---|--------------|---|----------|---------|
| 1 | - | | 129689-44080 | Leg, Right Front | 1 | |
| 2 | - | | 129689-44090 | Leg, Left Front | 1 | |
| 3 | - | | 129689-44100 | Mount, Top | 1 | |
| 4 | - | | 129689-44941 | Mount, Upper | 1 | |
| 5 | - | | 129689-44930 | Plate, Rad Bottom Brkt | 1 | |
| 6 | - | X | 129689-44310 | Washer, Plain 10mm, (ANSI B18.22.1) | 8 | (A) |
| 7 | - | X | 129689-44320 | Washer, Lock 10mm, (BS 4464) (Helical spring) | 8 | (A) |
| 8 | - | | 129689-44330 | Bolt, M10 X 1.50 - 25 (Flange hex head) | 8 | (A) |
| 9 | - | | 129689-44860 | Washer, Plain 0.500 X 2.00 X 0.125, (ANSI B18.22.1) | 2 | |
| 10 | - | | 129689-44280 | Nut, M8 X 1.25, (Flange, serrated hex head) | 1 | |
| 11 | - | | 129689-44960 | Bolt, 1/2 X 13 - 2 1/2, (Hex), (ANSI B18.22.1) | 2 | |
| 12 | - | | 129689-44290 | Bolt, M8 X 1.25 - 16, (Flange, serrated hex head), Class 90 | 5 | |
| 13 | - | | 129689-44880 | Isolator, 32 X 32, M8 X 1.25 Stud | 1 | |
| 14 | - | | 129689-44890 | Isolator, 46.4mm, 51.21mm, 1/2 X 13 | 2 | |



MODELS

4TNV84T
 4TNV88

Remarks: (A) 26106-100202 is a service part used to replace the bolt, lock washer and washer assembly (items: 6, 7 and 8).



Installation Instructions

Hand tighten all bolts and nuts until assembly is completed, then torque according to specifications in Table 1. The numbers in () represent the item numbers.

1. Using M8 X 1.25 - 16mm bolts (12), fasten the Upper Mount (4) to the front of the cylinder head, replacing the front lifting eye of the engine.
2. Fasten M8 Isolator (13) and Upper Support (3) to Upper Mount using M8 X 1.25 - 16mm bolt (12) and M8 X 1.25 nut (10).
3. Assemble Right Side Bracket (1) and Left Side Bracket (2) to engine mounting pads using Washers (6), Lock Washers (7) and M10 X 1.5 - 25mm bolts (8) provided in the kit.
4. Locate Cross Bracket (5) onto Side Legs using guide pins. Assemble Isolators (14) in large openings at the sides of the Cross Bracket.
5. Install the Radiator Kit (KR9) and refer to Radiator Kit instructions to complete assembly.

NOTE: Comply with torque standards in the table to avoid unexpected damage during installation or in the future.

TABLE 1:

| Diameter x Pitch | Kgf-m | Foot-lbf | N-m |
|------------------|-----------|-------------|-------------|
| M8 x 1.25 | 1.5 ~ 2.9 | 10.6 ~ 20.9 | 14.4 ~ 28.3 |
| M10 x 1.50 | 4.5 ~ 5.5 | 32.5 ~ 39.8 | 44.0 ~ 54.0 |