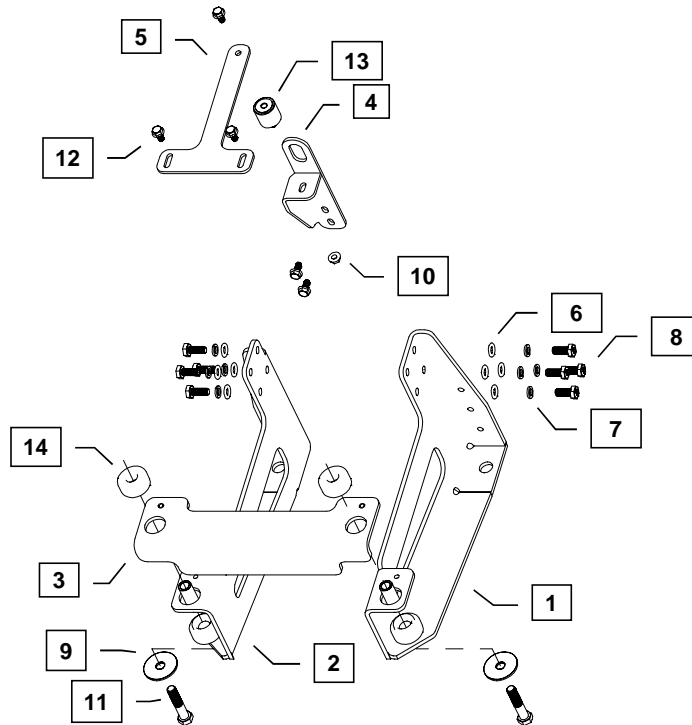




YANMAR CO., LTD.
YANMAR AMERICA CORP.

Item	Lev.	O	Part No.	Description	Quantity	Remarks
1	-		129689-44910	Bracket, Left Side	1	
2	-		129689-44920	Bracket, Right Side	1	
3	-		129689-44930	Plate, Rad Bottom Brkt	1	
4	-		129689-44941	Mount, Upper	1	
5	-		129689-44950	Support, Upper	1	
6	-	X	129689-44310	Washer, Plain 10mm, (ANSI B18.22.1)	8	(A)
7	-	X	129689-44320	Washer, Lock 10mm, (BS 4464) (Helical spring)	8	(A)
8	-		129689-44330	Bolt, M10 X 1.50 - 25 (Flange hex head)	8	(A)
9	-		129689-44860	Washer, Plain 0.500 X 2.00 X 0.125, (ANSI B18.22.1)	2	
10	-		129689-44280	Nut, M8 X 1.25, (Flange, serrated hex head)	1	
11	-		129689-44960	Bolt, 1/2 X 13 - 2 1/2, (Hex), (ANSI B18.22.1)	2	
12	-		129689-44290	Bolt, M8 X 1.25 - 16, (Flange, serrated hex head), Class 90	5	
13	-		129689-44880	Isolator, 32 X 32, M8 X 1.25 Stud	1	
14	-		129689-44890	Isolator, 46.4mm, 51.21mm, 1/2 X 13	2	



MODELS

3TNV84T
3TNV88
4TNV84T
4TNV88

Remarks: (A) 26106-100202 is a service part used to replace the bolt, lock washer and washer assembly (items: 6, 7 and 8).



Installation Instructions

Hand tighten all bolts and nuts until assembly is completed, then torque according to specifications in Table 1. The numbers in () represent the item numbers.

1. Using M8 xX 1.25 -16mm bolts (12), fasten the Upper Mount (4) to the front of the cylinder head, replacing the front lifting eye of the engine.
2. Fasten M8 Isolator (13) and Upper Support (5) to Upper Mount using M8 X 1.25 - 16mm bolt (12) and M8 X 1.25 nut (10).
3. Assemble Left Side Bracket (1) and Right Side Bracket (2) to engine mounting pads using Washers (6), Lock Washers (7) and M10 X 1.5 - 25mm bolts (8) provided in the kit.
4. Locate Bottom Bracket (3) onto Side Legs using guide pins. Assemble Isolators (14) in large openings at the sides of the Cross Bracket.
5. Install the Radiator Kit and refer to Radiator Kit instructions to complete assembly.

NOTE: Comply with torque standards in the table to avoid unexpected damage during installation or in the future.

TABLE 1:

Diameter x Pitch	Kgf-m	Foot-lbf	N-m
M8 x 1.25	1.5 ~ 2.9	10.6 ~ 20.9	14.4 ~ 28.3
M10 x 1.50	4.5 ~ 5.5	32.5 ~ 39.8	44.0 ~ 54.0
M12 x 1.75	8.0 ~ 10.0	57.8 ~ 72.3	78.4 ~ 98.0